

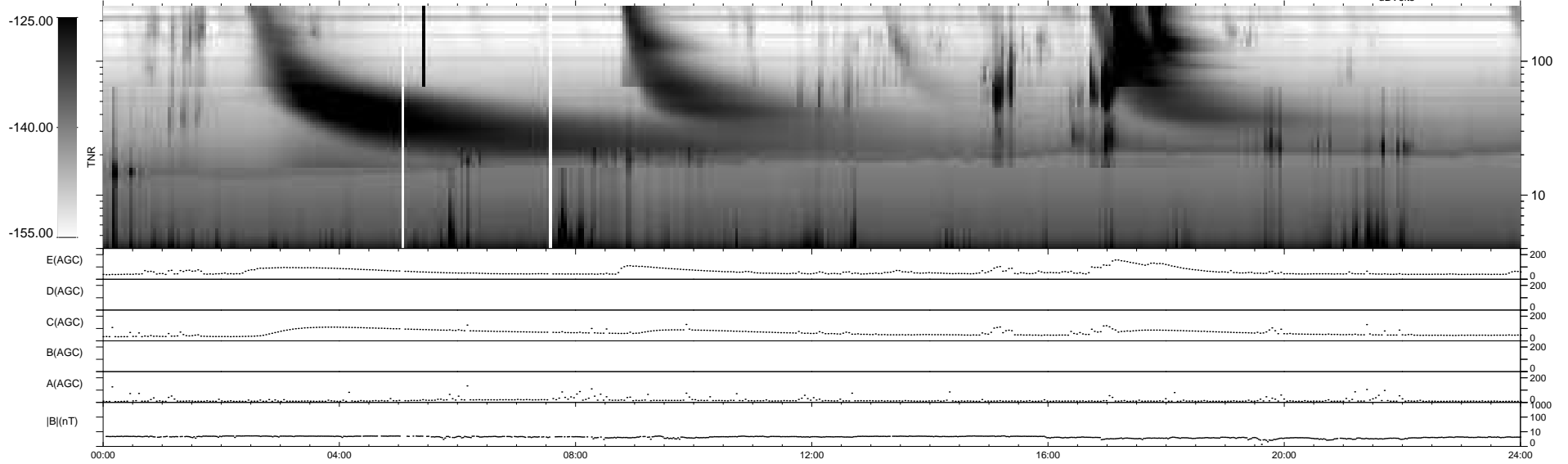
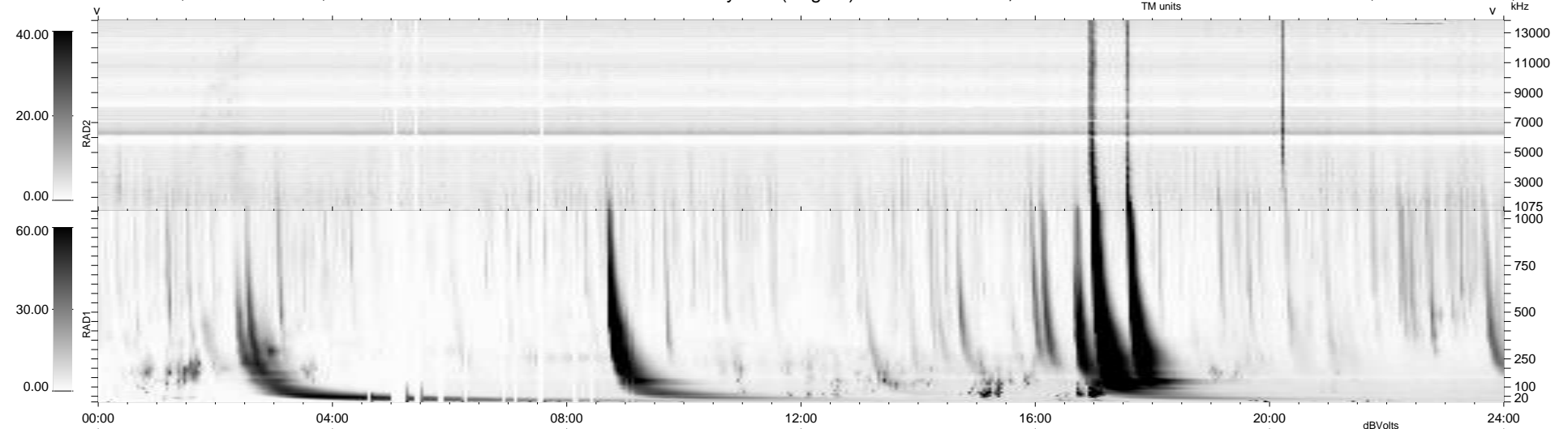
40 bad + 899 good MF/939MF projected (95%) - 0 missing MFs  
 Avg interval = 180 secs  
 Re = 260.48 (256.82, -39.08, 19.07 GSE)

windlib 2.0b

LZ version = v01

### WIND/WAVES Summary Plot (Page 1) for 22-OCT-2014, DOY = 295

DAILY 2014-11-05 16:04:56  
 Re = 260.29 (256.16, -42.08, 19.01 GSE)



```

RAD2
Antenna Ey .....
Mode LIN(1) .....
SUM/SEP SEP .....
Toggle OFF .....

RAD1
Antenna Ex .....
Mode LIS(2,4) .....
SUM/SEP SUM .....
Toggle OFF .....

TNR
Antenna ExEy .....
Mode A-32 .....
Sweep ACE .....
  
```