

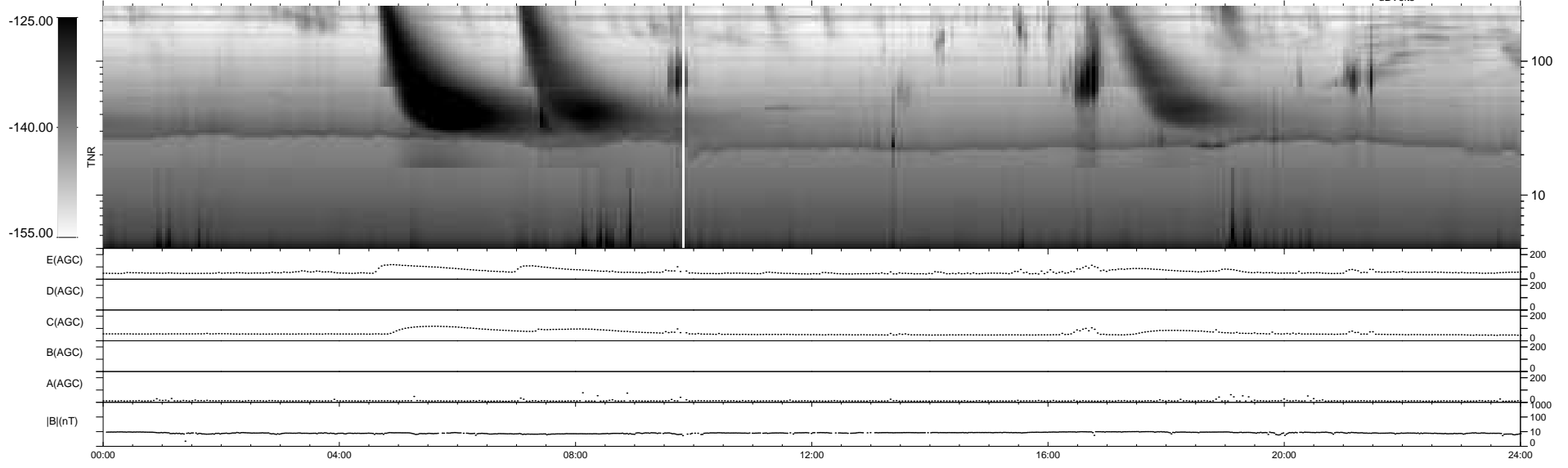
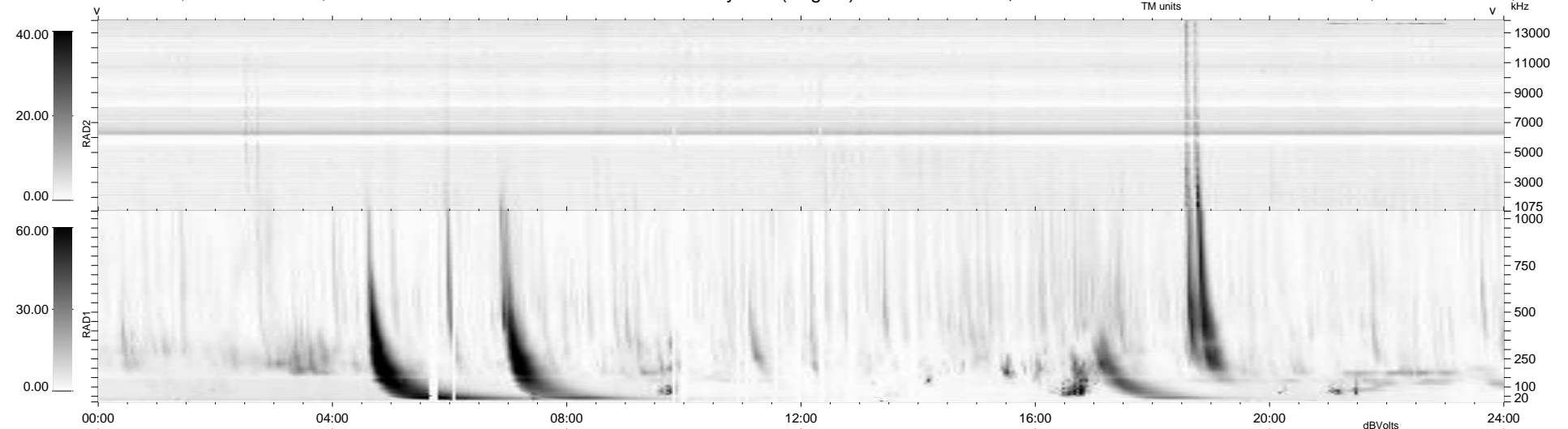
31 bad + 908 good MF/939MF projected (96%) - 0 missing MFs
 Avg interval = 180 secs
 Re = 260.70 (257.92, -32.86, 19.13 GSE)

windlib 2.0b

LZ version = v01

WIND/WAVES Summary Plot (Page 1) for 20-OCT-2014, DOY = 293

DAILY 2014-11-05 16:03:06
 Re = 260.61 (257.41, -35.98, 19.11 GSE)



RAD2
 Antenna Ey
 Mode LIN(1)
 SUM/SEP SEP
 Toggle OFF

RAD1
 Antenna Ex
 Mode LIS(2,4)
 SUM/SEP SUM
 Toggle OFF

TNR
 Antenna ExEy
 Mode A-32
 Sweep ACE