

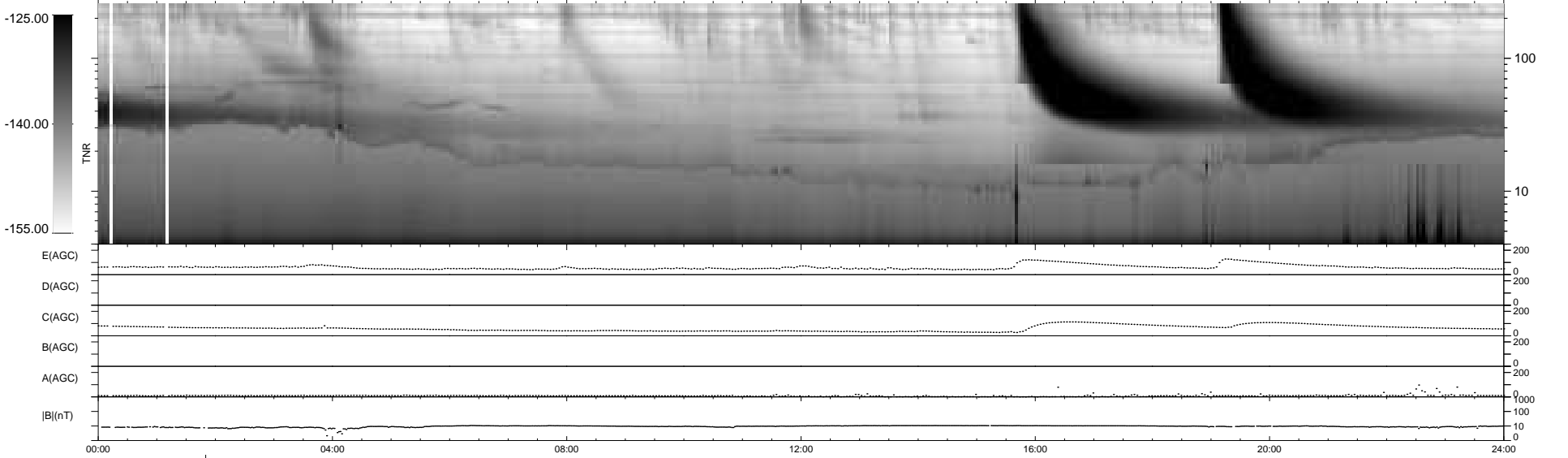
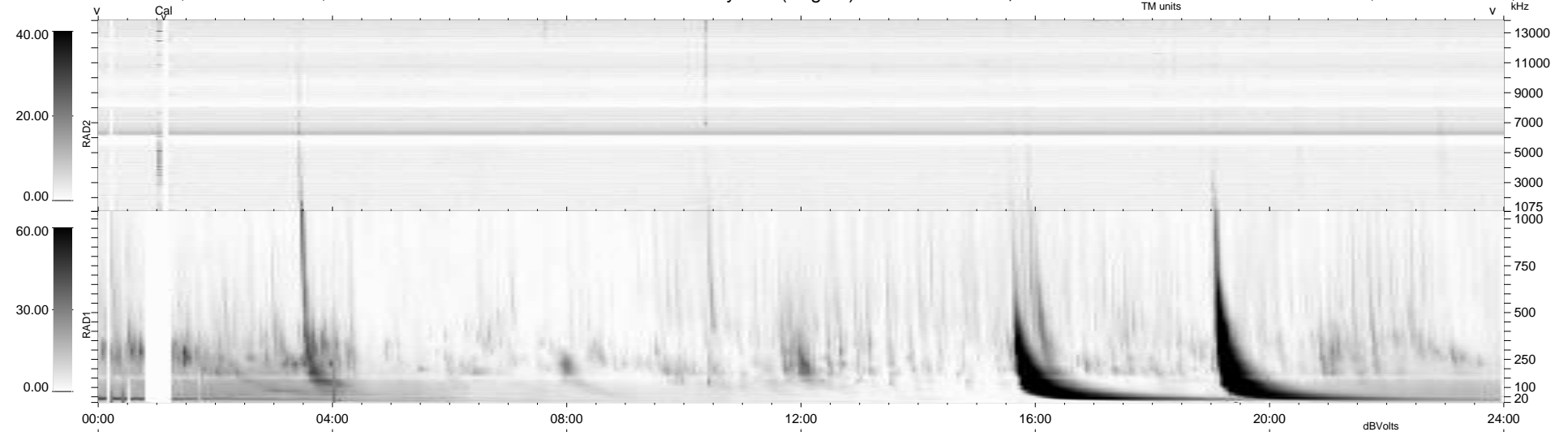
20 bad + 918 good MF/939MF projected (97%) - 1 missing MF
 Avg interval = 180 secs
 Re = 260.76 (258.36, -29.67, 19.13 GSE)

windlib 2.0b

LZ version = v01

WIND/WAVES Summary Plot (Page 1) for 19-OCT-2014, DOY = 292

DAILY 2014-11-05 16:02:10
 Re = 260.70 (257.92, -32.84, 19.13 GSE)



```

RAD2
Antenna Ey .....
Mode LIN(1) .....
SUM/SEP SEP .....
Toggle OFF .....

RAD1
Antenna Ex .....
Mode LIS(2,4) .....
SUM/SEP SUM .....
Toggle OFF .....

TNR
Antenna ExEy .....
Mode A-32 .....
Sweep ACE .....
  
```