

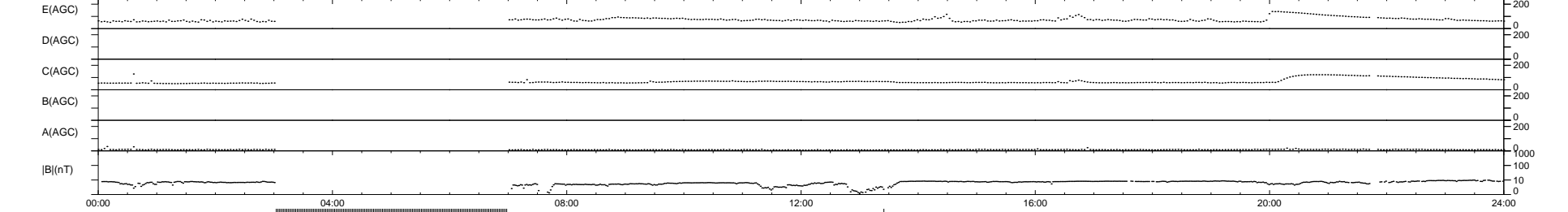
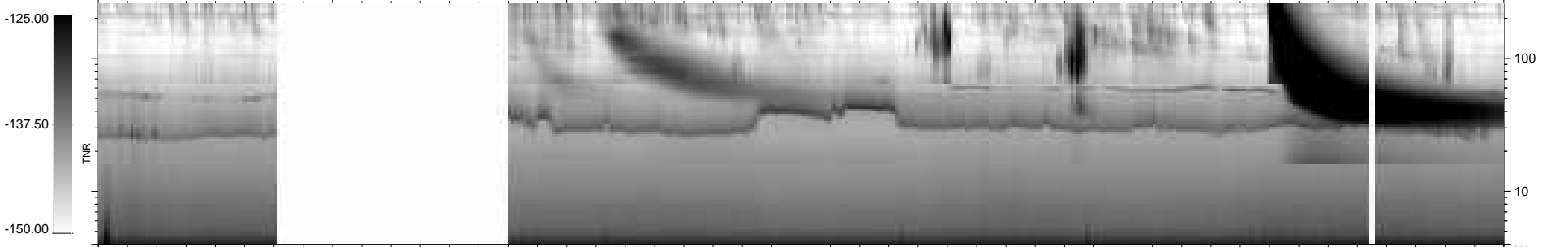
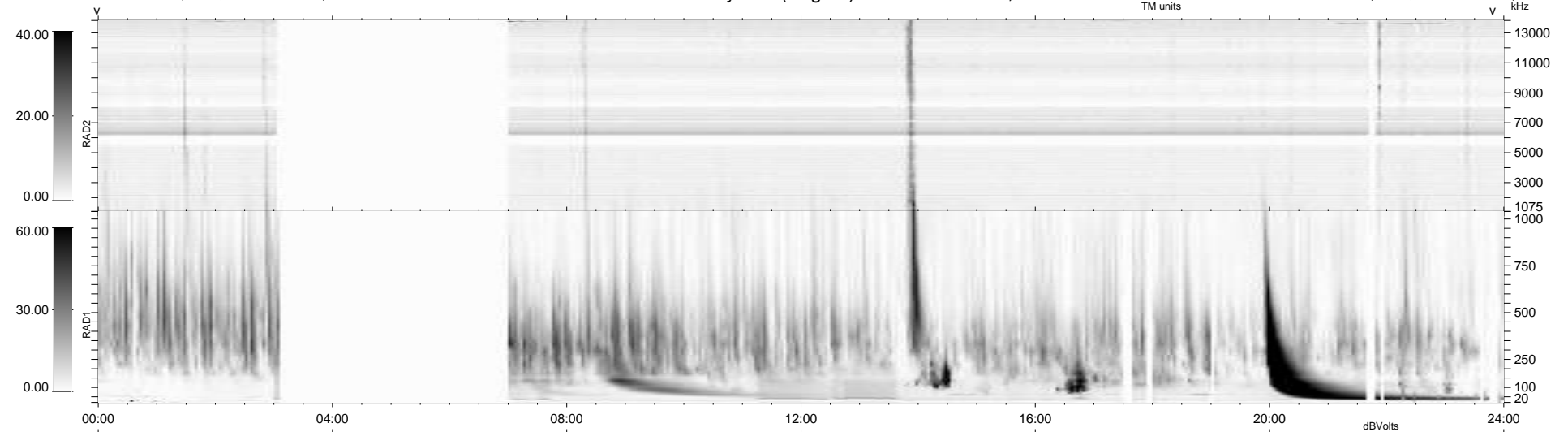
25 bad + 758 good MF/939MF projected (80%) - 156 missing MFs
 Avg interval = 180 secs
 Re = 260.78 (258.73, -26.41, 19.12 GSE)

windlib 2.0b

LZ version = v02

WIND/WAVES Summary Plot (Page 1) for 18-OCT-2014, DOY = 291

DAILY 2014-11-05 16:01:21
 Re = 260.76 (258.36, -29.64, 19.13 GSE)



RAD2
 Antenna Ey
 Mode LIN(1)
 SUM/SEP SEP
 Toggle OFF

RAD1
 Antenna Ex
 Mode LIS(2,4)
 SUM/SEP SUM
 Toggle OFF

TNR
 Antenna ExEy
 Mode A-32
 Sweep ACE