

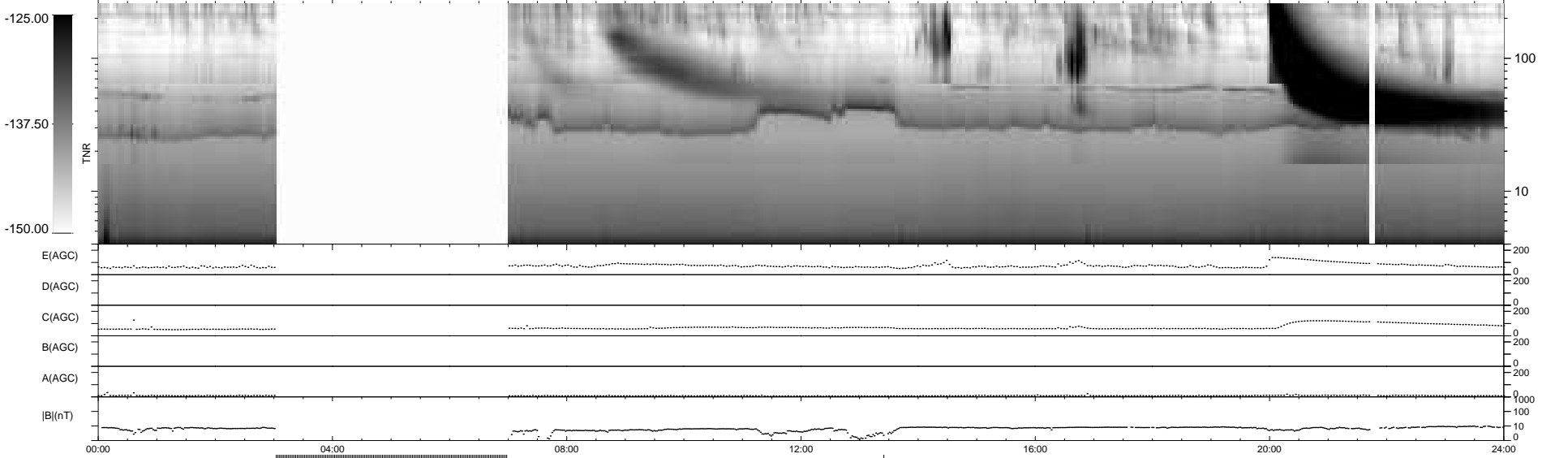
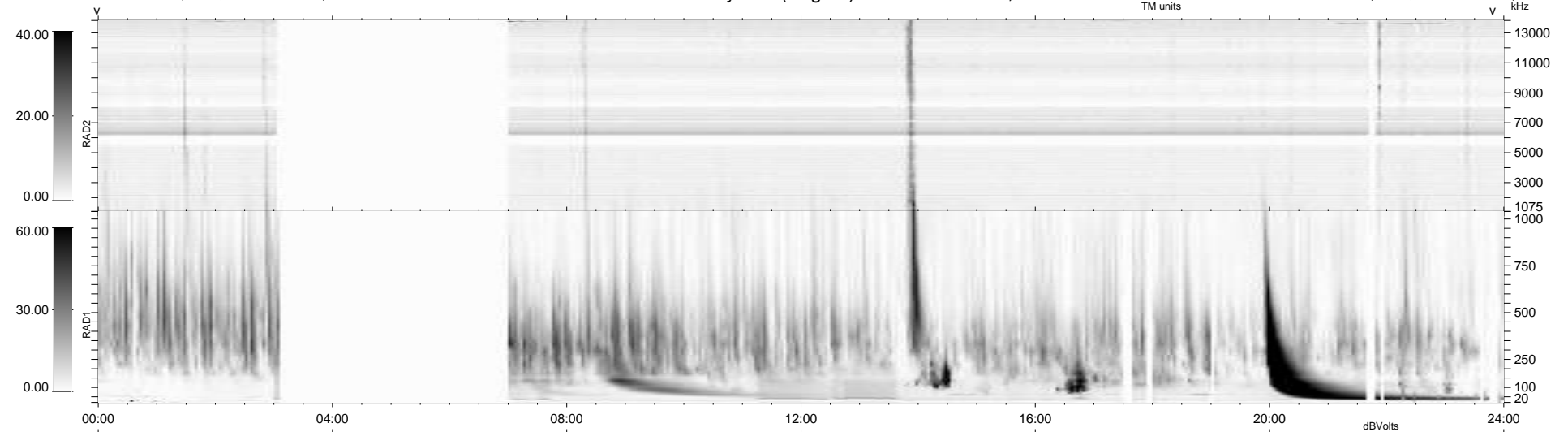
25 bad + 758 good MF/939MF projected (80%) - 156 missing MFs  
 Avg interval = 180 secs  
 Re = 260.78 (258.73, -26.41, 19.12 GSE)

windlib 2.0b

LZ version = v01

### WIND/WAVES Summary Plot (Page 1) for 18-OCT-2014, DOY = 291

DAILY 2014-10-20 12:46:03  
 Re = 260.76 (258.36, -29.64, 19.13 GSE)



RAD2  
 Antenna Ey  
 Mode LIN(1)  
 SUM/SEP SEP  
 Toggle OFF

RAD1  
 Antenna Ex  
 Mode LIS(2,4)  
 SUM/SEP SUM  
 Toggle OFF

TNR  
 Antenna ExEy  
 Mode A-32  
 Sweep ACE