

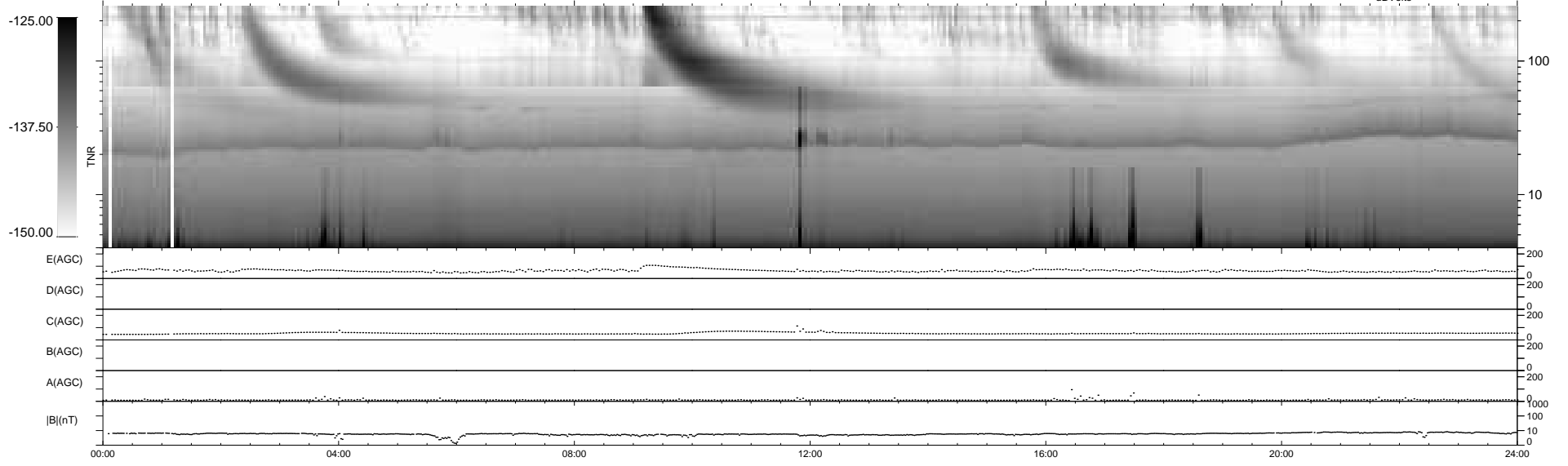
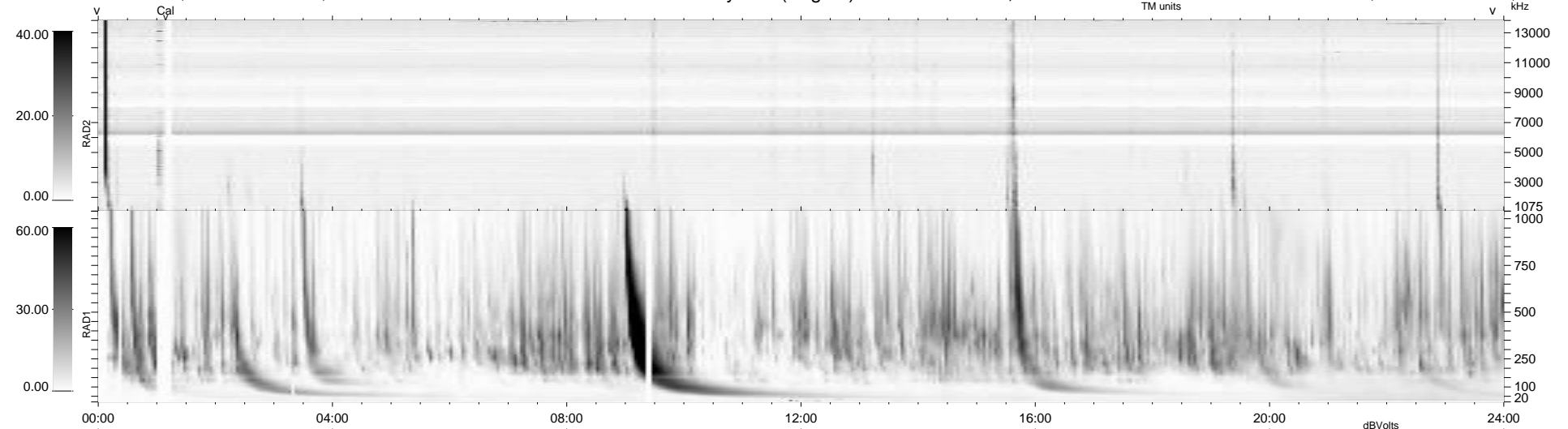
17 bad + 923 good MF/940MF projected (98%) - 0 missing MFs  
 Avg interval = 180 secs  
 Re = 260.77 (259.04, -23.09, 19.10 GSE)

windlib 2.0b

LZ version = v03

### WIND/WAVES Summary Plot (Page 1) for 17-OCT-2014, DOY = 290

DAILY 2014-11-05 16:00:26  
 Re = 260.78 (258.73, -26.39, 19.12 GSE)



RAD2  
 Antenna Ey .....  
 Mode LIN(1) .....  
 SUM/SEP SEP .....  
 Toggle OFF .....  
 RAD1  
 Antenna .....  
 Mode .....  
 SUM/SEP .....  
 Toggle .....  
 TNR  
 Antenna ExEy .....  
 Mode A-32 .....  
 Sweep ACE .....