

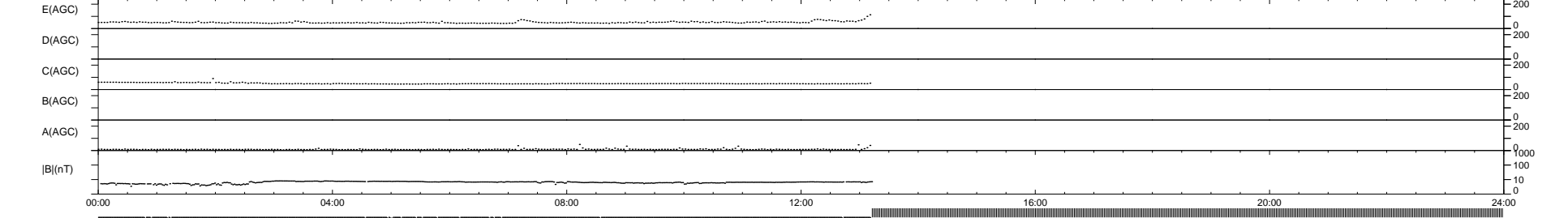
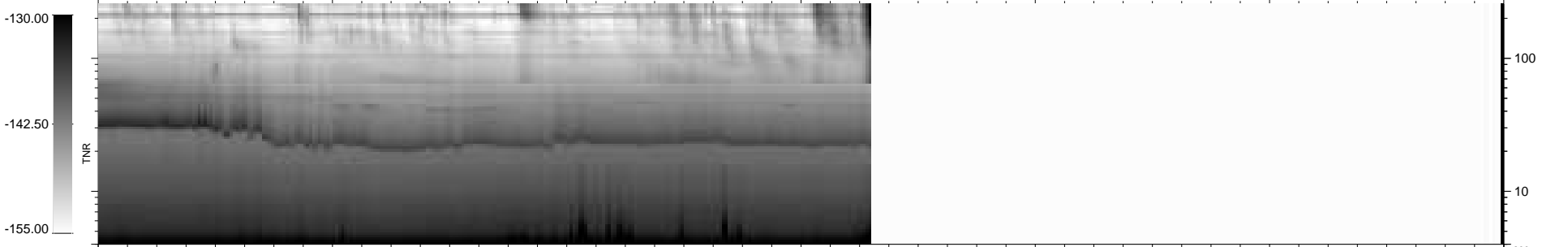
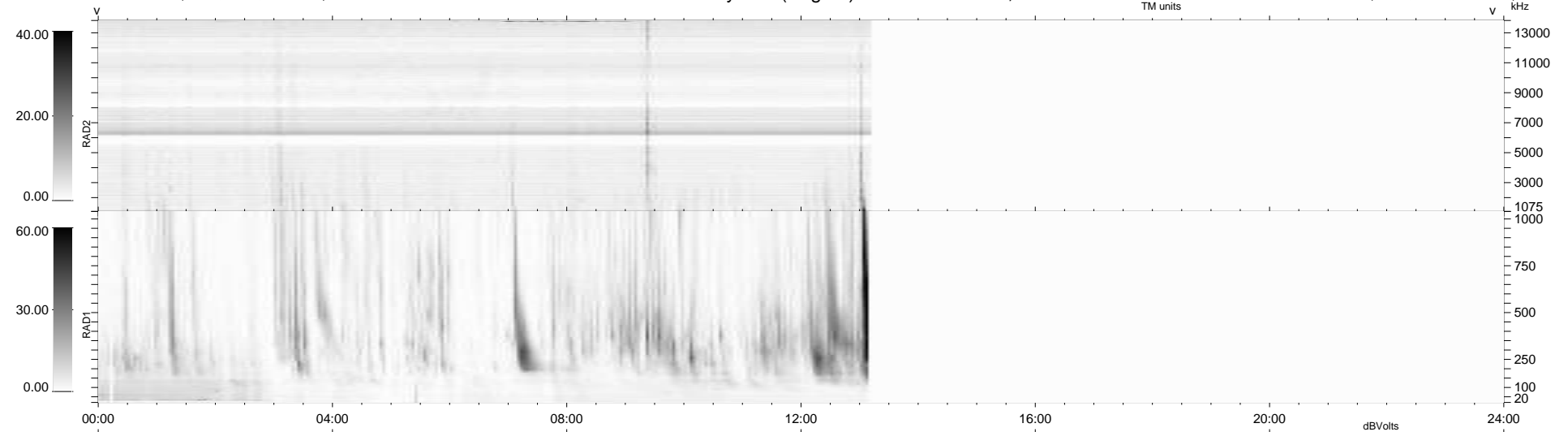
19 bad + 498 good MF/939MF projected (53%) - 422 missing MFs
 Avg interval = 180 secs
 Re = -260.74 (259.29, -19.72, 19.06 GSE)

windlib 2.0b

LZ version = v03

WIND/WAVES Summary Plot (Page 1) for 16-OCT-2014, DOY = 289

DAILY 2014-10-20 14:46:05
 Re = 260.77 (259.04, -23.07, 19.10 GSE)



```

RAD2
Antenna Ey .....
Mode LIN(1) .....
SUM/SEP SEP .....
Toggle OFF .....

RAD1
Antenna Ex .....
Mode LIS(2,4) .....
SUM/SEP SUM .....
Toggle OFF .....

TNR
Antenna ExEy .....
Mode A-32 .....
Sweep ACE .....
  
```