

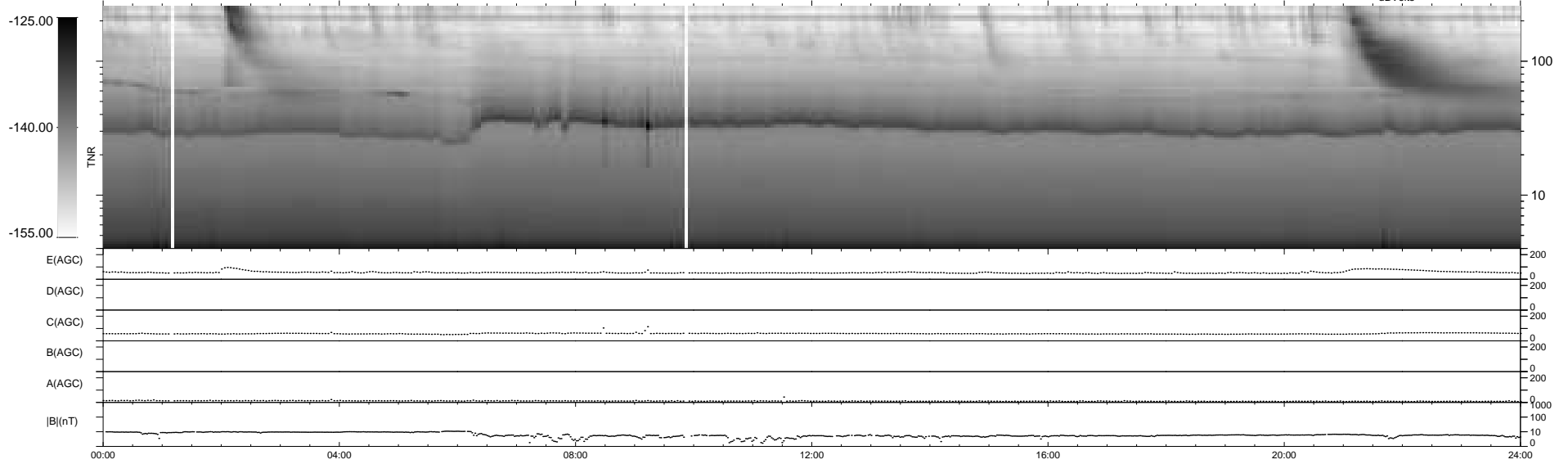
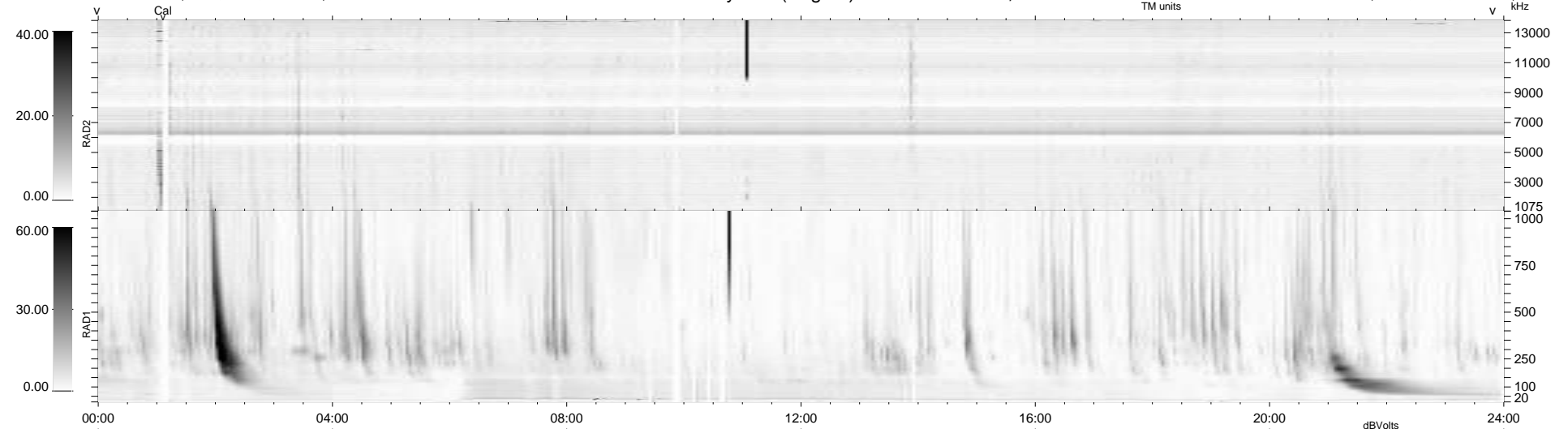
24 bad + 915 good MF/939MF projected (97%) - 0 missing MFs  
 Avg interval = 180 secs  
 Re = 260.69 (259.49, -16.30, 19.00 GSE)

windlib 2.0b

LZ version = v01

### WIND/WAVES Summary Plot (Page 1) for 15-OCT-2014, DOY = 288

DAILY 2014-11-05 15:58:36  
 Re = 260.74 (259.29, -19.70, 19.06 GSE)



RAD2  
 Antenna Ey  
 Mode LIN(1)  
 SUM/SEP SEP  
 Toggle OFF

RAD1  
 Antenna Ex  
 Mode LIS(2,4)  
 SUM/SEP SUM  
 Toggle OFF

TNR  
 Antenna ExEy  
 Mode A-32  
 Sweep ACE