

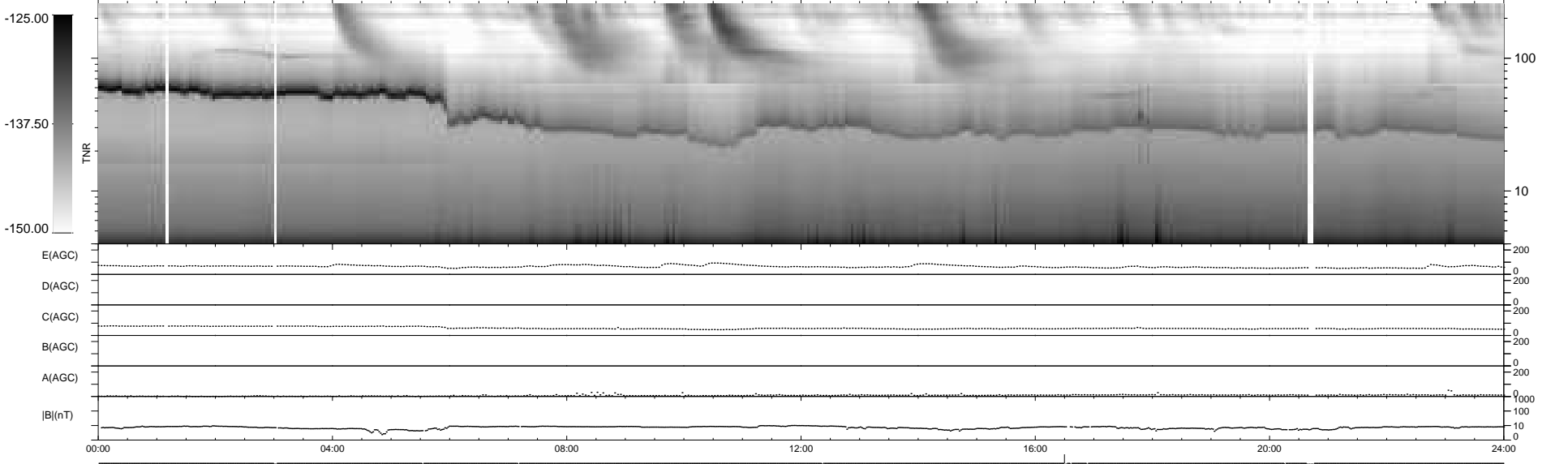
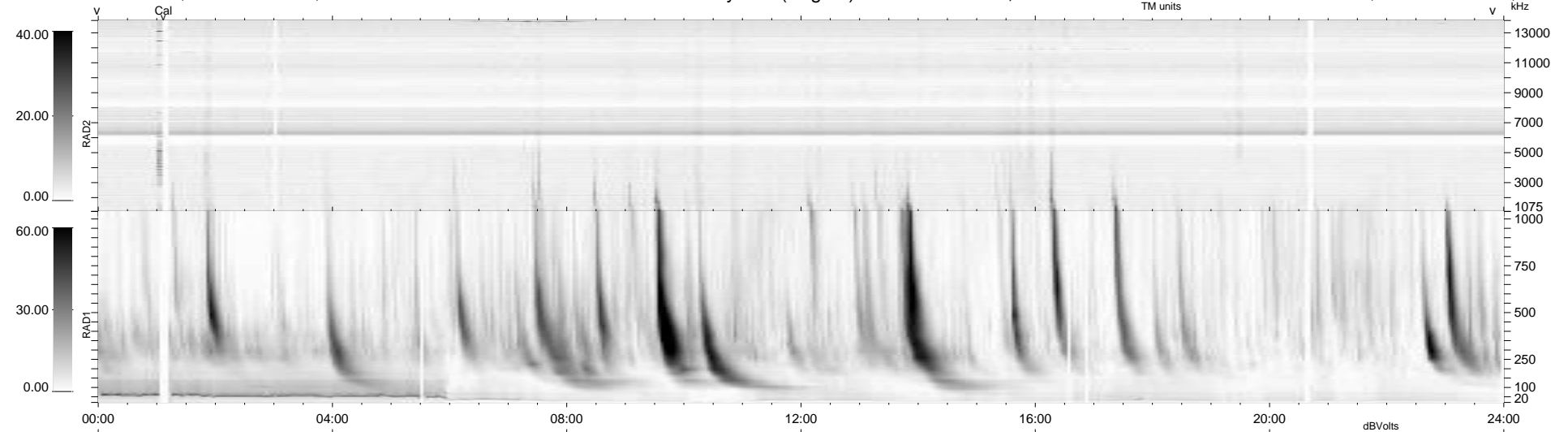
14 bad + 924 good MF/939MF projected (98%) - 1 missing MF  
 Avg interval = 180 secs  
 Re = 260.59 (259.74, -9.31, 18.84 GSE)

windlib 2.0b

LZ version = v02

### WIND/WAVES Summary Plot (Page 1) for 13-OCT-2014, DOY = 286

DAILY 2014-11-05 15:56:47  
 Re = 260.64 (259.64, -12.80, 18.93 GSE)



RAD2  
 Antenna Ey .....  
 Mode LIN(1) .....  
 SUM/SEP SEP .....  
 Toggle OFF .....  
 RAD1  
 Antenna Ex .....  
 Mode LIS(2,4) .....  
 SUM/SEP SUM .....  
 Toggle OFF .....  
 TNR  
 Antenna ExEy .....  
 Mode A-32 .....  
 Sweep ACE .....