

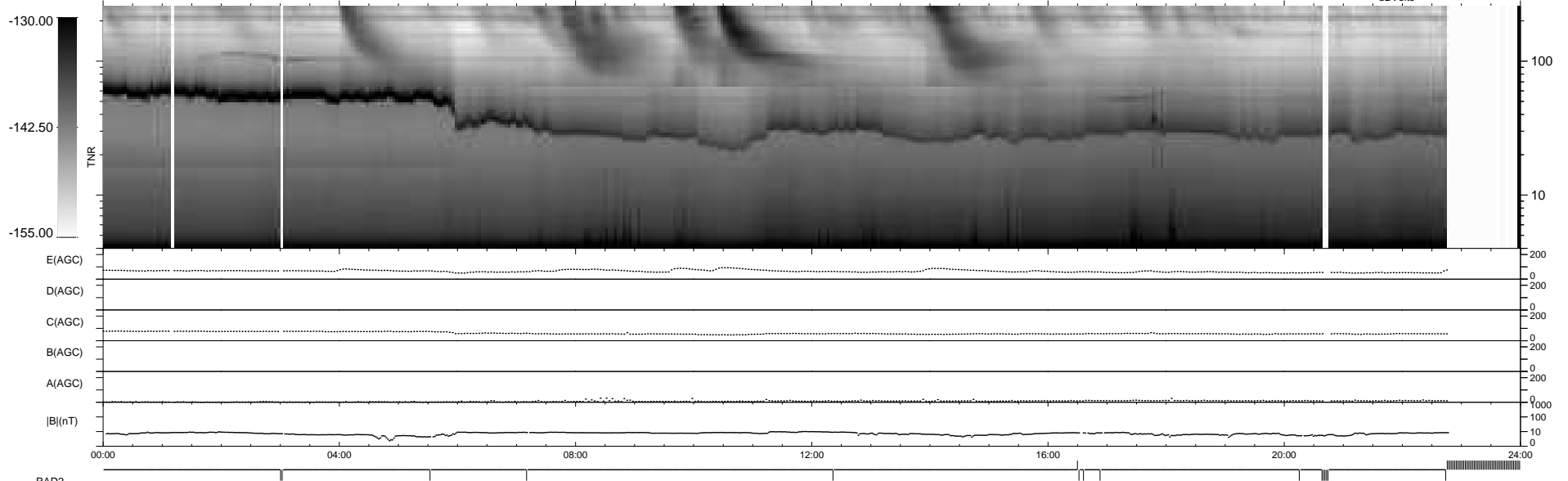
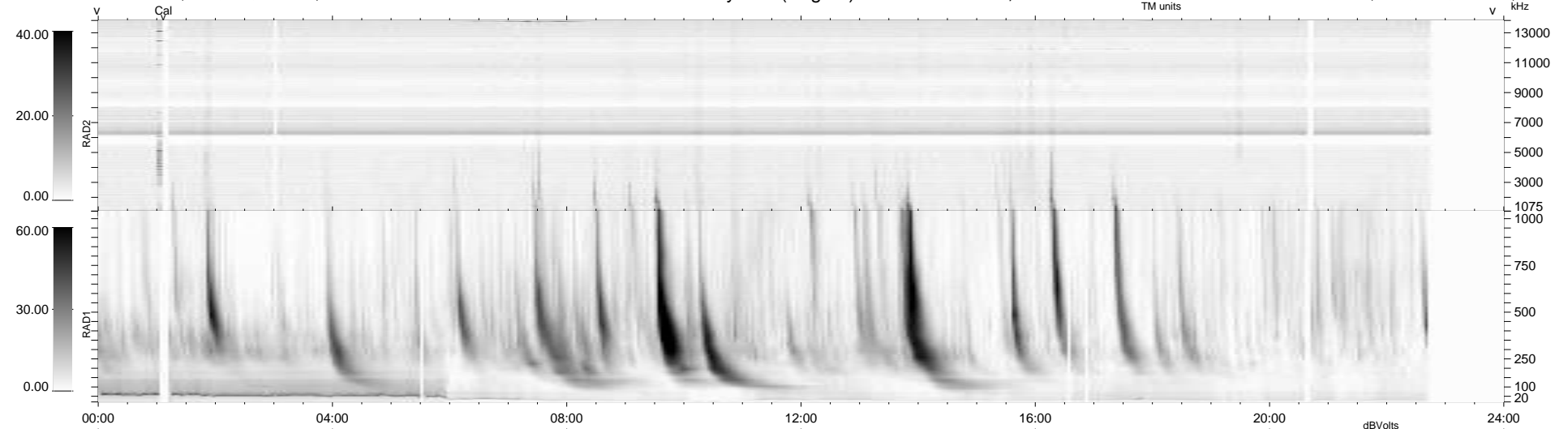
15 bad + 874 good MF/939MF projected (93%) - 50 missing MFs  
 Avg interval = 180 secs  
 Re = 260.59 (259.74, -9.31, 18.84 GSE)

windlib 2.0b

LZ version = v01

### WIND/WAVES Summary Plot (Page 1) for 13-OCT-2014, DOY = 286

DAILY 2014-10-14 17:46:05  
 Re = 260.64 (259.64, -12.80, 18.93 GSE)



```

RAD2
Antenna Ey .....
Mode LIN(1) .....
SUM/SEP SEP .....
Toggle OFF .....

RAD1
Antenna Ex .....
Mode LIS(2,4) .....
SUM/SEP SUM .....
Toggle OFF .....

TNR
Antenna ExEy .....
Mode A-32 .....
Sweep ACE .....
  
```