

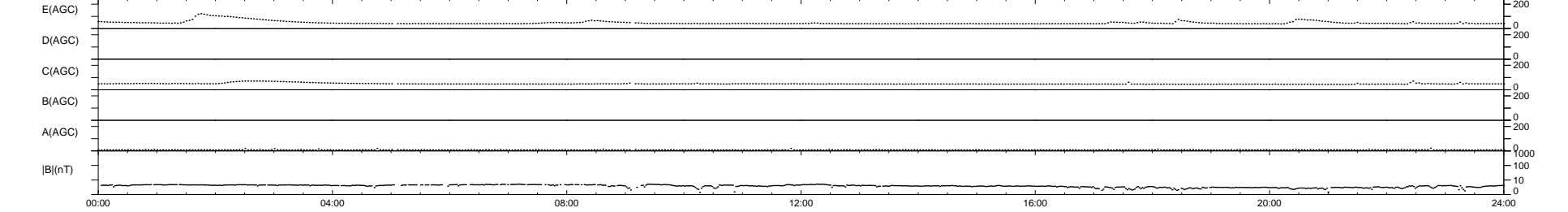
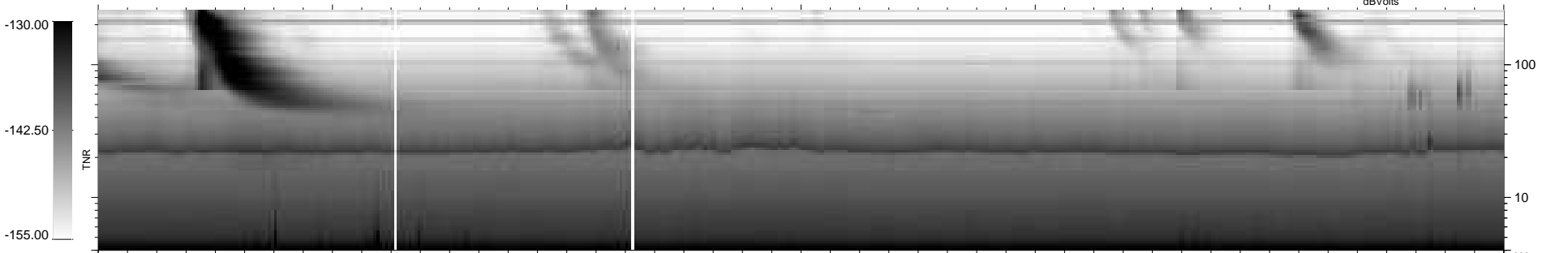
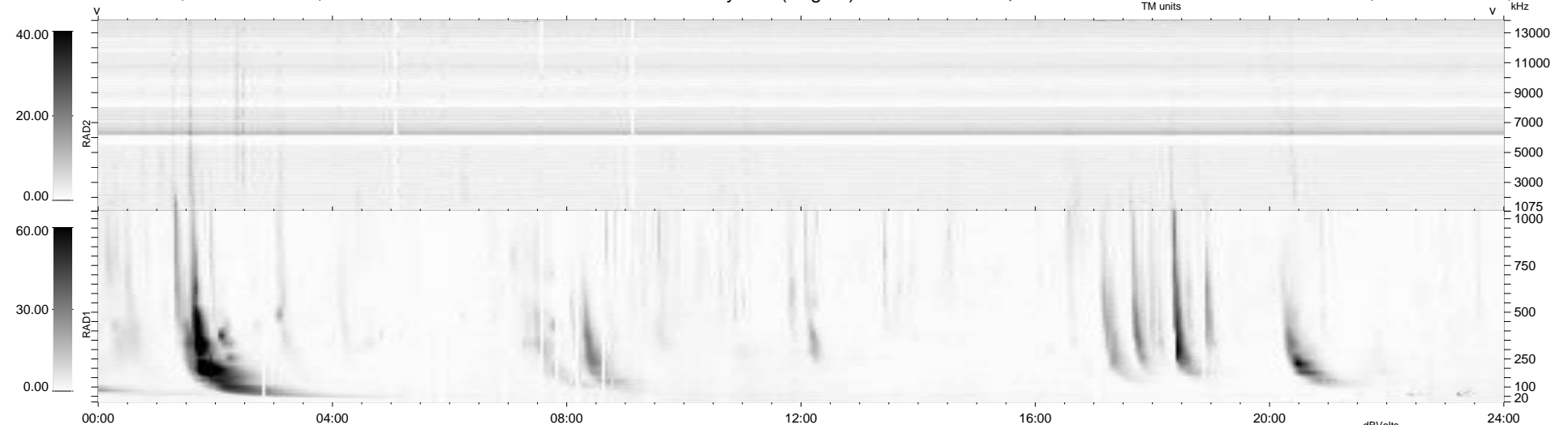
45 bad + 894 good MF/939MF projected (95%) - 0 missing MFs
 Avg interval = 180 secs
 Re = 260.79 (259.70, 15.85, 17.78 GSE)

windlib 2.0b

LZ version = v02

WIND/WAVES Summary Plot (Page 1) for 06-OCT-2014, DOY = 279

DAILY 2014-11-05 15:50:22
 Re = 260.68 (259.76, 12.30, 17.98 GSE)



RAD2
 Antenna Ey
 Mode LIN(1)
 SUM/SEP SEP
 Toggle OFF

RAD1
 Antenna Ex
 Mode LIS(2,4)
 SUM/SEP SUM
 Toggle OFF

TNR
 Antenna ExEy
 Mode A-32
 Sweep ACE