

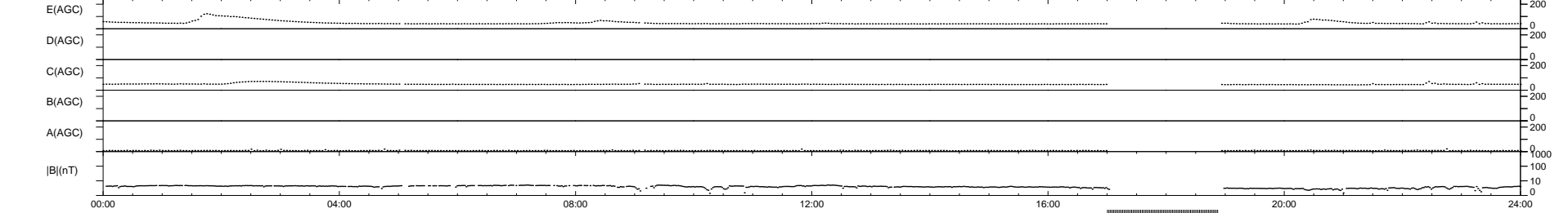
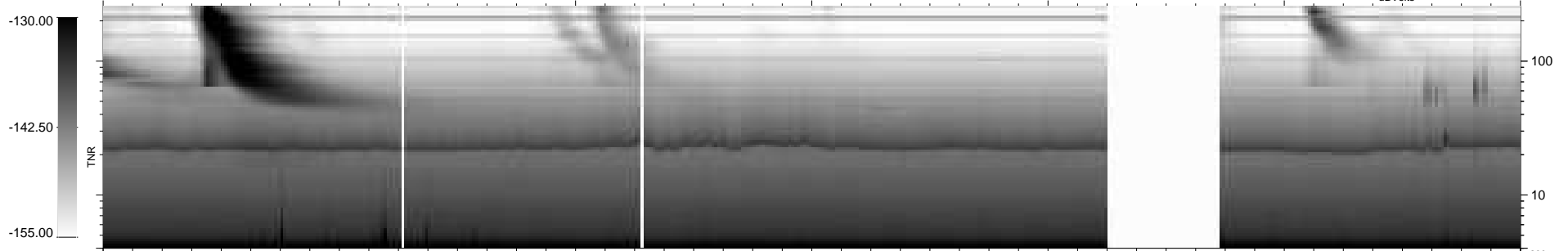
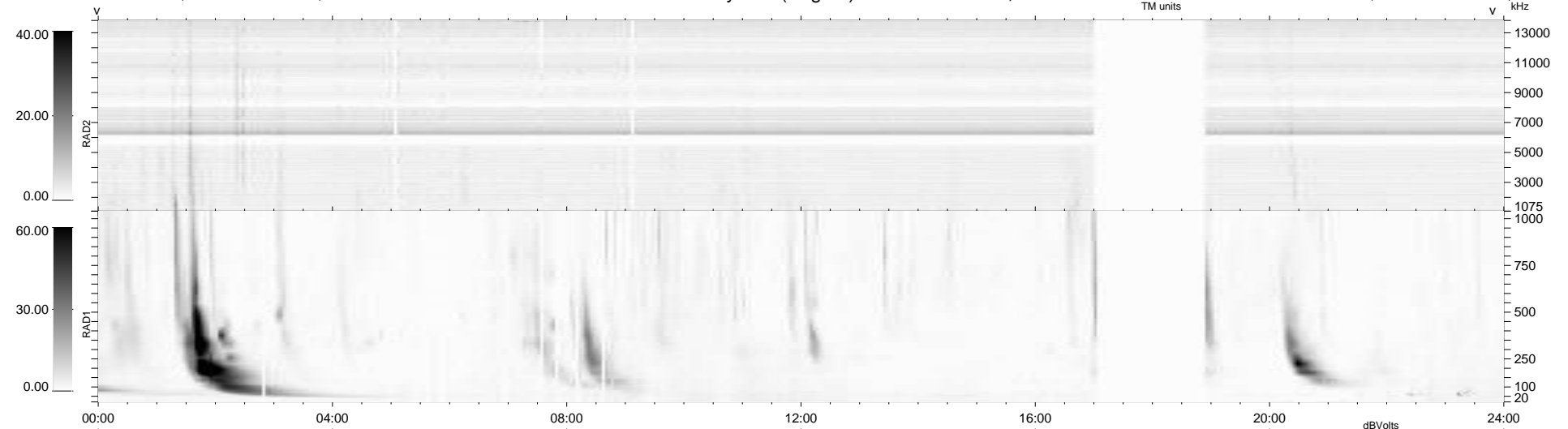
44 bad + 821 good MF/939MF projected (87%) - 74 missing MFs
Avg interval = 180 secs
Re = 260.79 (259.70, 15.85, 17.78 GSE)

windlib 2.0b

LZ version = v01

WIND/WAVES Summary Plot (Page 1) for 06-OCT-2014, DOY = 279

DAILY 2014-10-07 19:46:03
Re = 260.68 (259.76, 12.30, 17.98 GSE)



RAD2
Antenna Ey
Mode LIN(1)
SUM/SEP SEP
Toggle OFF

RAD1
Antenna Ex
Mode LIS(2,4)
SUM/SEP SUM
Toggle OFF

TNR
Antenna ExEy
Mode A-32
Sweep ACE