

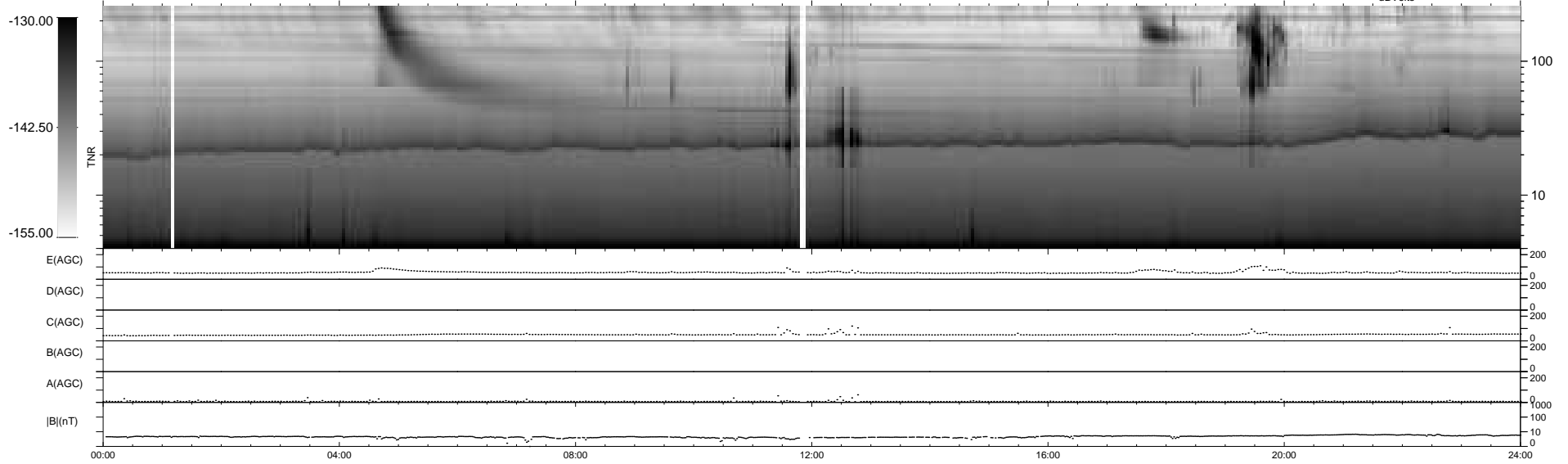
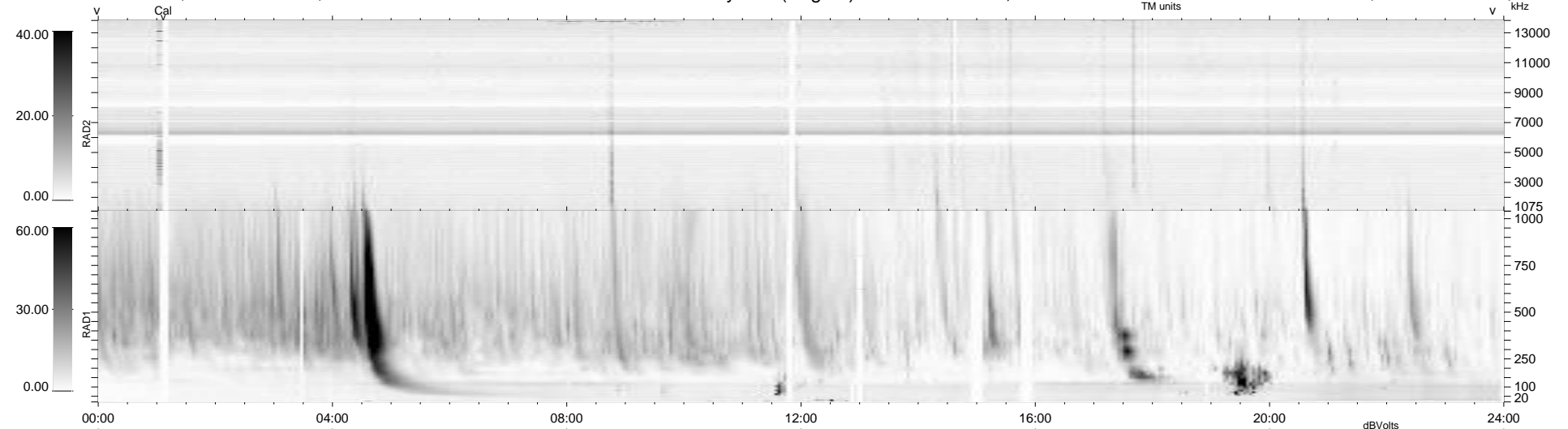
40 bad + 899 good MF/939MF projected (95%) - 0 missing MFs
 Avg interval = 180 secs
 Re = 261.70 (258.25, 39.32, 15.80 GSE)

windlib 2.0b

LZ version = v01

WIND/WAVES Summary Plot (Page 1) for 29-SEP-2014, DOY = 272

DAILY 2014-09-30 18:46:03
 Re = 261.62 (258.60, 36.19, 16.13 GSE)



RAD2
 Antenna Ey
 Mode LIN(1)
 SUM/SEP SEP
 Toggle OFF
 RAD1
 Antenna Ex
 Mode LIS(2,4)
 SUM/SEP SUM
 Toggle OFF
 TNR
 Antenna ExEy
 Mode A-32
 Sweep ACE