

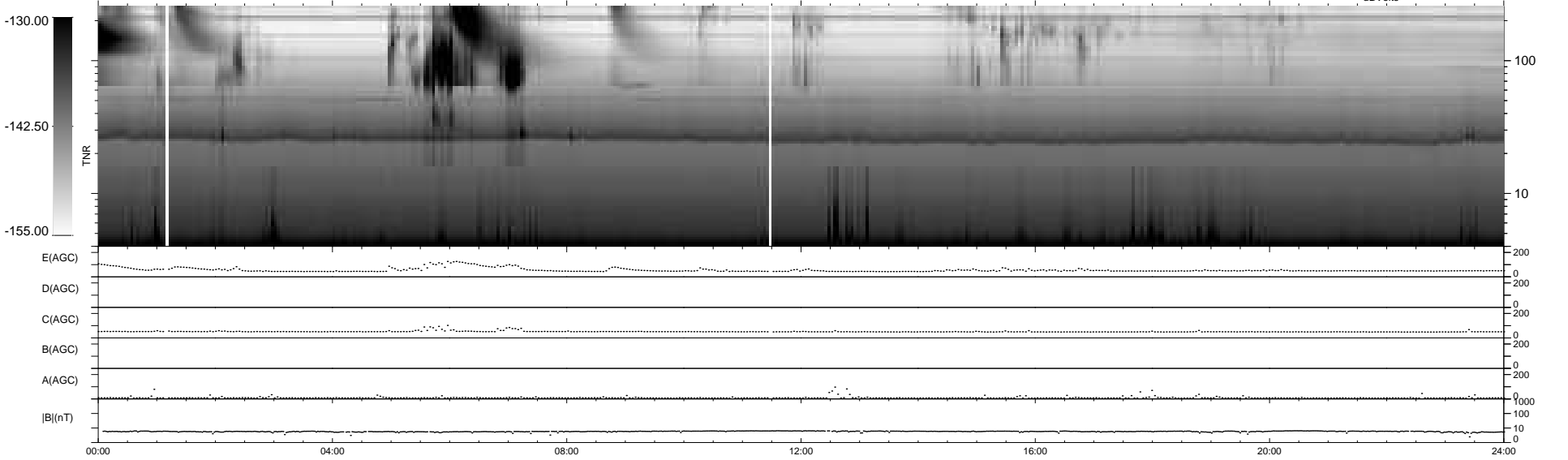
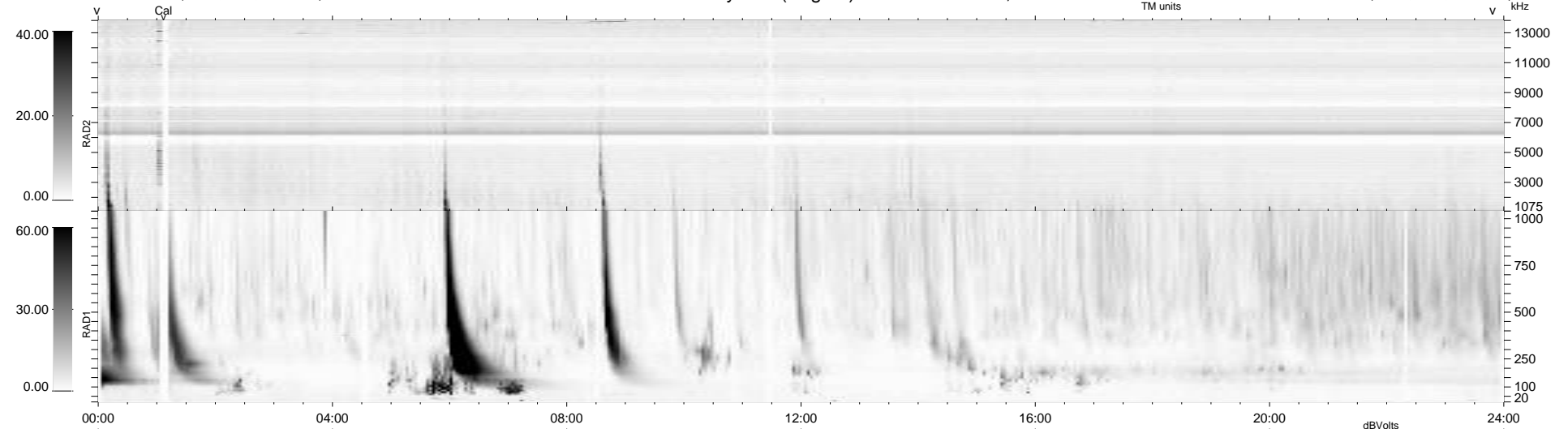
27 bad + 912 good MF/939MF projected (97%) - 0 missing MFs
 Avg interval = 180 secs
 Re = 261.74 (257.33, 45.40, 15.06 GSE)

windlib 2.0b

LZ version = v01

WIND/WAVES Summary Plot (Page 1) for 27-SEP-2014, DOY = 270

DAILY 2014-09-28 12:46:03
 Re = 261.74 (257.82, 42.41, 15.43 GSE)



RAD2
 Antenna Ey
 Mode LIN(1)
 SUM/SEP SEP
 Toggle OFF
 RAD1
 Antenna
 Mode
 SUM/SEP
 Toggle
 TNR
 Antenna ExEy
 Mode A-32
 Sweep ACE