

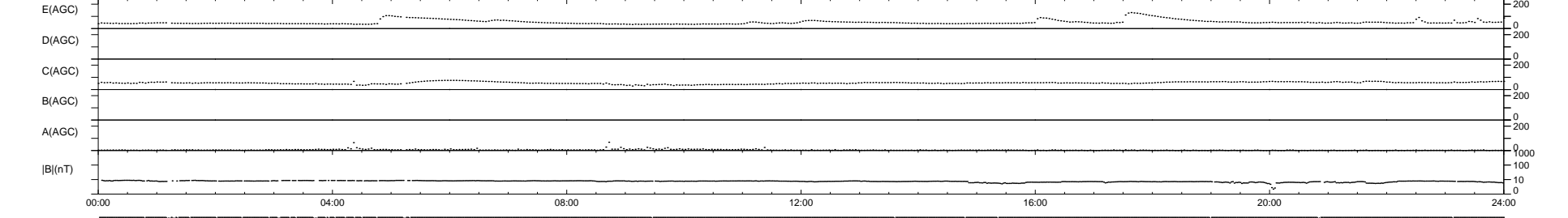
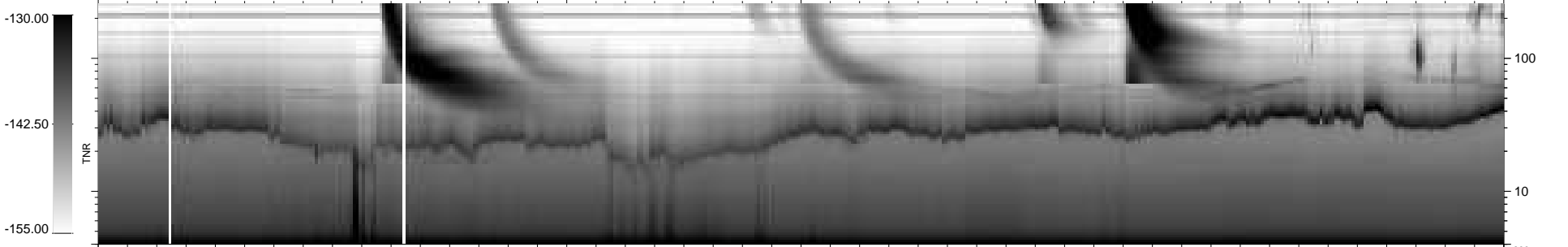
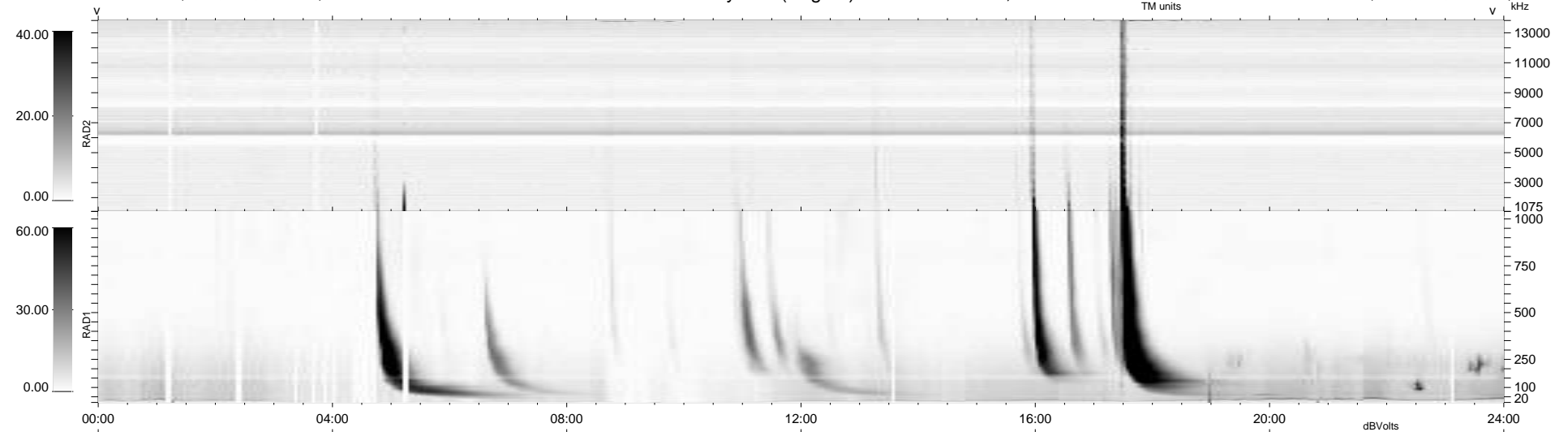
36 bad + 903 good MF/939MF projected (96%) - 0 missing MFs  
 Avg interval = 180 secs  
 Re = 259.55 (249.80, 69.57, 11.11 GSE)

windlib 2.0b

LZ version = v02

### WIND/WAVES Summary Plot (Page 1) for 18-SEP-2014, DOY = 261

DAILY 2014-09-22 12:46:04  
 Re = 259.95 (250.87, 67.13, 11.59 GSE)



RAD2  
 Antenna Ey  
 Mode LIN(1)  
 SUM/SEP SEP  
 Toggle OFF

RAD1  
 Antenna Ex  
 Mode LIS(2,4)  
 SUM/SEP SUM  
 Toggle OFF

TNR  
 Antenna ExEy  
 Mode A-32  
 Sweep ACE