

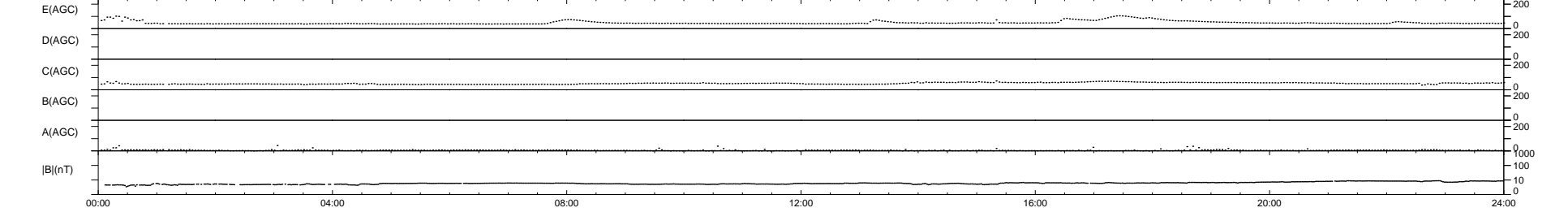
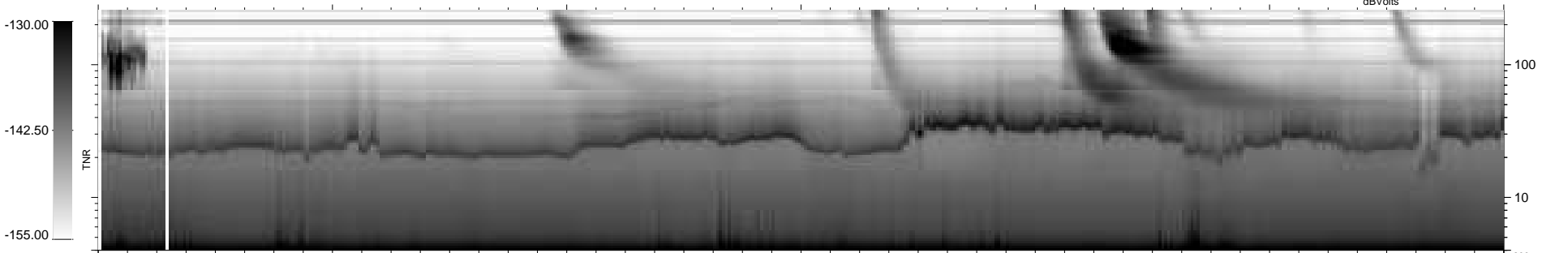
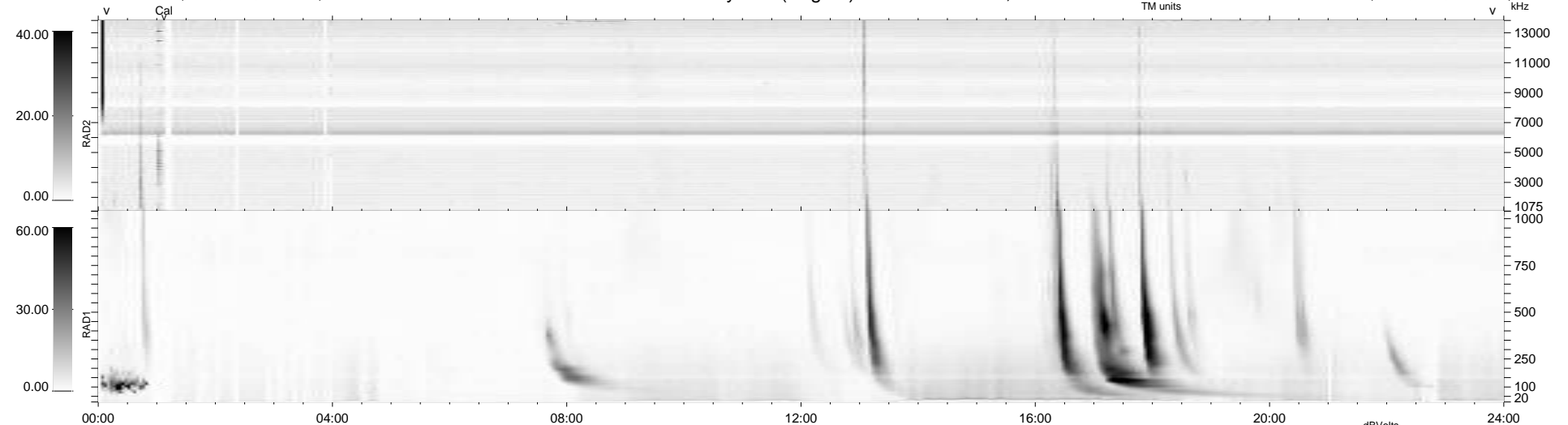
28 bad + 911 good MF/939MF projected (97%) - 0 missing MFs
Avg interval = 180 secs
Re = 259.12 (248.70, 71.95, 10.63 GSE)

windlib 2.0b

LZ version = v01

WIND/WAVES Summary Plot (Page 1) for 17-SEP-2014, DOY = 260

DAILY 2014-09-18 21:46:06
Re = 259.54 (249.79, 69.59, 11.11 GSE)



RAD2 Antenna Mode SUM/SEP Toggle
RAD1 Antenna Mode SUM/SEP Toggle
TNR Antenna Mode Sweep