

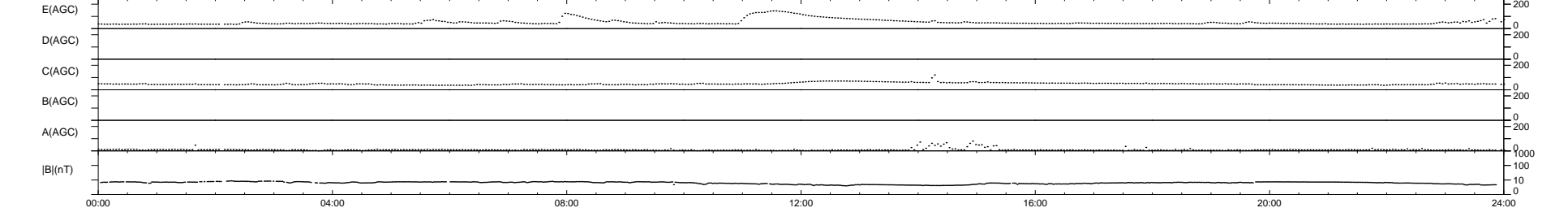
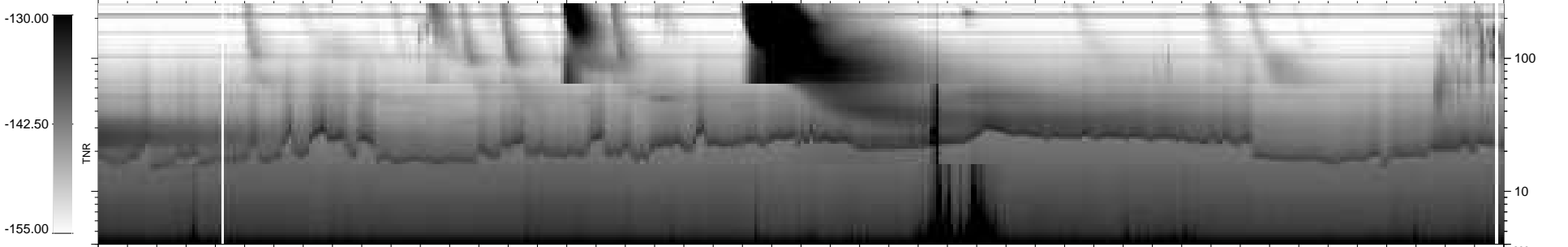
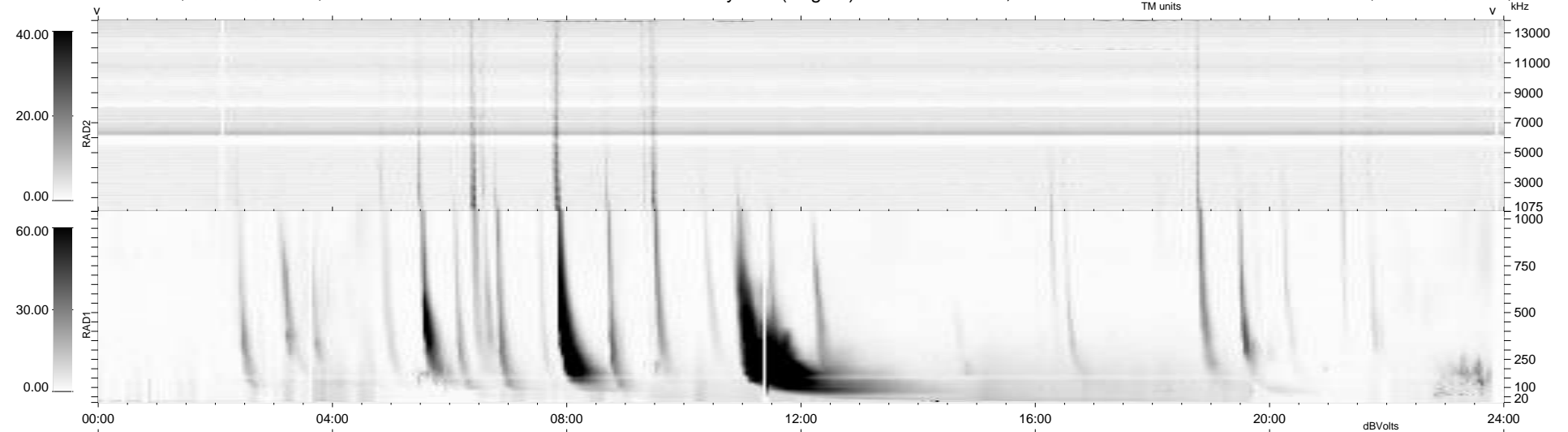
29 bad + 911 good MF/940MF projected (96%) - 0 missing MFs  
 Avg interval = 180 secs  
 Re = 258.66 (247.55, 74.31, 10.14 GSE)

windlib 2.0b

LZ version = v01

### WIND/WAVES Summary Plot (Page 1) for 16-SEP-2014, DOY = 259

DAILY 2014-09-17 15:46:03  
 Re = 259.11 (248.68, 71.99, 10.63 GSE)



RAD2  
 Antenna Ey  
 Mode LIN(1)  
 SUM/SEP SEP  
 Toggle OFF

RAD1  
 Antenna Ex  
 Mode LIS(2,4)  
 SUM/SEP SUM  
 Toggle OFF

TNR  
 Antenna ExEy  
 Mode A-32  
 Sweep ACE