

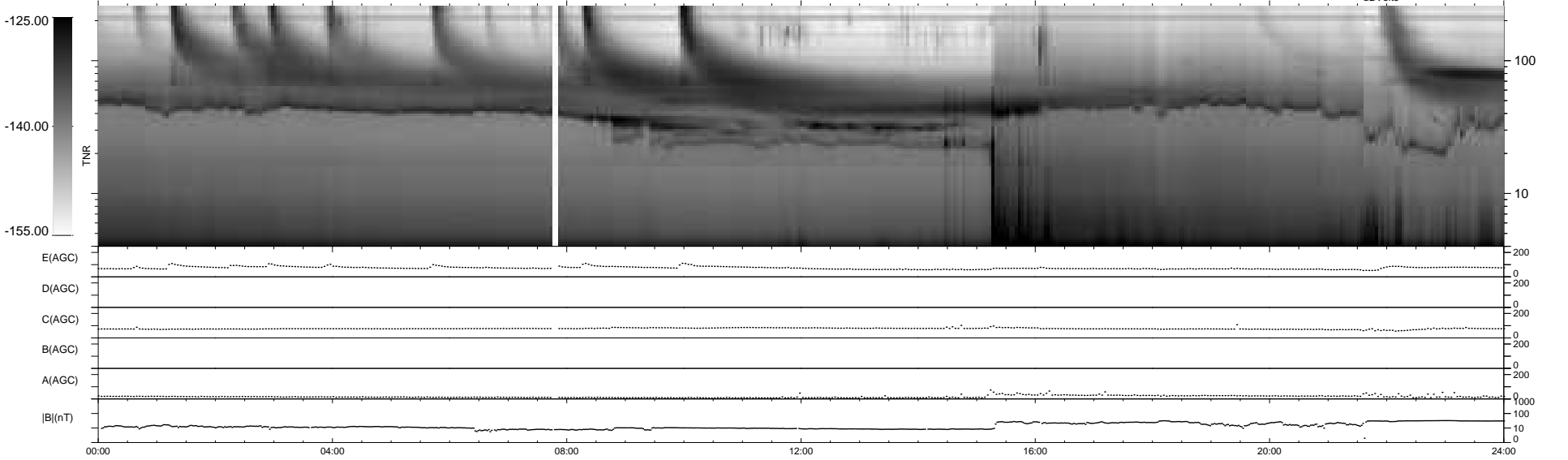
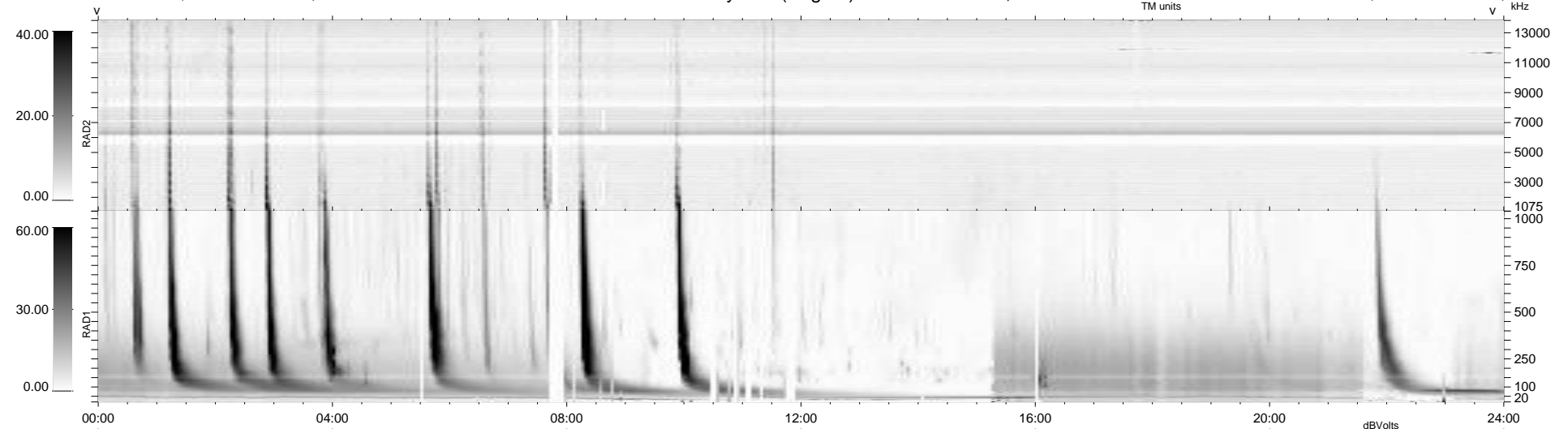
40 bad + 899 good MF/939MF projected (95%) - 0 missing MFs
 Avg interval = 180 secs
 Re = -256.76 (242.81, 83.10, 8.10 GSE)

windlib 2.0b

LZ version = v01

WIND/WAVES Summary Plot (Page 1) for 12-SEP-2014, DOY = 255

DAILY 2014-09-13 13:46:04
 Re = 257.24 (243.99, 81.02, 8.62 GSE)



```

RAD2
Antenna Ey .....
Mode LIN(1) .....
SUM/SEP SEP .....
Toggle OFF .....

RAD1
Antenna Ex .....
Mode LIS(2,4) .....
SUM/SEP SUM .....
Toggle OFF .....

TNR
Antenna ExEy .....
Mode A-32 .....
Sweep ACE .....
  
```