

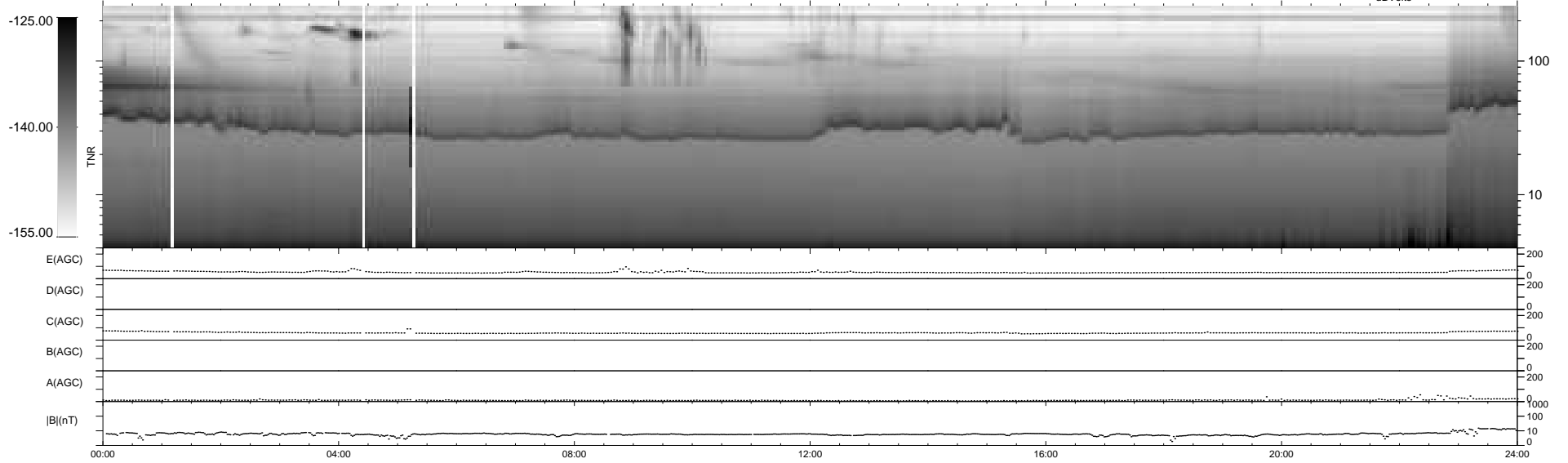
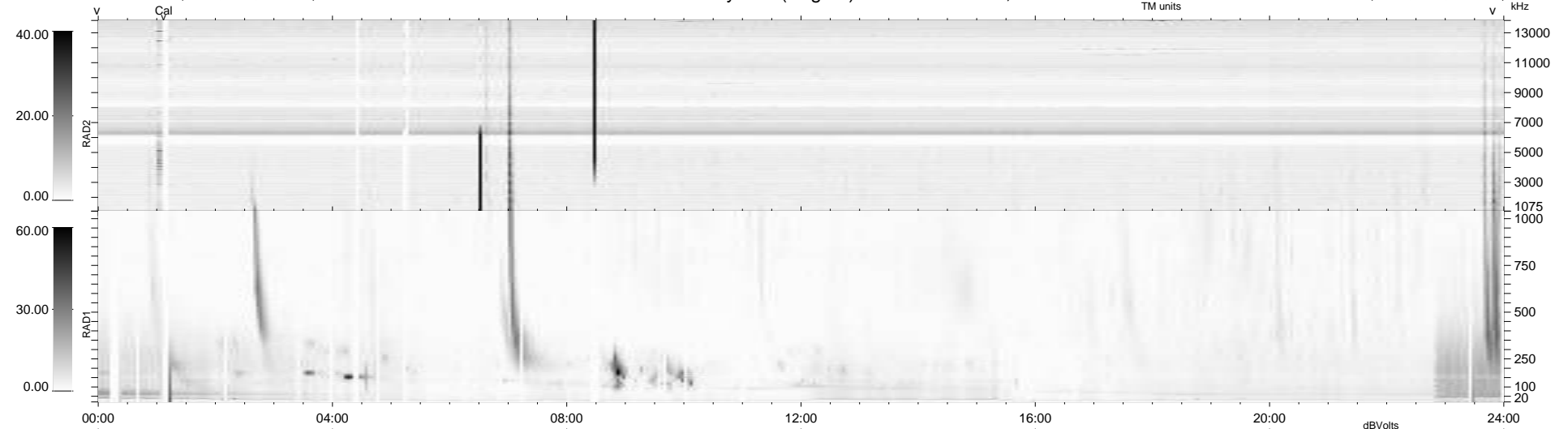
40 bad + 899 good MF/939MF projected (95%) - 0 missing MFs
 Avg interval = 180 secs
 Re = - 256.30 (241.62, 85.13, 7.57 GSE)

windlib 2.0b

LZ version = v01

WIND/WAVES Summary Plot (Page 1) for 11-SEP-2014, DOY = 254

DAILY 2014-09-12 21:46:03
 Re = 256.76 (242.80, 83.12, 8.10 GSE)



RAD2 Antenna Ey
 Mode LIN(1)
 SUM/SEP SEP
 Toggle OFF
 RAD1 Antenna Ex
 Mode LIS(2,4)
 SUM/SEP SUM
 Toggle OFF
 TNR Antenna ExEy
 Mode A-32
 Sweep ACE