

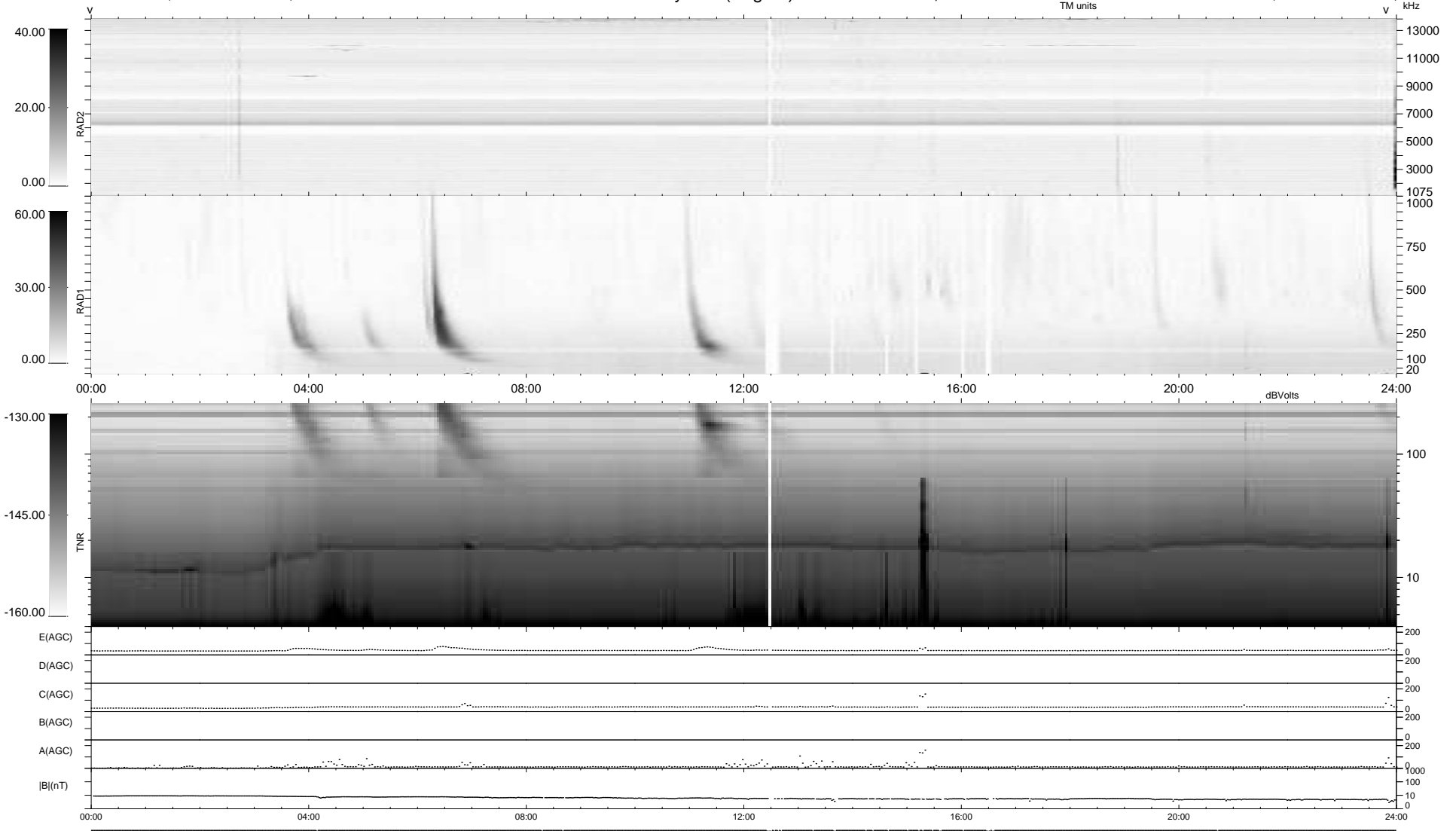
29 bad + 910 good MF/939MF projected (96%) - 0 missing MFs  
 Avg interval = 180 secs  
 Re = -254.95 (238.20, 90.68, 5.94 GSE)

windlib 2.0b

LZ version = v01

### WIND/WAVES Summary Plot (Page 1) for 08-SEP-2014, DOY = 251

DAILY 2014-09-09 14:46:05  
 Re = 255.39 (239.31, 88.94, 6.49 GSE)



```

RAD2
Antenna Ey .....
Mode LIN(1) .....
SUM/SEP SEP .....
Toggle OFF .....

RAD1
Antenna Ex .....
Mode LIS(2,4) .....
SUM/SEP SUM .....
Toggle OFF .....

TNR
Antenna ExEy .....
Mode A-32 .....
Sweep ACE .....
  
```