

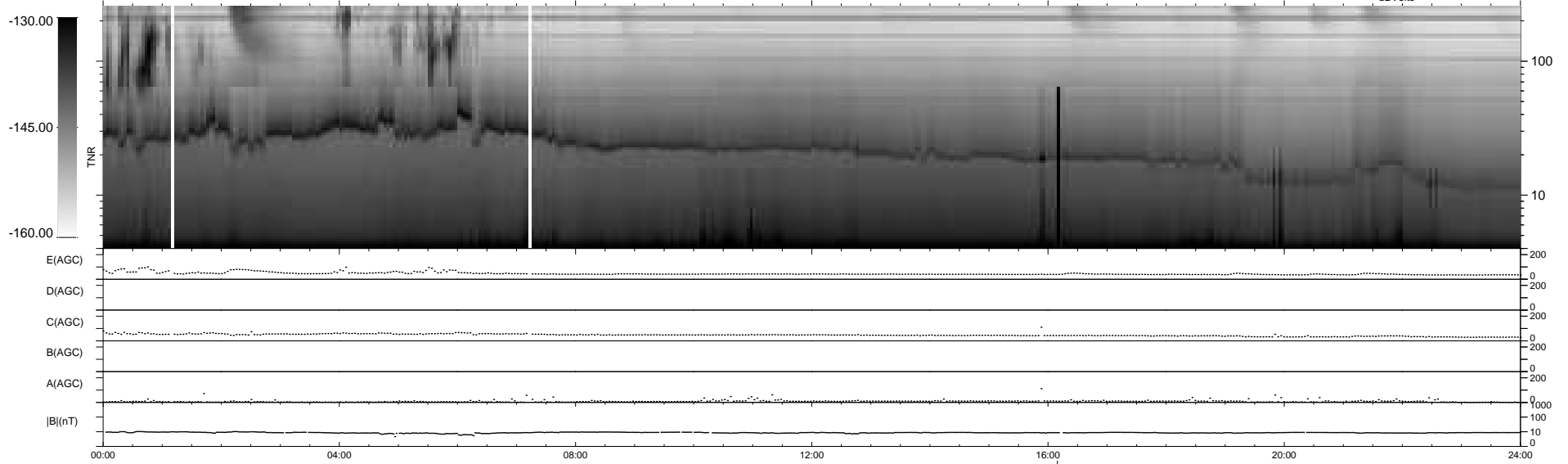
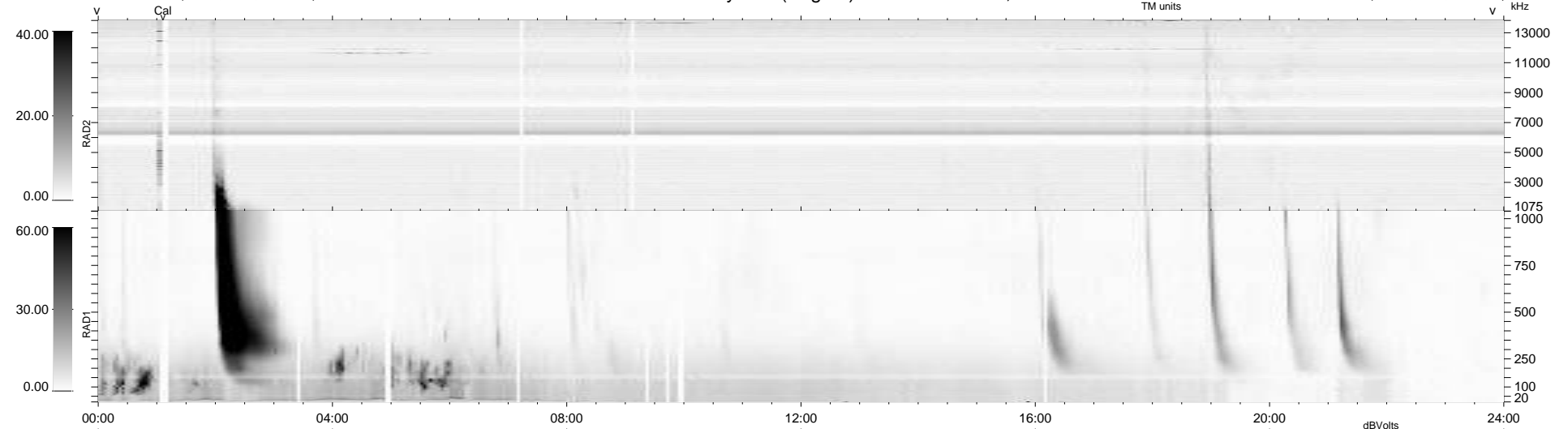
27 bad + 911 good MF/939MF projected (97%) - 1 missing MF  
 Avg interval = 180 secs  
 Re = 254.51 (237.11, 92.31, 5.38 GSE)

windlib 2.0b

LZ version = v01

### WIND/WAVES Summary Plot (Page 1) for 07-SEP-2014, DOY = 250

DAILY 2014-09-09 04:46:04  
 Re = 254.94 (238.19, 90.69, 5.94 GSE)



```

RAD2
Antenna Ey .....
Mode LIN(1) .....
SUM/SEP SEP .....
Toggle OFF .....

RAD1
Antenna Ex .....
Mode LIS(2,4) .....
SUM/SEP SUM .....
Toggle OFF .....

TNR
Antenna ExEy .....
Mode A-32 .....
Sweep ACE .....
  
```