

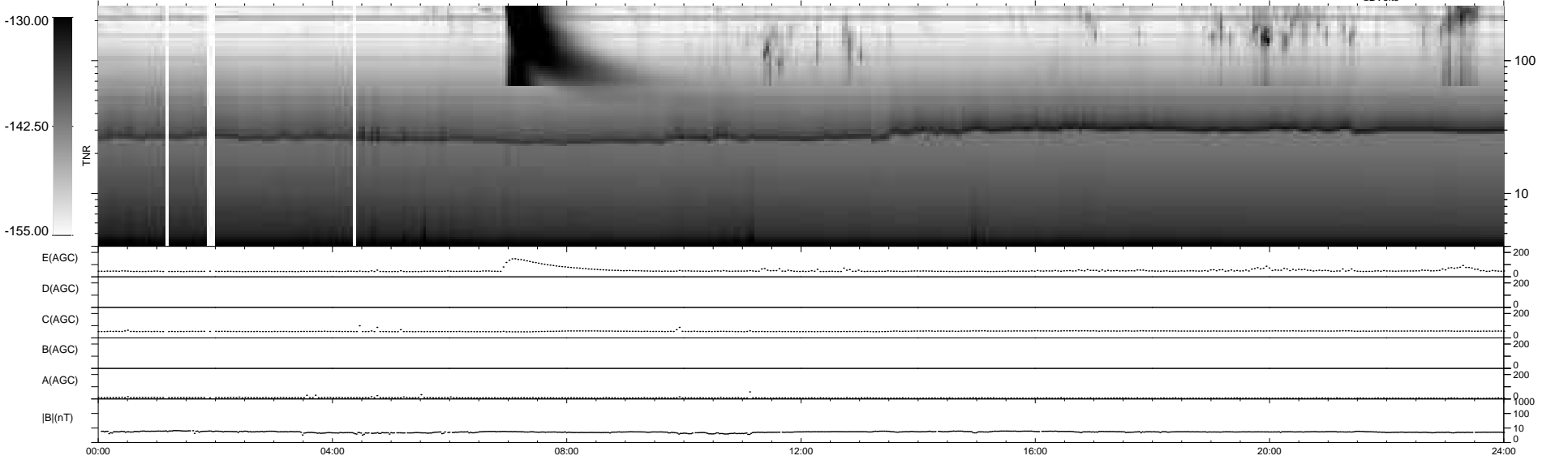
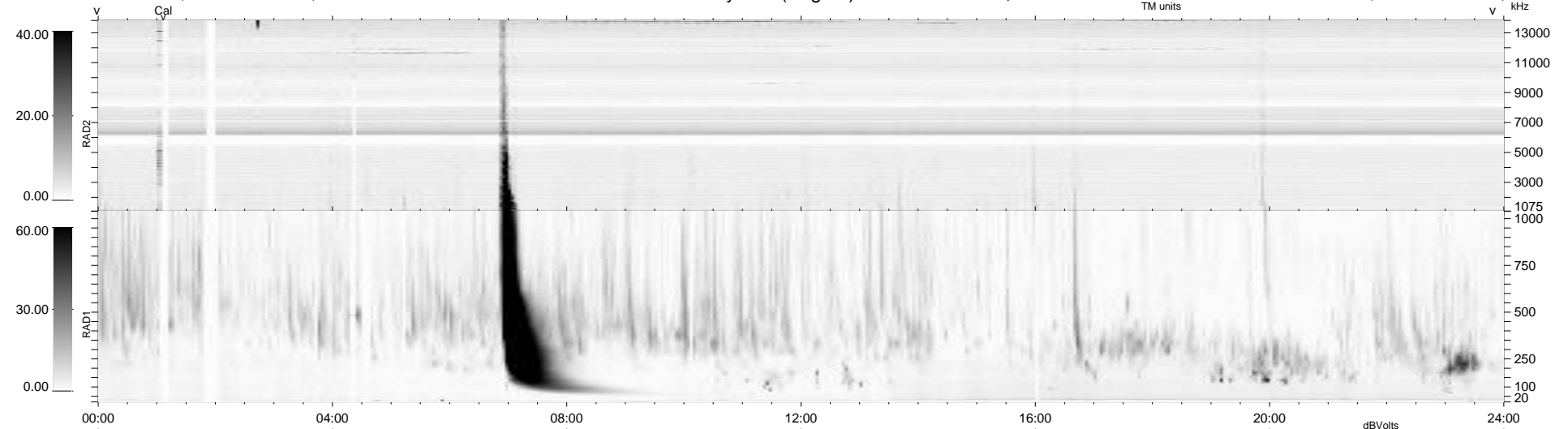
28 bad + 911 good MF/939MF projected (97%) - 0 missing MFs
 Avg interval = 180 secs
 Re = 253.60 (235.01, 95.20, 4.23 GSE)

windlib 2.0b

LZ version = v01

WIND/WAVES Summary Plot (Page 1) for 05-SEP-2014, DOY = 248

DAILY 2014-09-06 20:46:06
 Re = 254.06 (236.04, 93.83, 4.81 GSE)



RAD2
 Antenna Ey
 Mode LIN(1)
 SUM/SEP SEP
 Toggle OFF

RAD1
 Antenna Ex
 Mode LIS(2,4)
 SUM/SEP SUM
 Toggle OFF

TNR
 Antenna ExEy
 Mode A-32
 Sweep ACE