

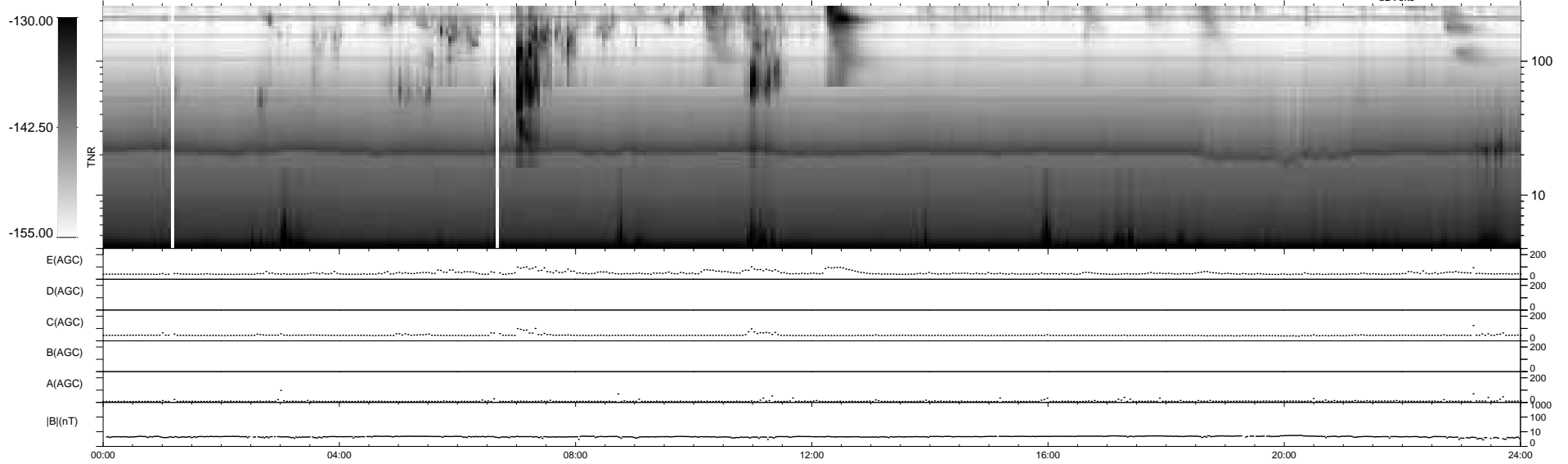
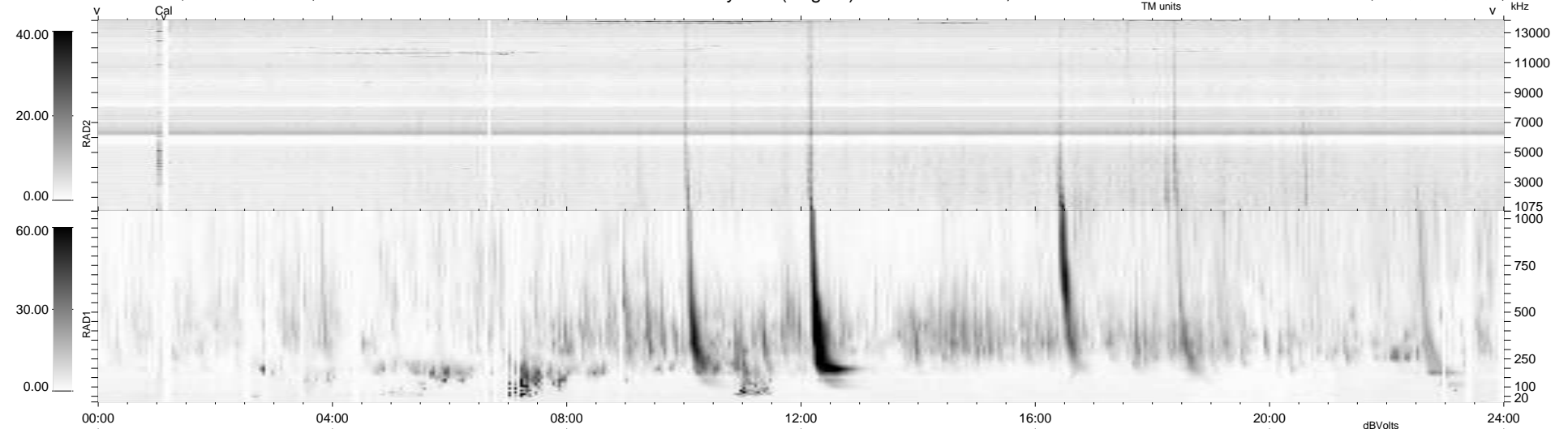
35 bad + 904 good MF/939MF projected (96%) - 0 missing MFs  
 Avg interval = 180 secs  
 Re = 252.59 (232.98, 97.52, 3.05 GSE)

windlib 2.0b

LZ version = v01

### WIND/WAVES Summary Plot (Page 1) for 03-SEP-2014, DOY = 246

DAILY 2014-09-04 15:46:03  
 Re = 253.11 (233.98, 96.44, 3.64 GSE)



```

RAD2
Antenna Ey .....
Mode LIN(1) .....
SUM/SEP SEP .....
Toggle OFF .....

RAD1
Antenna Ex .....
Mode LIS(2,4) .....
SUM/SEP SUM .....
Toggle OFF .....

TNR
Antenna ExEy .....
Mode A-32 .....
Sweep ACE .....
  
```