

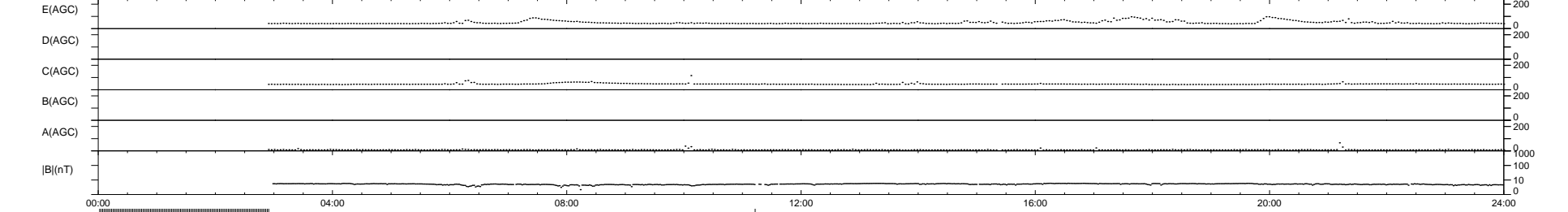
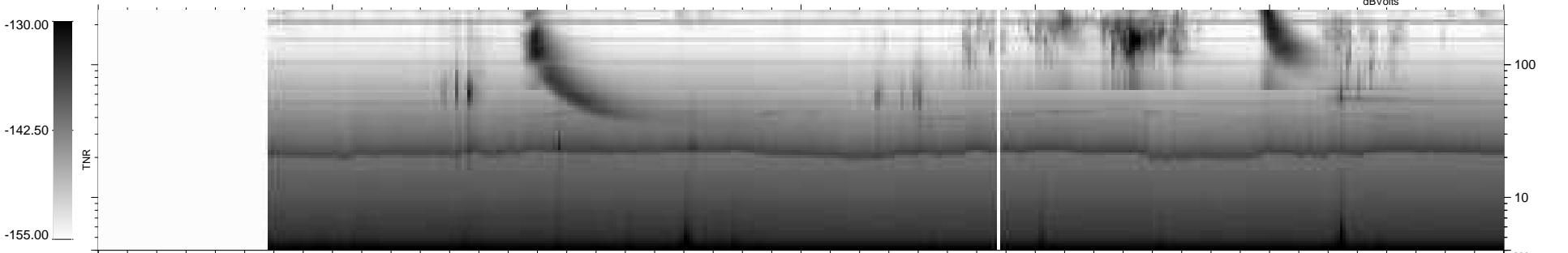
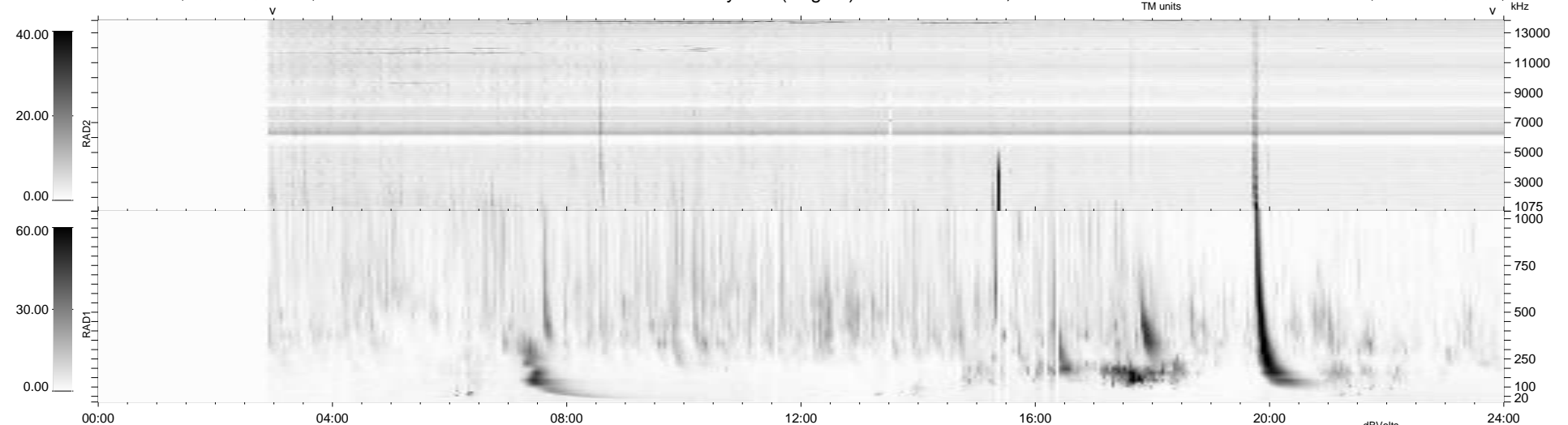
16 bad + 808 good MF/939MF projected (86%) - 115 missing MFs  
Avg interval = 180 secs  
Re = 252.09 (232.10, 98.36, 2.53 GSE)

windlib 2.0b

LZ version = v01

### WIND/WAVES Summary Plot (Page 1) for 02-SEP-2014, DOY = 245

DAILY 2014-09-03 13:46:03  
Re = 252.58 (232.97, 97.53, 3.05 GSE)



RAD2 Antenna Mode SUM/SEP Toggle  
RAD1 Antenna Mode SUM/SEP Toggle  
TNR Antenna Mode Sweep