

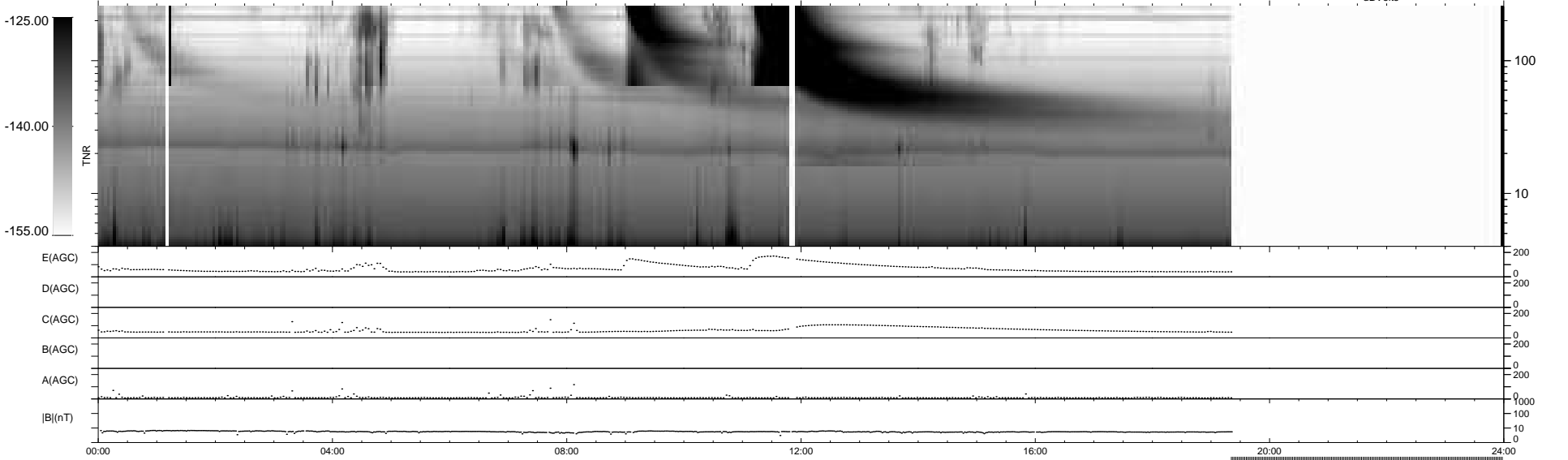
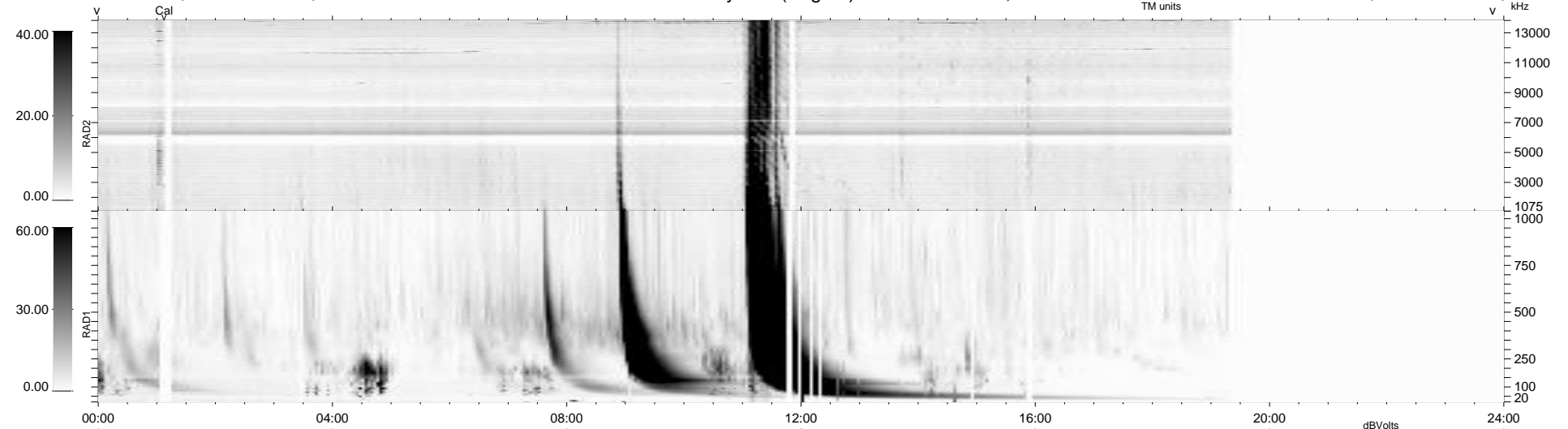
32 bad + 725 good MF/939MF projected (77%) - 182 missing MFs
 Avg interval = 180 secs
 Re = - 251.40 (230.97, 99.26, 1.85 GSE)

windlib 2.0b

LZ version = v01

WIND/WAVES Summary Plot (Page 1) for 01-SEP-2014, DOY = 244

DAILY 2014-09-02 20:46:06
 Re = 252.02 (231.97, 98.47, 2.45 GSE)



```

RAD2
Antenna Ey .....
Mode LIN(1) .....
SUM/SEP SEP .....
Toggle OFF .....

RAD1
Antenna Ex .....
Mode LIS(2/4) .....
SUM/SEP SUM .....
Toggle OFF .....

TNR
Antenna ExEy .....
Mode A-32 .....
Sweep ACE .....
  
```