

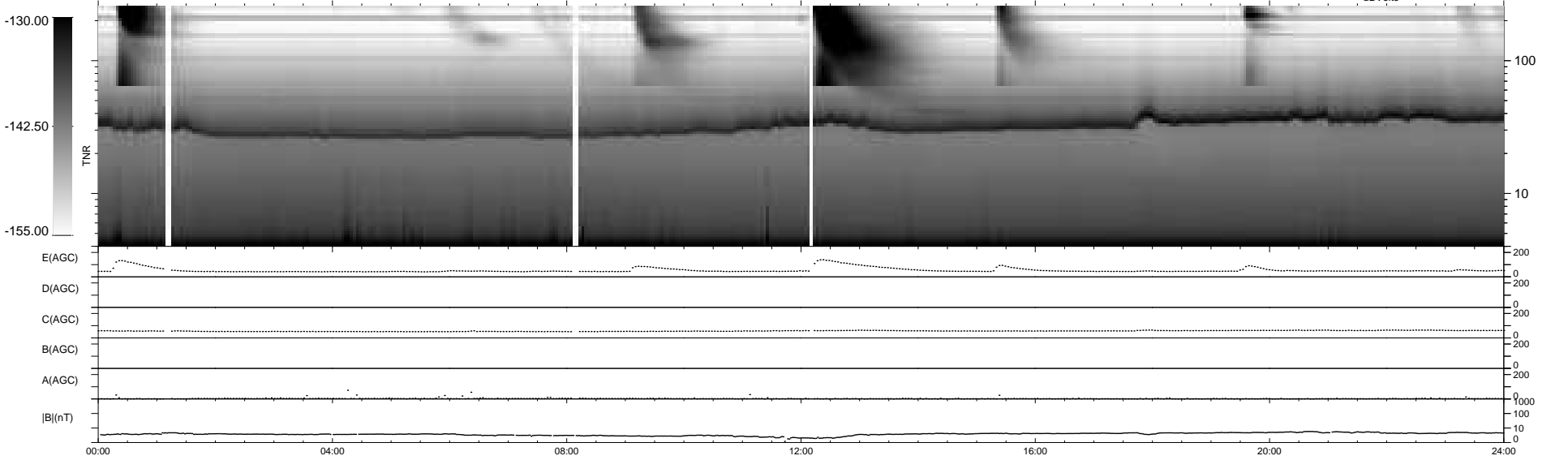
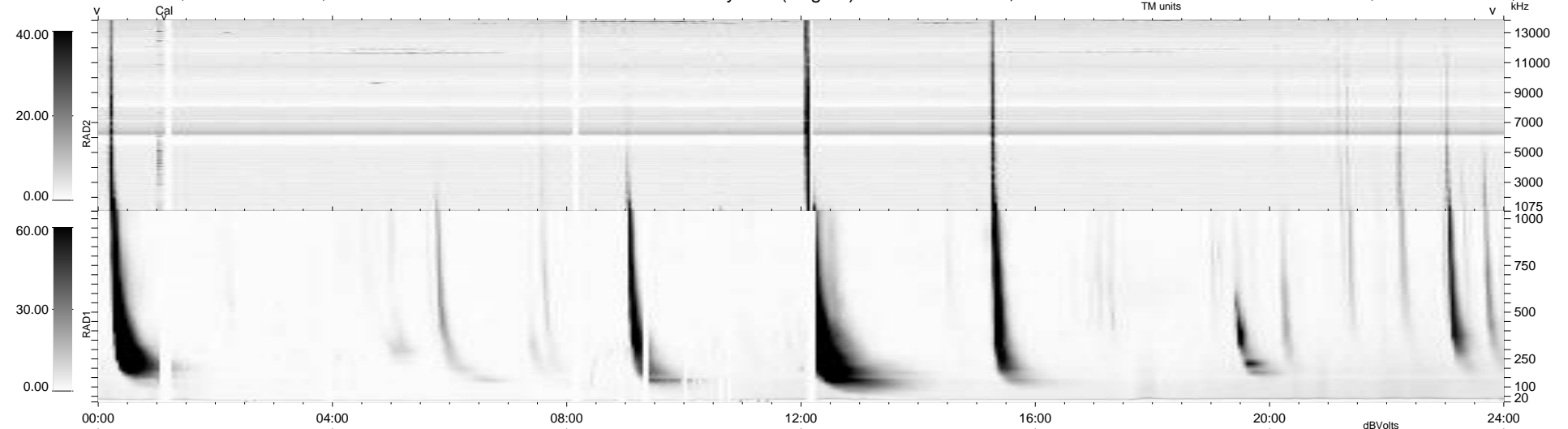
32 bad + 908 good MF/940MF projected (96%) - 0 missing MFs
 Avg interval = 180 secs
 Re = 244.31 (222.57, 100.71, -3.01 GSE)

windlib 2.0b

LZ version = v01

WIND/WAVES Summary Plot (Page 1) for 24-AUG-2014, DOY = 236

DAILY 2014-08-25 13:46:03
 Re = 245.40 (223.66, 100.96, -2.42 GSE)



RAD2
 Antenna Ey
 Mode LIN(1)
 SUM/SEP SEP
 Toggle OFF
 RAD1
 Antenna Ex
 Mode LIS(2,4)
 SUM/SEP SUM
 Toggle OFF
 TNR
 Antenna ExEy
 Mode A-32
 Sweep ACE