

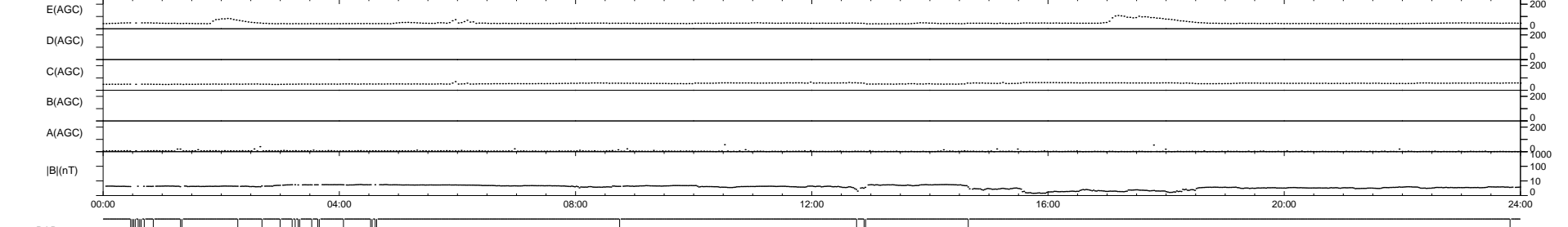
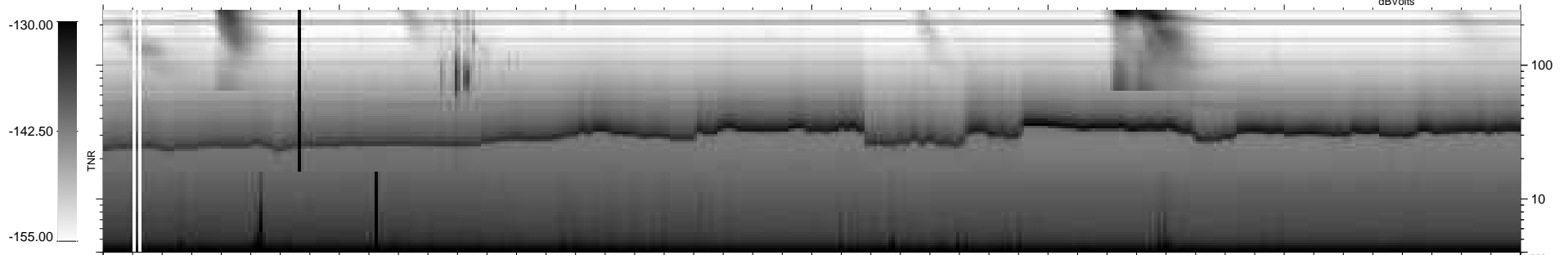
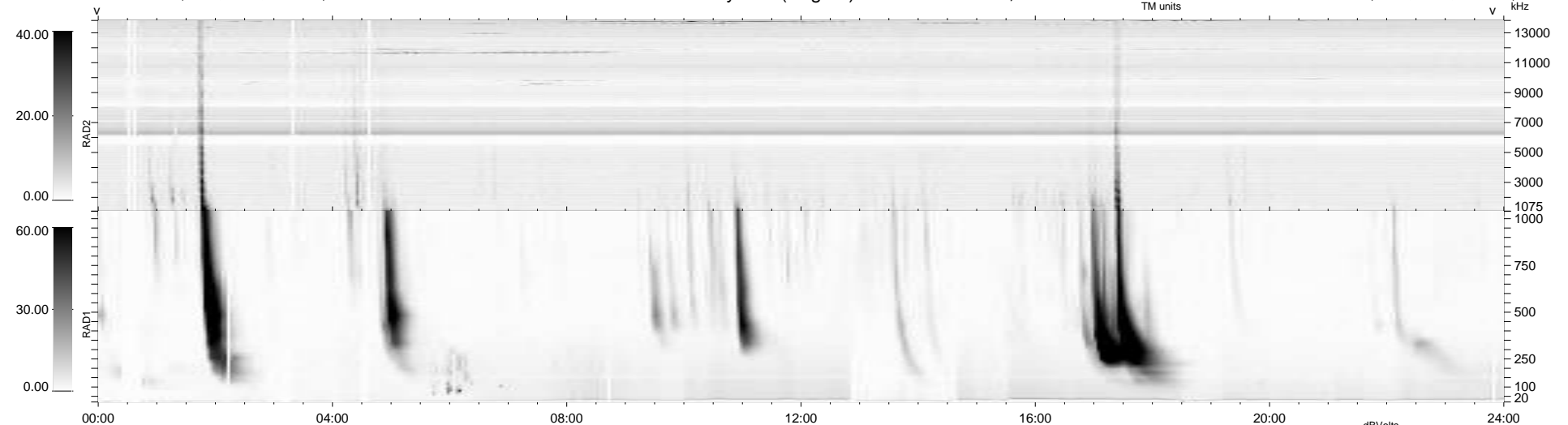
32 bad + 907 good MF/939MF projected (96%) - 0 missing MFs
Avg interval = 180 secs
Re = 243.16 (221.47, 100.33, -3.60 GSE)

windlib 2.0b

LZ version = v02

WIND/WAVES Summary Plot (Page 1) for 23-AUG-2014, DOY = 235

DAILY 2014-08-25 12:46:59
Re = 244.30 (222.56, 100.70, -3.02 GSE)



RAD2
Antenna Ey
Mode LIN(1)
SUM/SEP SEP
Toggle OFF

RAD1
Antenna Ex
Mode LIS(2,4)
SUM/SEP SUM
Toggle OFF

TNR
Antenna ExEy
Mode A-32
Sweep ACE