

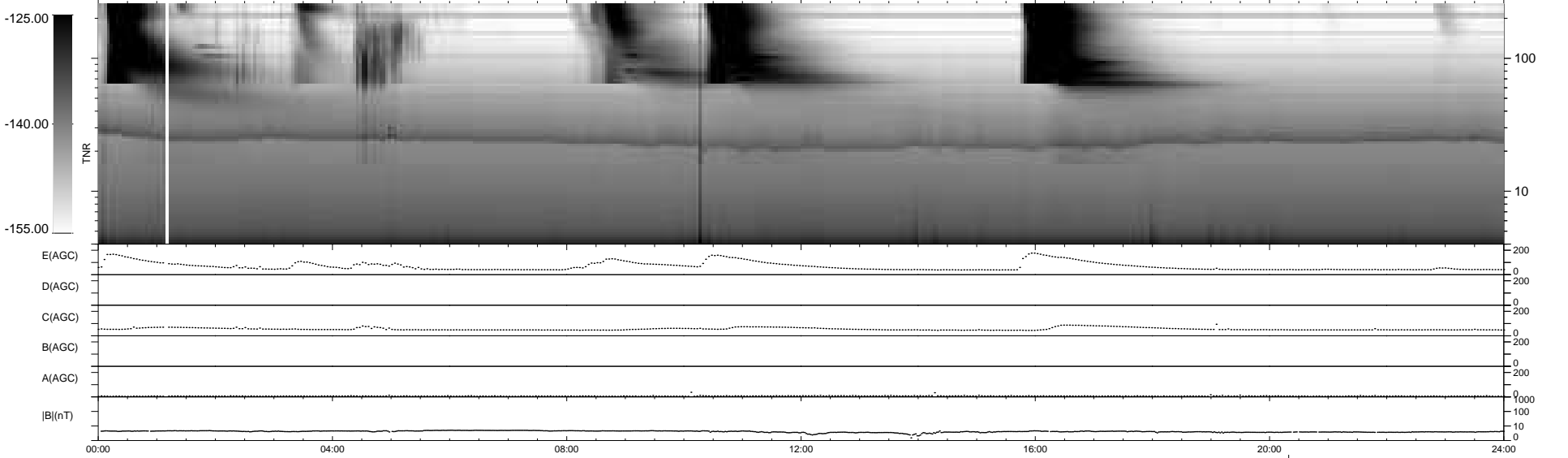
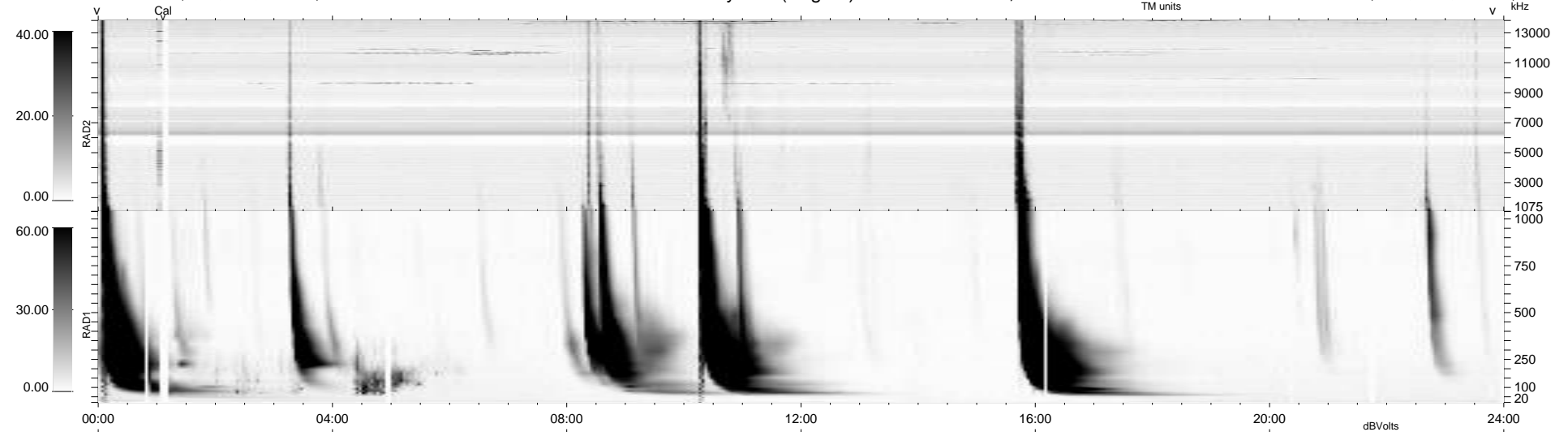
6 bad + 932 good MF/939MF projected (99%) - 1 missing MF
 Avg interval = 180 secs
 Re = 241.97 (220.37, 99.86, -4.19 GSE)

windlib 2.0b

LZ version = v02

WIND/WAVES Summary Plot (Page 1) for 22-AUG-2014, DOY = 234

DAILY 2014-08-25 12:46:03
 Re = 243.16 (221.46, 100.33, -3.61 GSE)



RAD2
 Antenna Ey
 Mode LIN(1)
 SUM/SEP SEP
 Toggle OFF
 RAD1
 Antenna Ex
 Mode LIS(2,4)
 SUM/SEP SUM
 Toggle OFF
 TNR
 Antenna ExEy
 Mode A-32
 Sweep ACE