

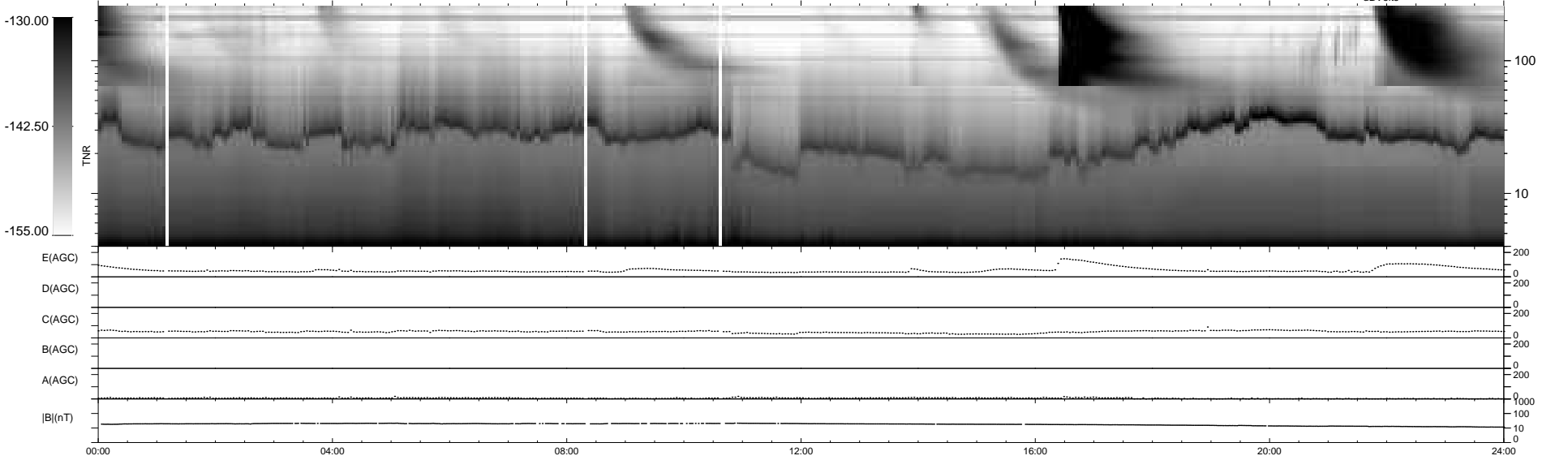
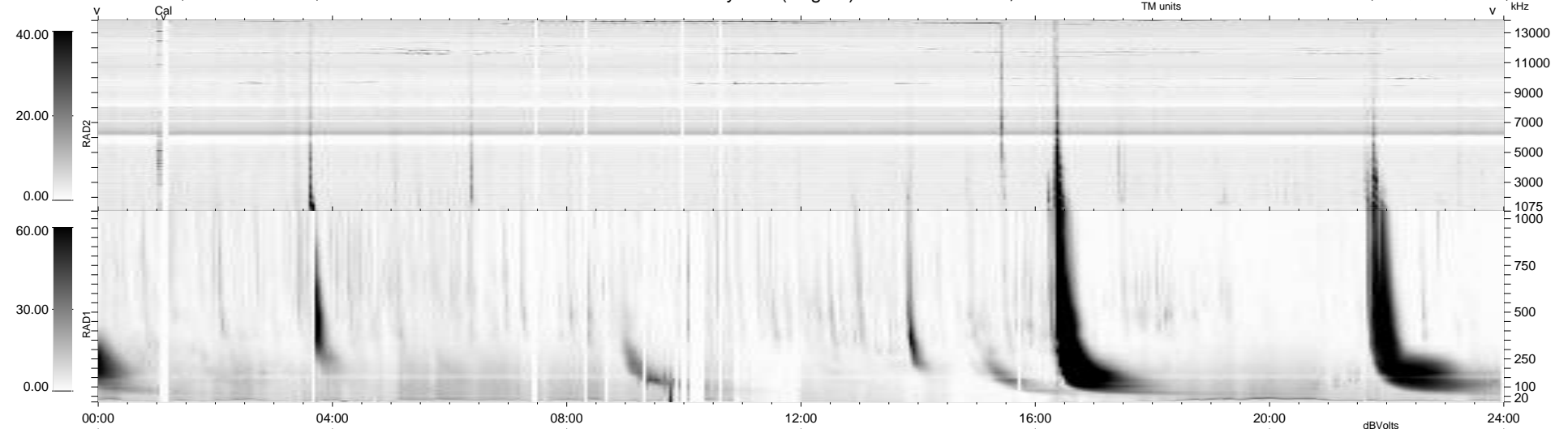
41 bad + 898 good MF/939MF projected (95%) - 0 missing MFs
 Avg interval = 180 secs
 Re = -239.48 (218.17, 98.61, -5.34 GSE)

windlib 2.0b

LZ version = v01

WIND/WAVES Summary Plot (Page 1) for 20-AUG-2014, DOY = 232

DAILY 2014-08-22 13:46:05
 Re = 240.73 (219.26, 99.28, -4.77 GSE)



RAD2
 Antenna Ey
 Mode LIN(1)
 SUM/SEP SEP
 Toggle OFF
 RAD1
 Antenna Ex
 Mode LIS(2,4)
 SUM/SEP SUM
 Toggle OFF
 TNR
 Antenna ExEy
 Mode A-32
 Sweep ACE