

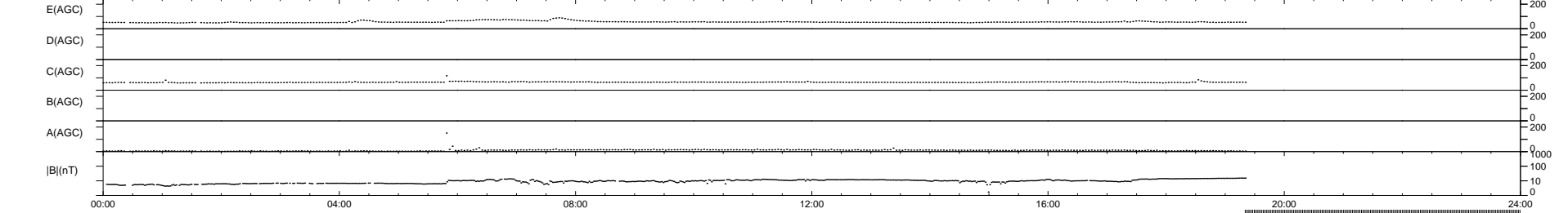
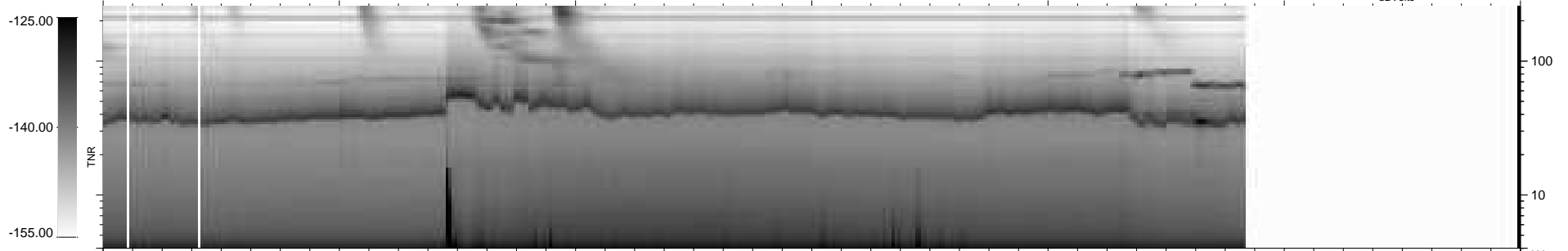
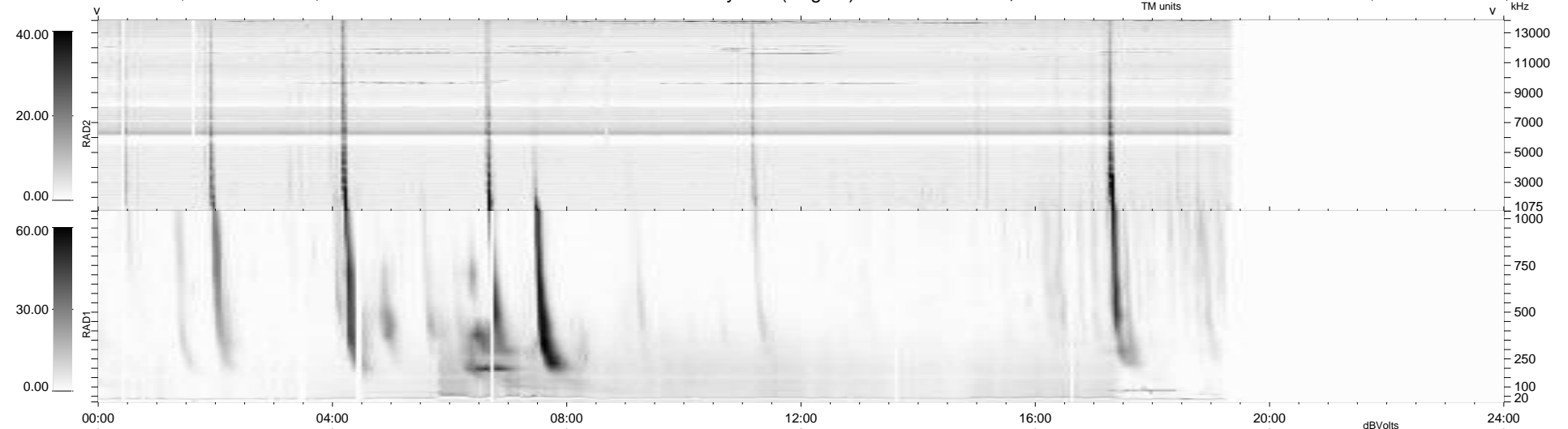
32 bad + 724 good MF/939MF projected (77%) - 183 missing MFs
 Avg interval = 180 secs
 Re = -238.18 (217.08, 97.84, -5.90 GSE)

windlib 2.0b

LZ version = v01

WIND/WAVES Summary Plot (Page 1) for 19-AUG-2014, DOY = 231

DAILY 2014-08-21 14:46:03
 Re = 239.47 (218.16, 98.60, -5.34 GSE)



```

RAD2
Antenna Ey .....
Mode LIN(1) .....
SUM/SEP SEP .....
Toggle OFF .....

RAD1
Antenna Ex .....
Mode LIS(2,4) .....
SUM/SEP SUM .....
Toggle OFF .....

TNR
Antenna ExEy .....
Mode A-32 .....
Sweep ACE .....
  
```