

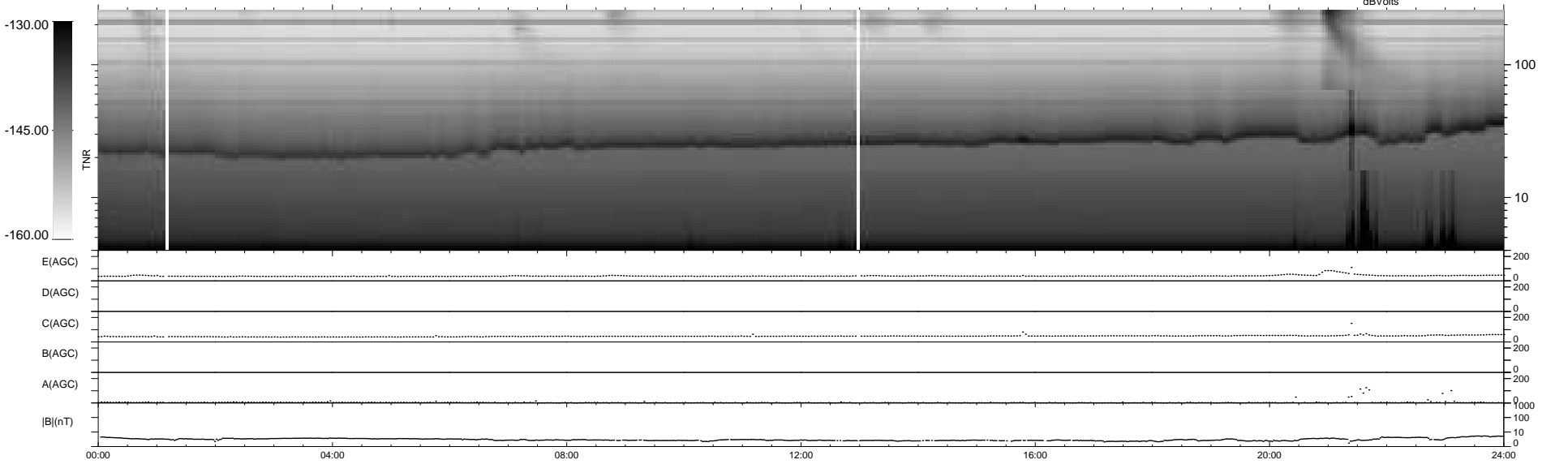
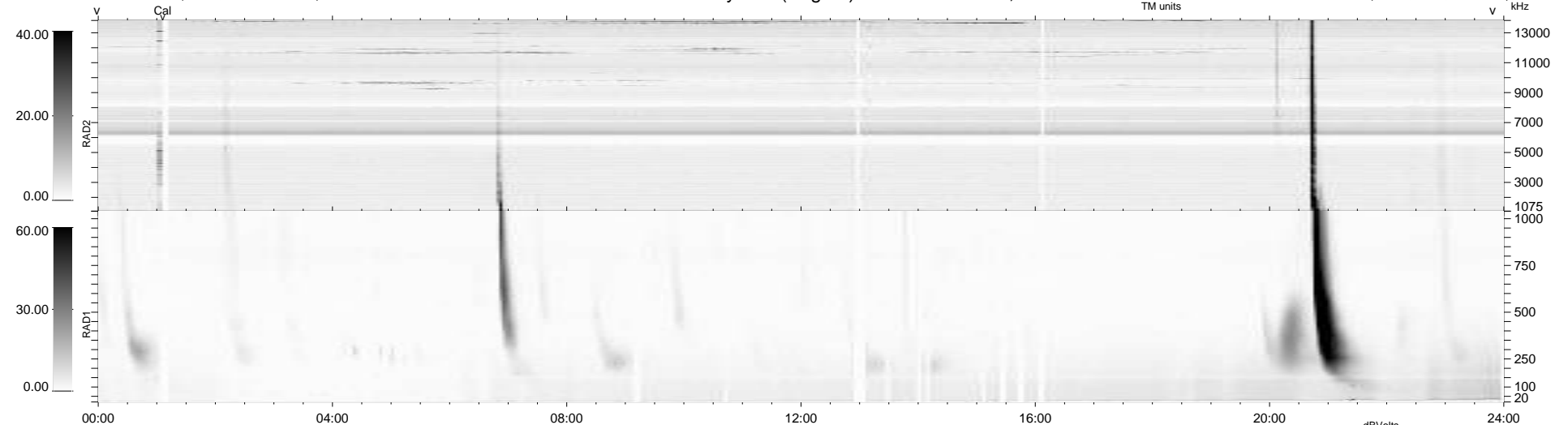
39 bad + 900 good MF/939MF projected (95%) - 0 missing MFs
 Avg interval = 180 secs
 Re = 234.23 (213.96, 95.03, -7.52 GSE)

windlib 2.0b

LZ version = v01

WIND/WAVES Summary Plot (Page 1) for 16-AUG-2014, DOY = 228

DAILY 2014-08-17 21:46:03
 Re = 235.55 (214.96, 96.05, -6.99 GSE)



```

RAD2
Antenna Ey .....
Mode LIN(1) .....
SUM/SEP SEP .....
Toggle OFF .....

RAD1
Antenna Ex .....
Mode LIS(2,4) .....
SUM/SEP SUM .....
Toggle OFF .....

TNR
Antenna ExEy .....
Mode A-32 .....
Sweep ACE .....
  
```