

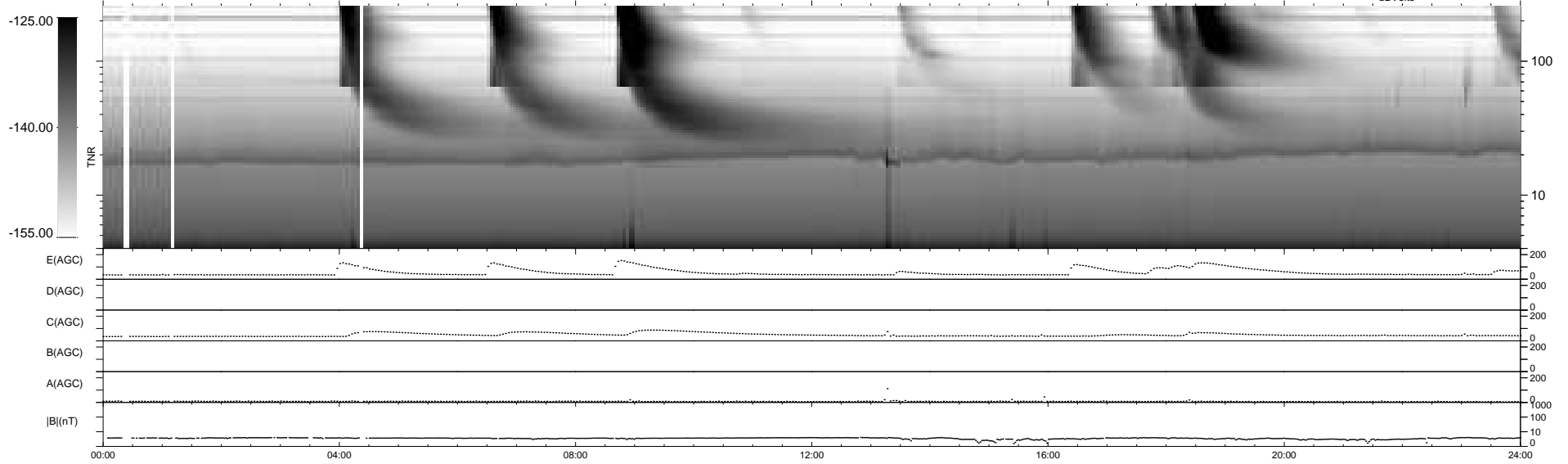
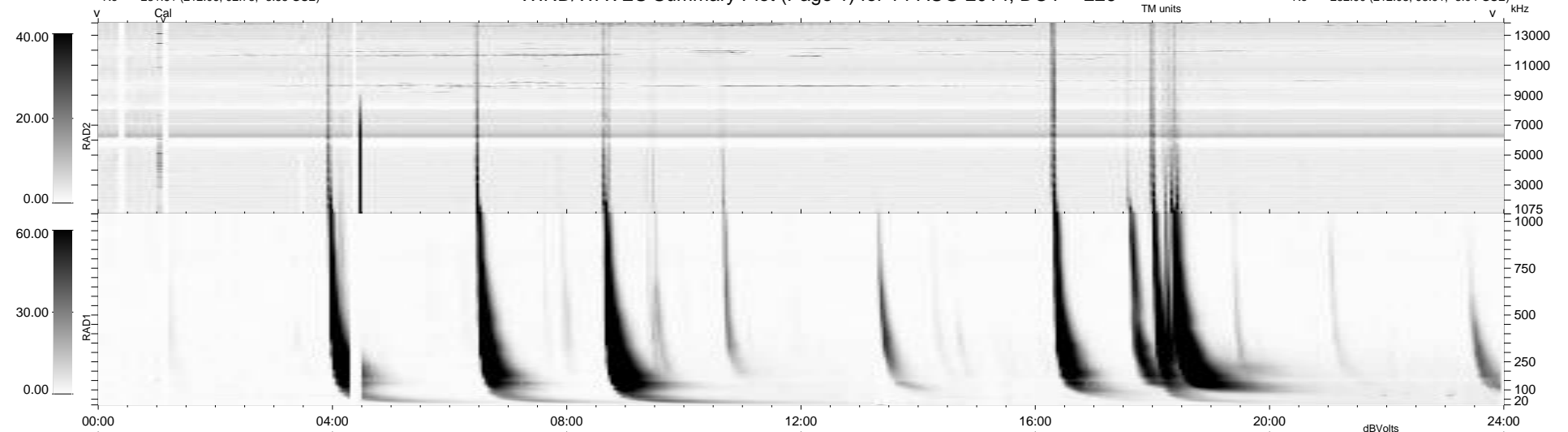
34 bad + 905 good MF/939MF projected (96%) - 0 missing MFs
Avg interval = 180 secs
Re = 231.61 (212.06, 92.73, -8.55 GSE)

windlib 2.0b

LZ version = v01

WIND/WAVES Summary Plot (Page 1) for 14-AUG-2014, DOY = 226

DAILY 2014-08-15 13:46:05
Re = 232.90 (212.98, 93.91, -8.04 GSE)



RAD2
Antenna Ey
Mode LIN(1)
SUM/SEP SEP
Toggle OFF

RAD1
Antenna
Mode
SUM/SEP
Toggle

TNR
Antenna ExEy
Mode A-32
Sweep ACE