

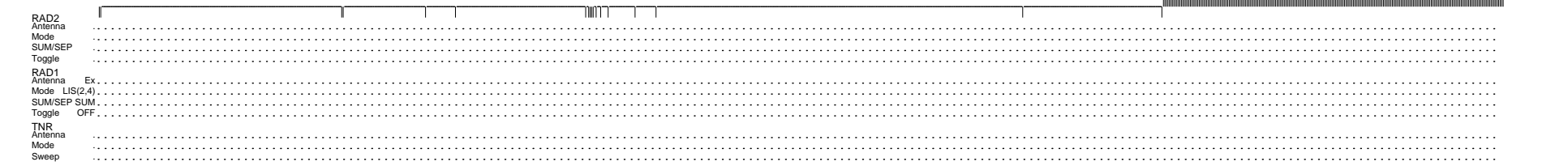
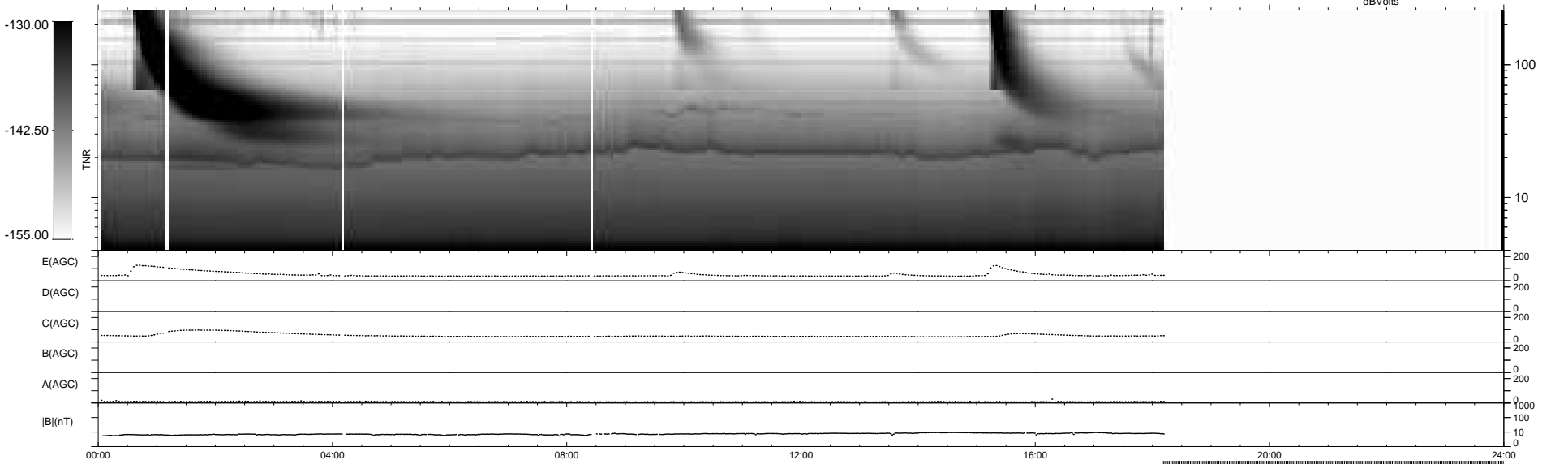
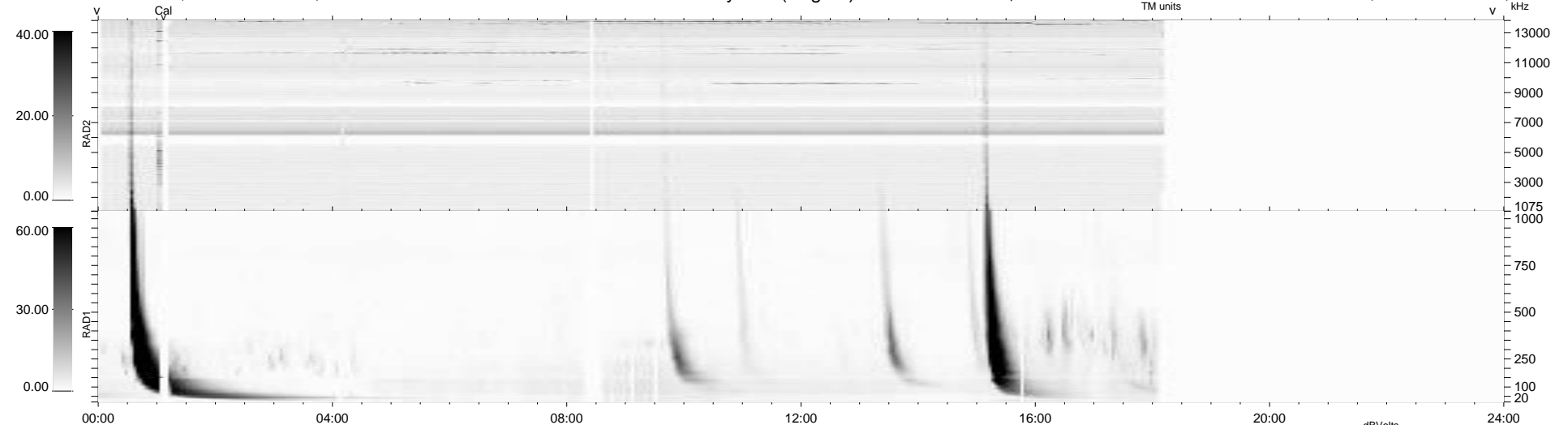
18 bad + 693 good MF/939MF projected (73%) - 228 missing MFs
Avg interval = 180 secs
Re = - 229.06 (210.39, 90.07, -9.55 GSE)

windlib 2.0b

LZ version = v01

WIND/WAVES Summary Plot (Page 1) for 12-AUG-2014, DOY = 224

DAILY 2014-08-14 22:46:03
Re = 230.31 (211.19, 91.44, -9.06 GSE)



RAD2
Antenna
Mode
SUM/SEP
Toggle
RAD1
Antenna Ex
Mode LIS(2/4)
SUM/SEP SUM
Toggle OFF
TNR
Antenna
Mode
Sweep