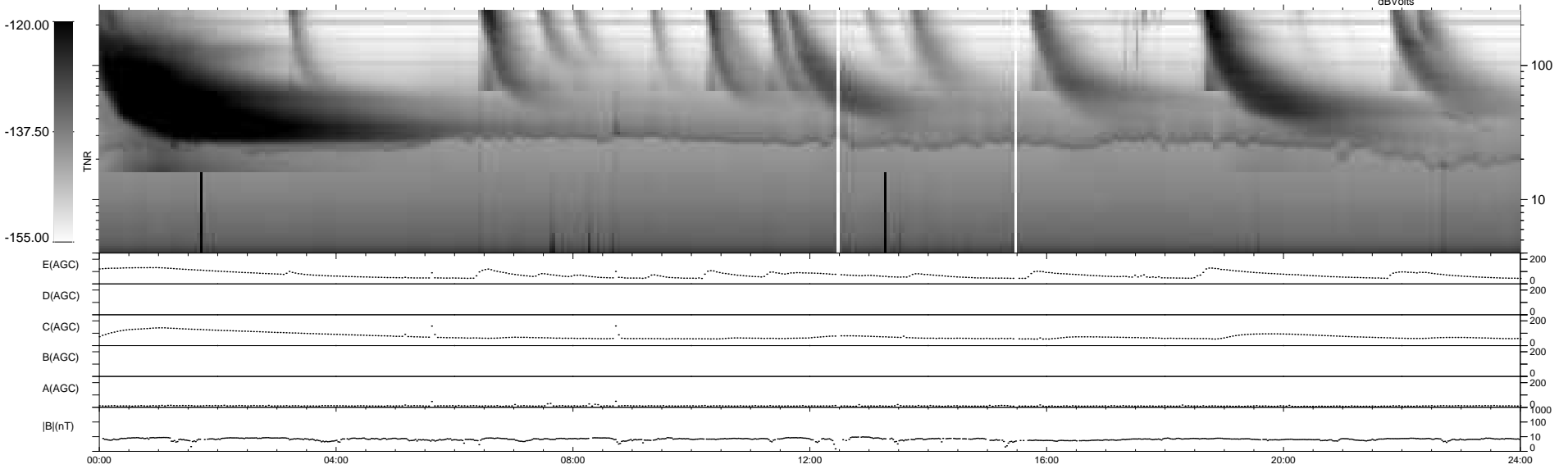
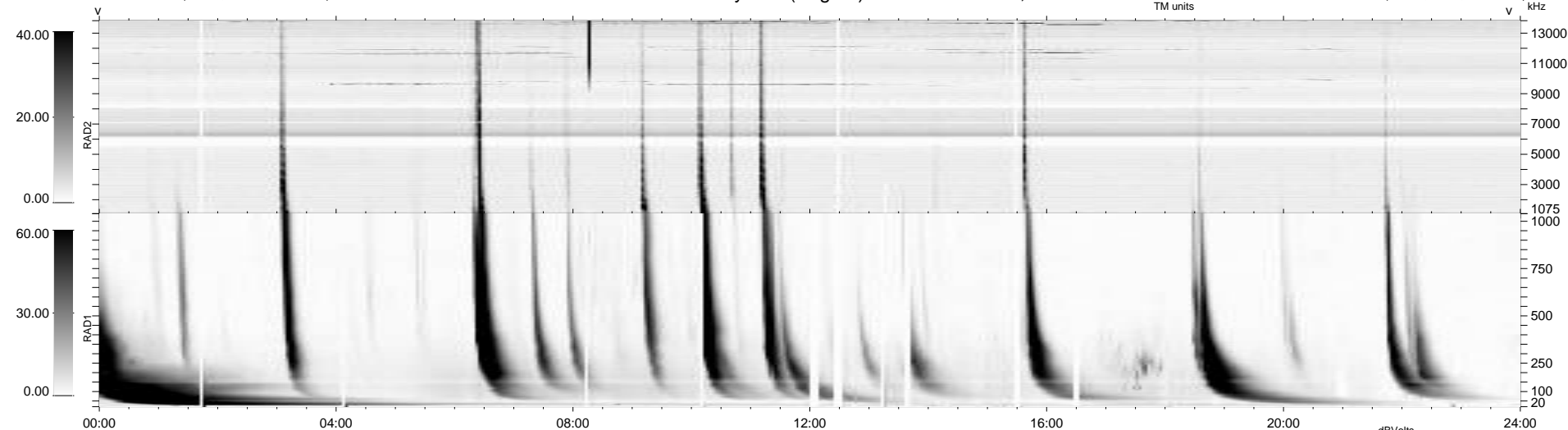


37 bad + 902 good MF/939MF projected (96%) - 0 missing MFs
 Avg interval = 180 secs
 Re = -227.83 (209.66, 88.60, -10.03 GSE)

windlib 2.0b LZ version = v01
 DAILY 2014-08-12 13:46:04
 Re = 229.05 (210.39, 90.06, -9.55 GSE)

WIND/WAVES Summary Plot (Page 1) for 11-AUG-2014, DOY = 223



RAD2
 Antenna Ey
 Mode LIN(1)
 SUM/SEP SEP
 Toggle OFF

RAD1
 Antenna Ex
 Mode LIS(2,4)
 SUM/SEP SUM
 Toggle OFF

TNR
 Antenna ExEy
 Mode A-32
 Sweep ACE