

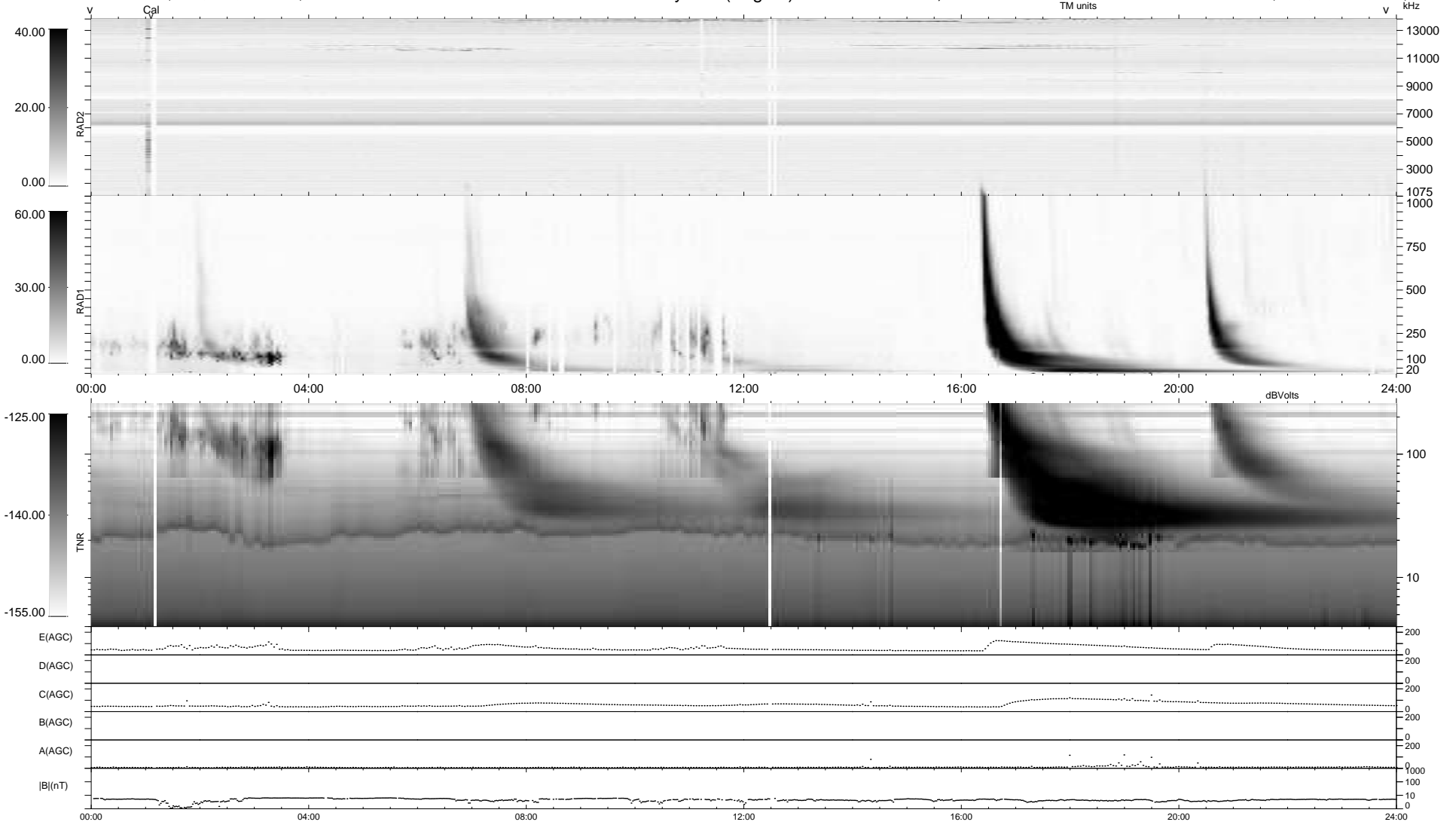
42 bad + 897 good MF/939MF projected (95%) - 0 missing MFs
 Avg interval = 180 secs
 Re = -224.30 (207.87, 83.48, -11.42 GSE)

windlib 2.0b

LZ version = v01

WIND/WAVES Summary Plot (Page 1) for 08-AUG-2014, DOY = 220

DAILY 2014-08-09 13:46:04
 Re = 225.44 (208.40, 85.30, -10.97 GSE)



RAD2
 Antenna Ey
 Mode LIN(1)
 SUM/SEP SEP
 Toggle OFF

RAD1
 Antenna Ex
 Mode LIS(2,4)
 SUM/SEP SUM
 Toggle OFF

TNR
 Antenna ExEy
 Mode A-32
 Sweep ACE