

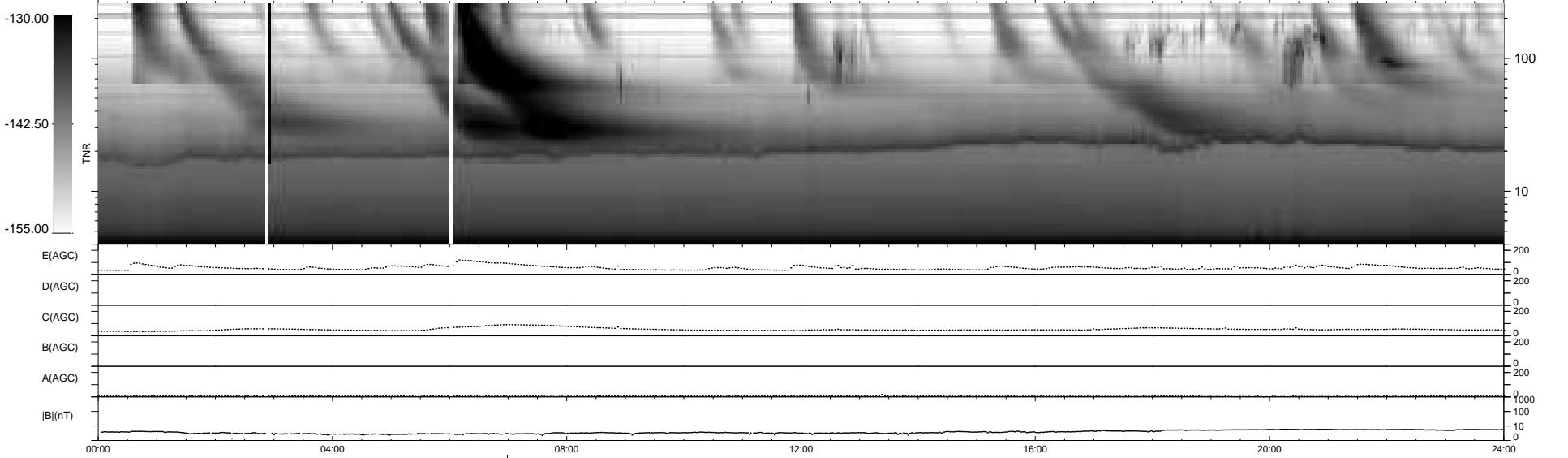
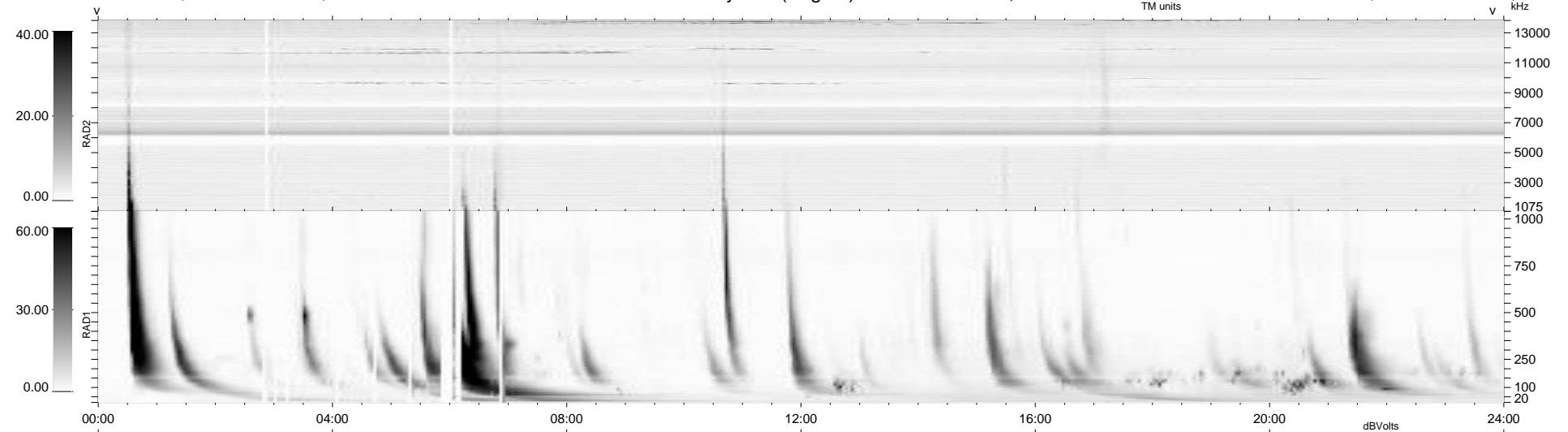
33 bad + 905 good MF/939MF projected (96%) - 1 missing MF  
 Avg interval = 180 secs  
 Re = 223.17 (207.41, 81.52, -11.87 GSE)

windlib 2.0b

LZ version = v02

### WIND/WAVES Summary Plot (Page 1) for 07-AUG-2014, DOY = 219

DAILY 2014-08-12 10:46:04  
 Re = 224.29 (207.87, 83.47, -11.43 GSE)



RAD2  
 Antenna Ey  
 Mode LIN(1)  
 SUM/SEP SEP  
 Toggle OFF

RAD1  
 Antenna Ex  
 Mode LIS(2,4)  
 SUM/SEP SUM  
 Toggle OFF

TNR  
 Antenna ExEy  
 Mode A-32  
 Sweep ACE