

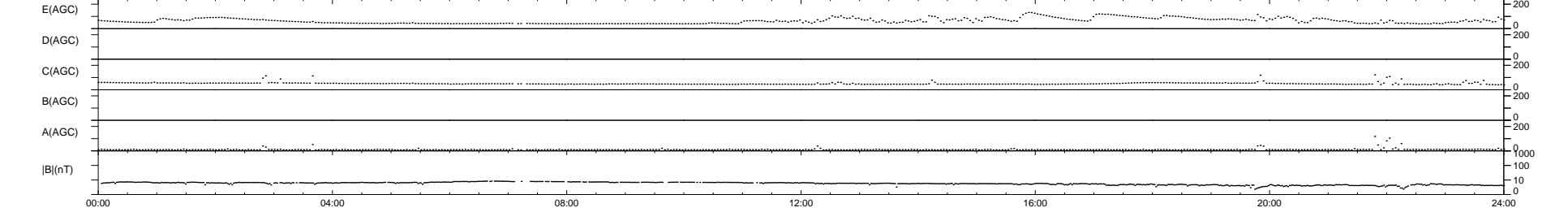
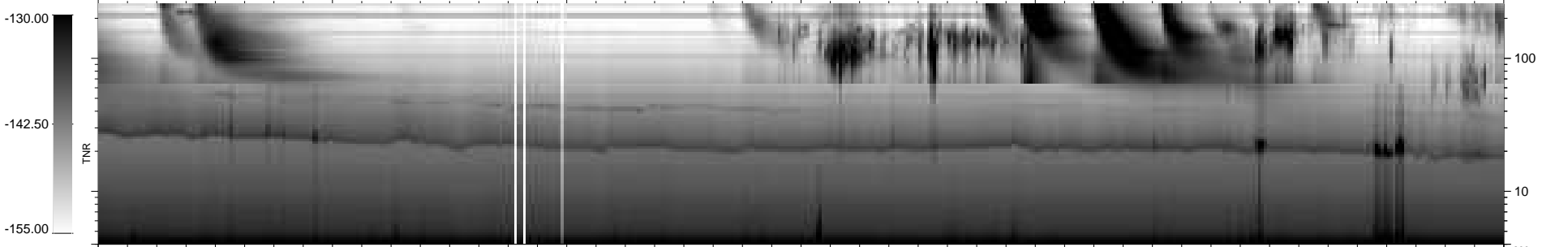
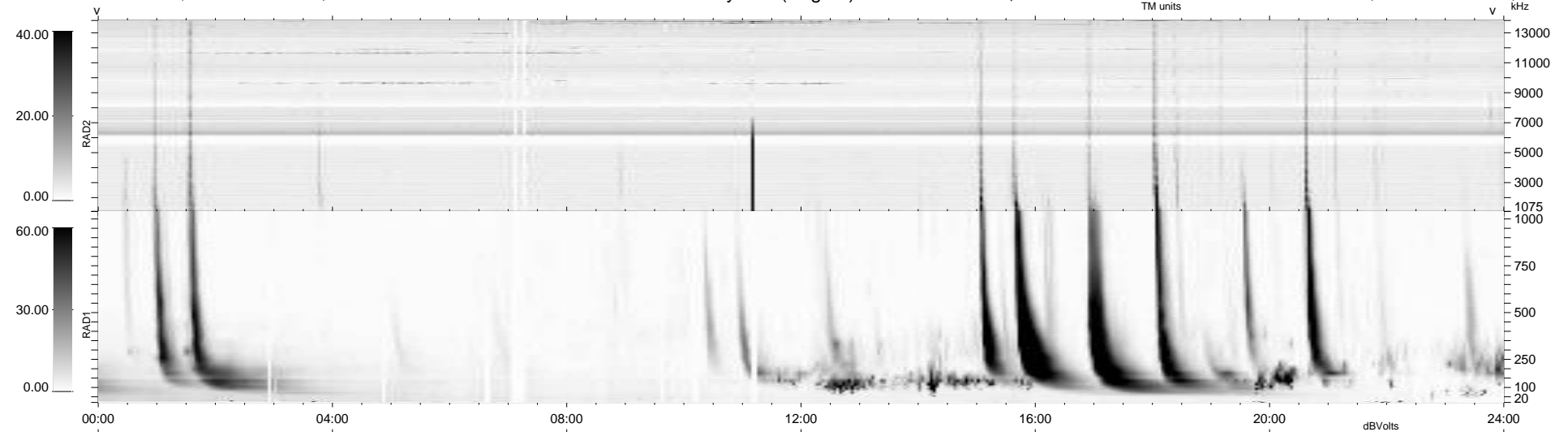
35 bad + 904 good MF/939MF projected (96%) - 0 missing MFs
 Avg interval = 180 secs
 Re = 220.95 (206.63, 77.20, -12.71 GSE)

windlib 2.0b

LZ version = v01

WIND/WAVES Summary Plot (Page 1) for 05-AUG-2014, DOY = 217

DAILY 2014-08-07 13:46:59
 Re = 222.04 (206.99, 79.41, -12.30 GSE)



RAD2
 Antenna Ey
 Mode LIN(1)
 SUM/SEP SEP
 Toggle OFF

RAD1
 Antenna Ex
 Mode LIS(2,4)
 SUM/SEP SUM
 Toggle OFF

TNR
 Antenna ExEy
 Mode A-32
 Sweep ACE