

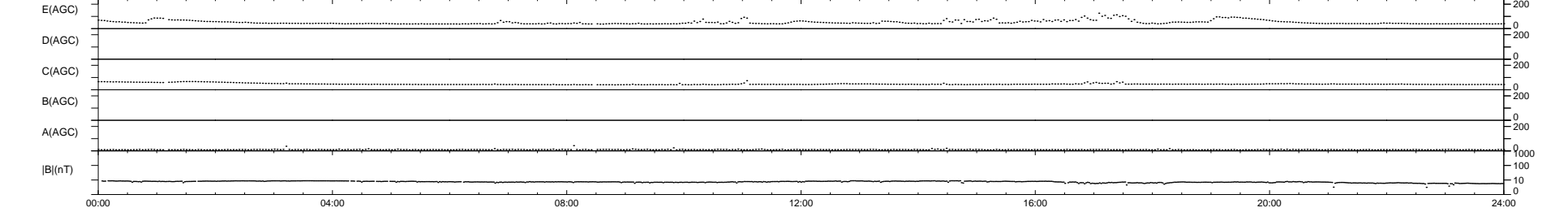
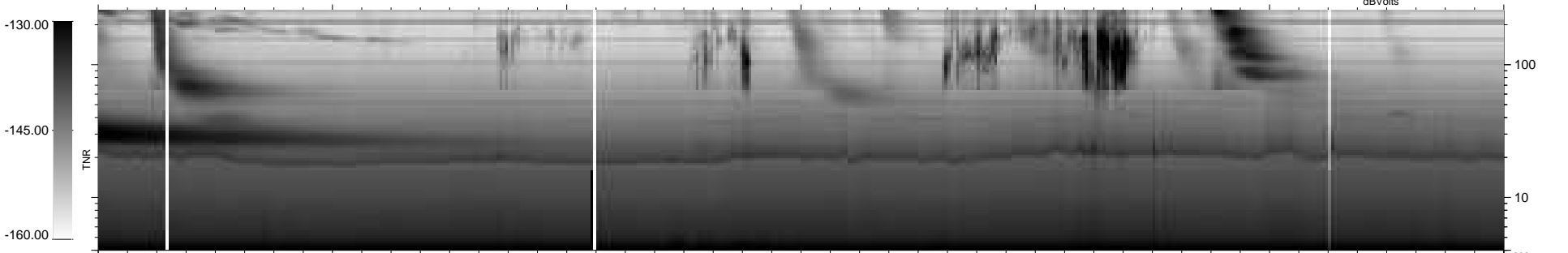
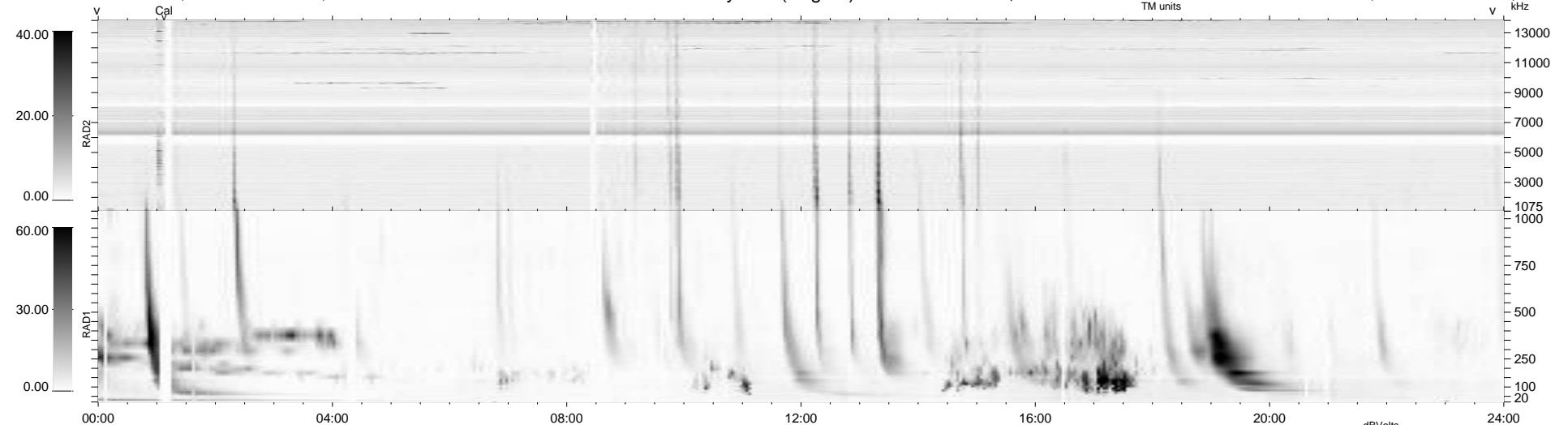
28 bad + 911 good MF/939MF projected (97%) - 0 missing MFs  
 Avg interval = 180 secs  
 Re = 217.67 (205.73, 69.73, -13.86 GSE)

windlib 2.0b

LZ version = v01

### WIND/WAVES Summary Plot (Page 1) for 02-AUG-2014, DOY = 214

DAILY 2014-08-03 04:46:03  
 Re = 218.75 (206.00, 72.33, -13.50 GSE)



```

RAD2
Antenna Ey .....
Mode LIN(1) .....
SUM/SEP SEP .....
Toggle OFF .....

RAD1
Antenna Ex .....
Mode LIS(2,4) .....
SUM/SEP SUM .....
Toggle OFF .....

TNR
Antenna ExEy .....
Mode A-32 .....
Sweep ACE .....
  
```