

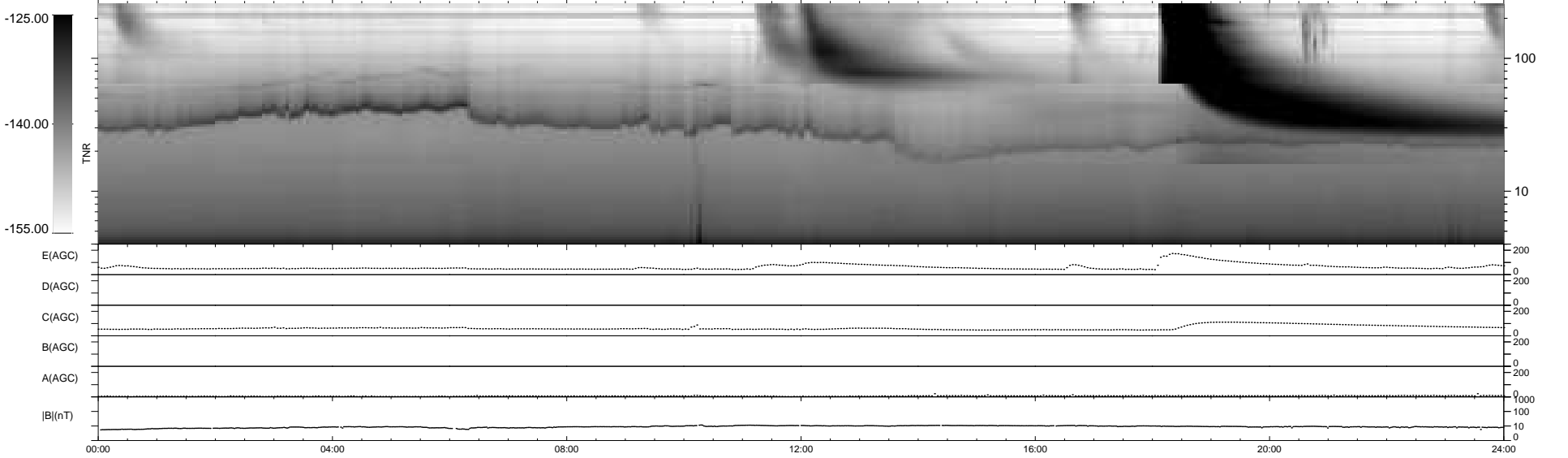
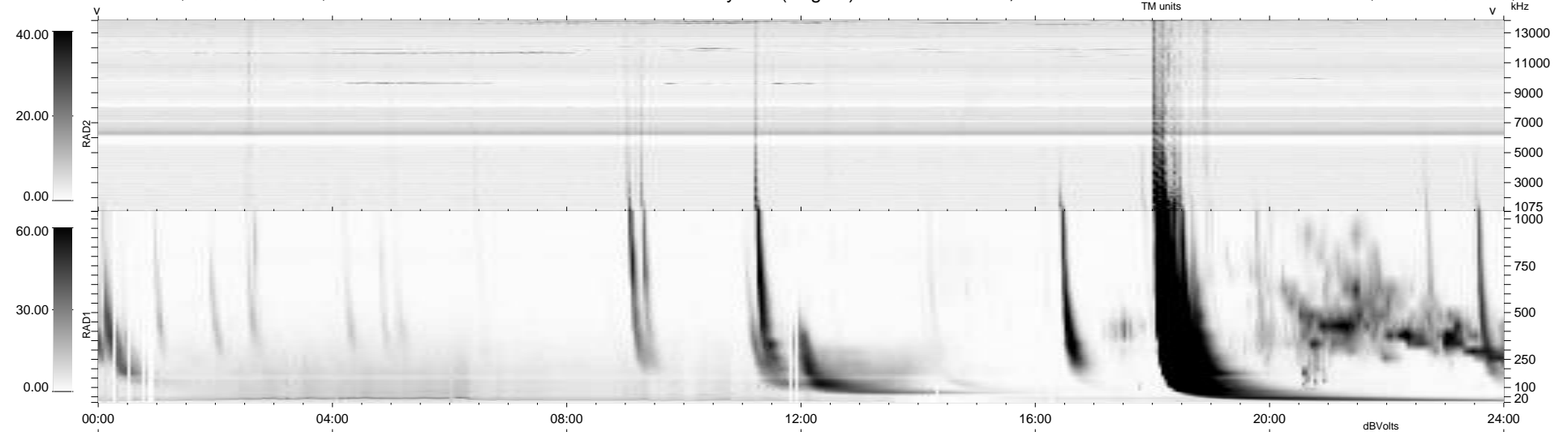
16 bad + 924 good MF/940MF projected (98%) - 0 missing MFs
 Avg interval = 180 secs
 Re = 216.59 (205.48, 66.99, -14.21 GSE)

windlib 2.0b

LZ version = v01

WIND/WAVES Summary Plot (Page 1) for 01-AUG-2014, DOY = 213

DAILY 2014-08-02 14:46:04
 Re = 217.66 (205.73, 69.71, -13.86 GSE)



RAD2 Antenna Ey
 Mode LIN(1)
 SUM/SEP SEP
 Toggle OFF
 RAD1 Antenna Ex
 Mode LIS(2,4)
 SUM/SEP SUM
 Toggle OFF
 TNR Antenna ExEy
 Mode A-32
 Sweep ACE