

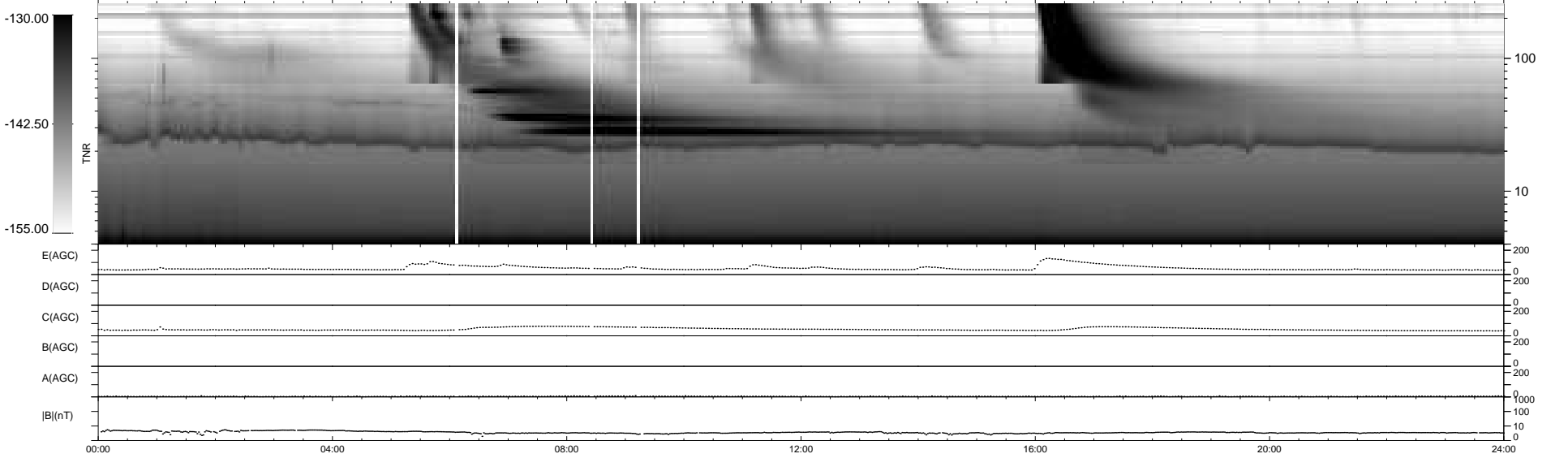
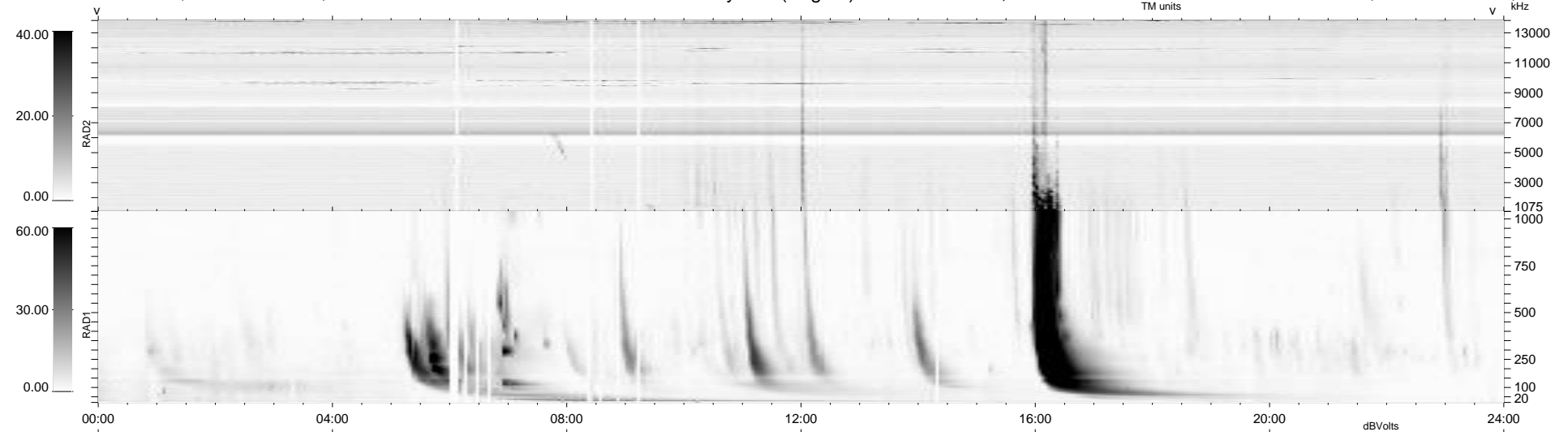
36 bad + 903 good MF/939MF projected (96%) - 0 missing MFs  
 Avg interval = 180 secs  
 Re = 214.44 (205.00, 61.17, -14.83 GSE)

windlib 2.0b

LZ version = v01

### WIND/WAVES Summary Plot (Page 1) for 30-JUL-2014, DOY = 211

DAILY 2014-07-31 11:46:04  
 Re = 215.51 (205.23, 64.11, -14.53 GSE)



```

RAD2
Antenna Ey .....
Mode LIN(1) .....
SUM/SEP SEP .....
Toggle OFF .....

RAD1
Antenna Ex .....
Mode LIS(2,4) .....
SUM/SEP SUM .....
Toggle OFF .....

TNR
Antenna ExEy .....
Mode A-32 .....
Sweep ACE .....
  
```