

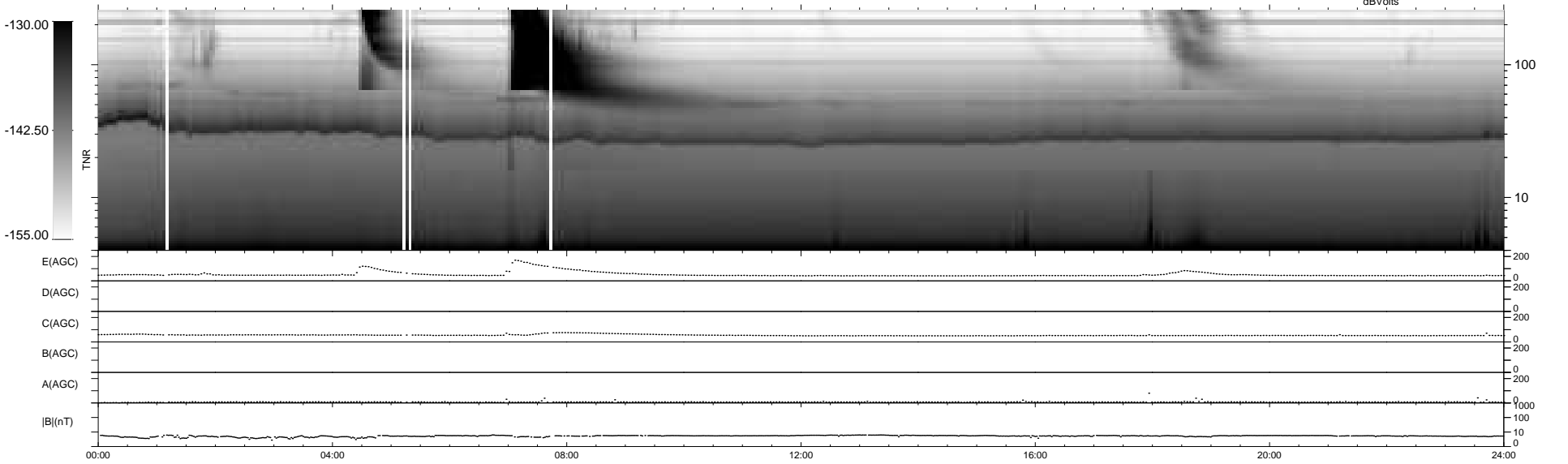
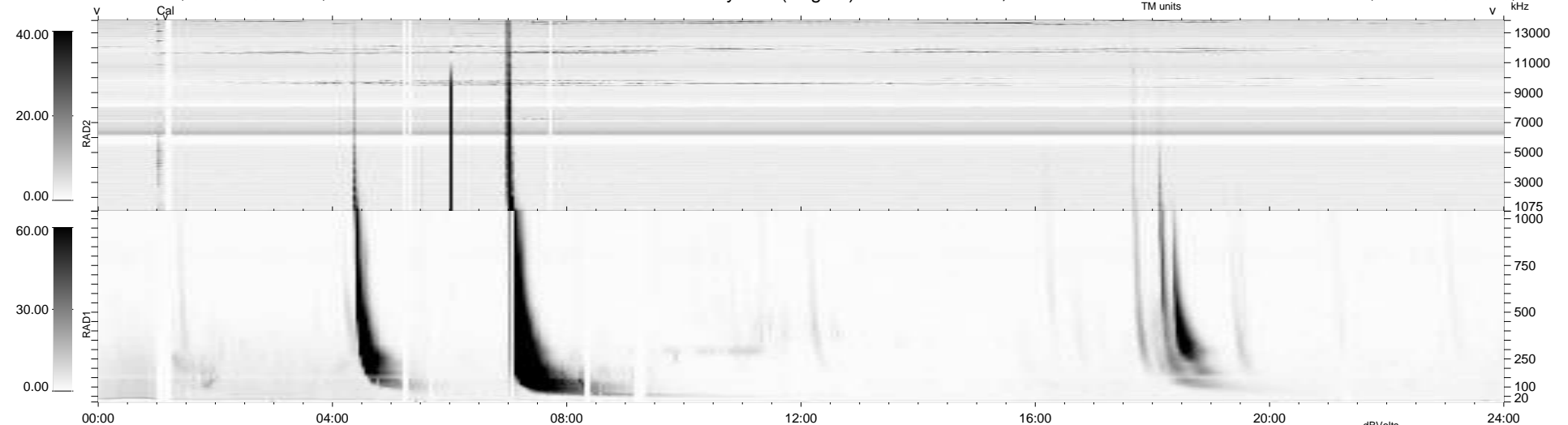
40 bad + 900 good MF/940MF projected (95%) - 0 missing MFs  
 Avg interval = 180 secs  
 Re = 209.31 (203.79, 45.01, -15.95 GSE)

windlib 2.0b

LZ version = v01

### WIND/WAVES Summary Plot (Page 1) for 25-JUL-2014, DOY = 206

DAILY 2014-07-26 22:46:03  
 Re = 210.29 (204.04, 48.37, -15.78 GSE)



```

RAD2
Antenna Ey
Mode LIN(1)
SUM/SEP SEP
Toggle OFF

RAD1
Antenna Ex
Mode LIS(2,4)
SUM/SEP SUM
Toggle OFF

TNR
Antenna ExEy
Mode A-32
Sweep ACE
  
```