

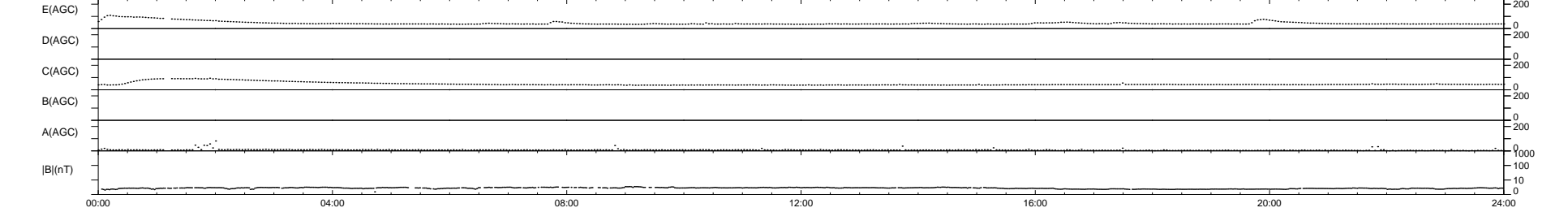
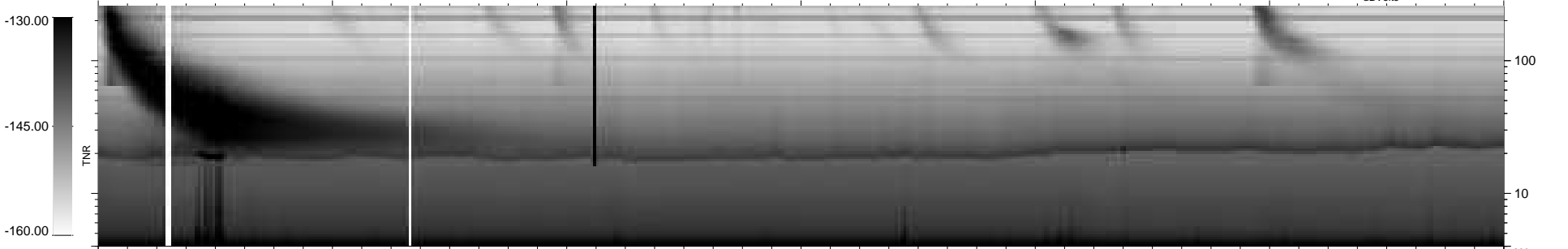
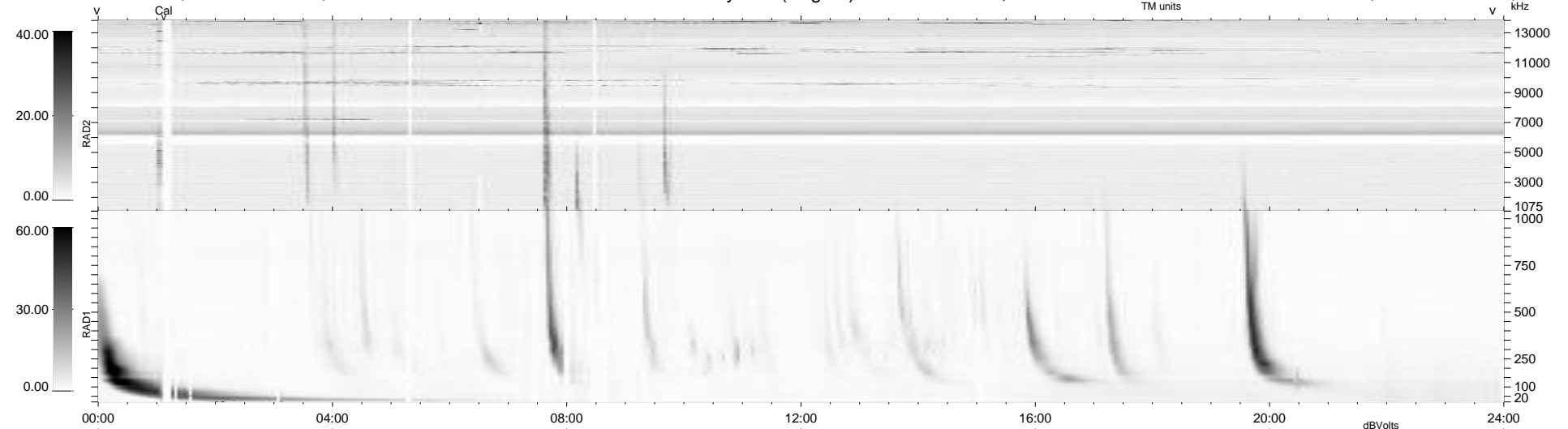
39 bad + 900 good MF/939MF projected (95%) - 0 missing MFs
 Avg interval = 180 secs
 Re = 204.32 (202.26, 23.90, -16.39 GSE)

windlib 2.0b

LZ version = v02

WIND/WAVES Summary Plot (Page 1) for 19-JUL-2014, DOY = 200

DAILY 2014-07-22 11:46:04
 Re = 205.01 (202.50, 27.44, -16.39 GSE)



```

RAD2
Antenna Ey .....
Mode LIN(1) .....
SUM/SEP SEP .....
Toggle OFF .....

RAD1
Antenna Ex .....
Mode LIS(2,4) .....
SUM/SEP SUM .....
Toggle OFF .....

TNR
Antenna ExEy .....
Mode A-32 .....
Sweep ACE .....
  
```