

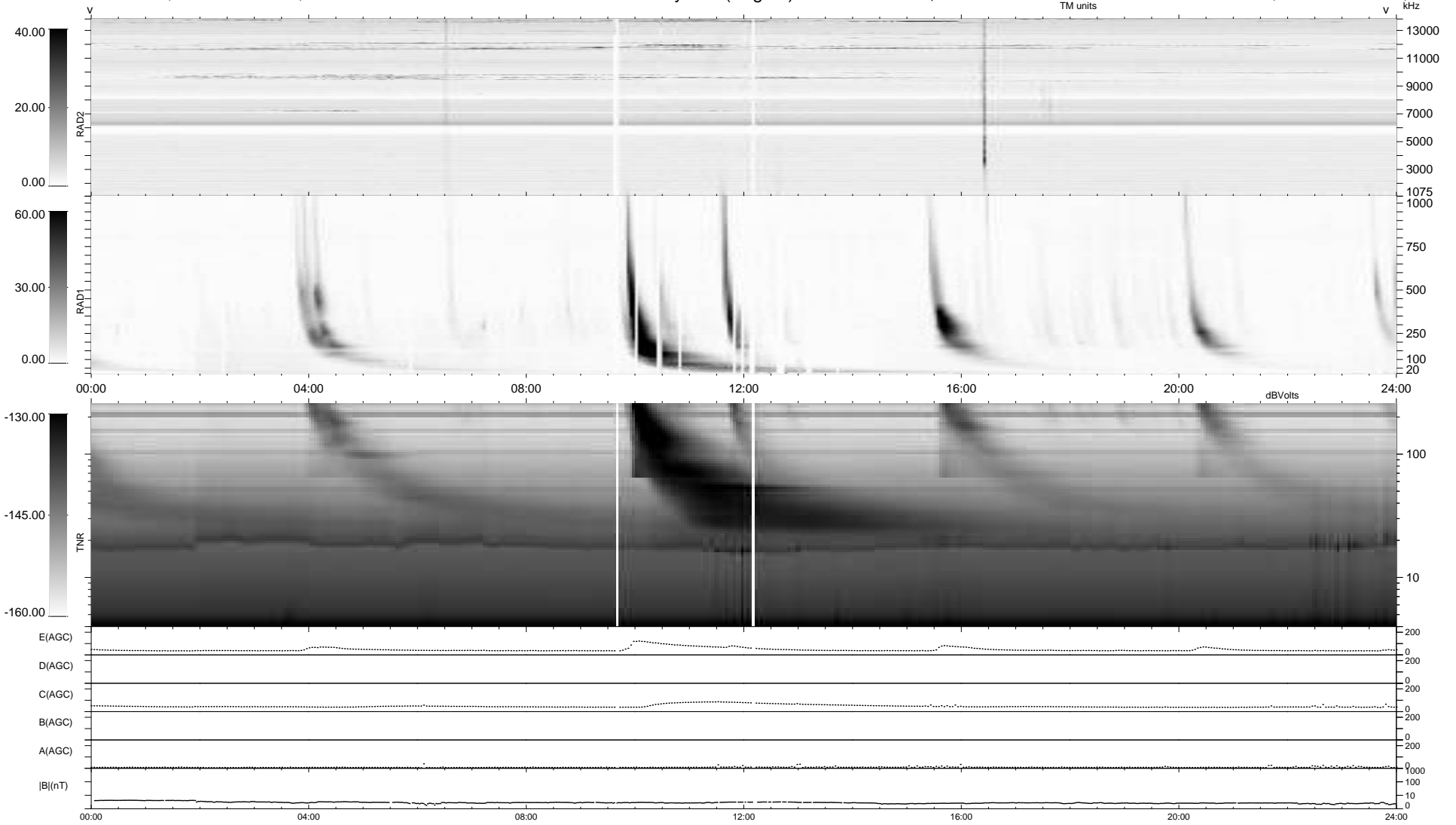
30 bad + 909 good MF/939MF projected (96%) - 0 missing MFs  
 Avg interval = 180 secs  
 Re = 203.71 (202.03, 20.33, -16.36 GSE)

windlib 2.0b

LZ version = v01

### WIND/WAVES Summary Plot (Page 1) for 18-JUL-2014, DOY = 199

DAILY 2014-07-19 22:46:04  
 Re = 204.32 (202.25, 23.87, -16.39 GSE)



```

RAD2
Antenna Ey .....
Mode LIN(1) .....
SUM/SEP SEP .....
Toggle OFF .....

RAD1
Antenna Ex .....
Mode LIS(2,4) .....
SUM/SEP SUM .....
Toggle OFF .....

TNR
Antenna ExEy .....
Mode A-32 .....
Sweep ACE .....
  
```