

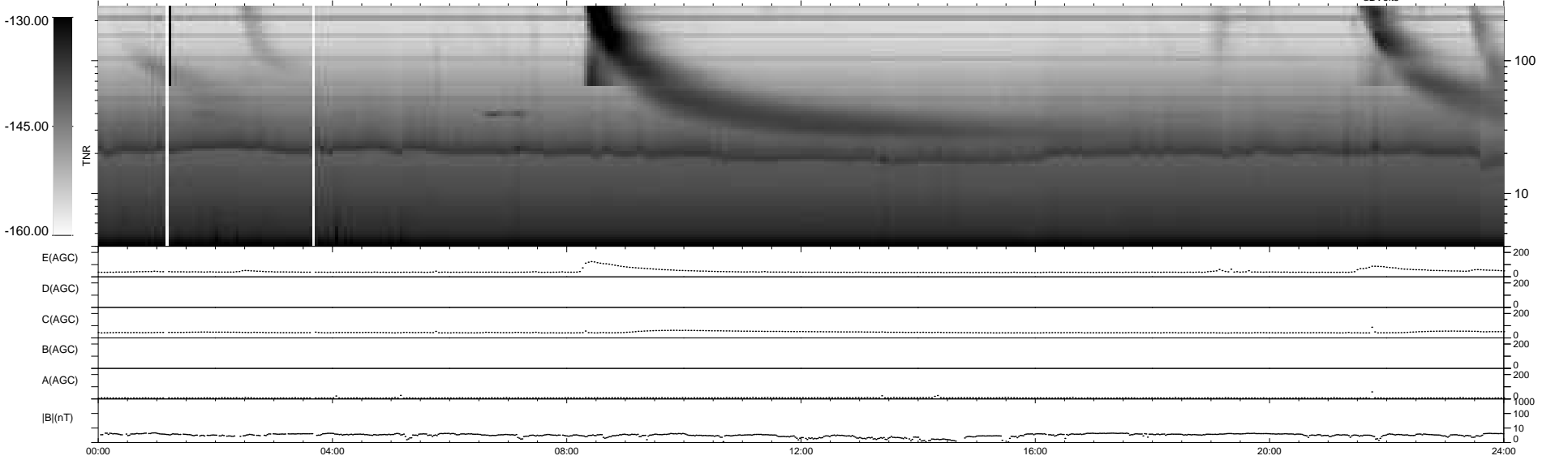
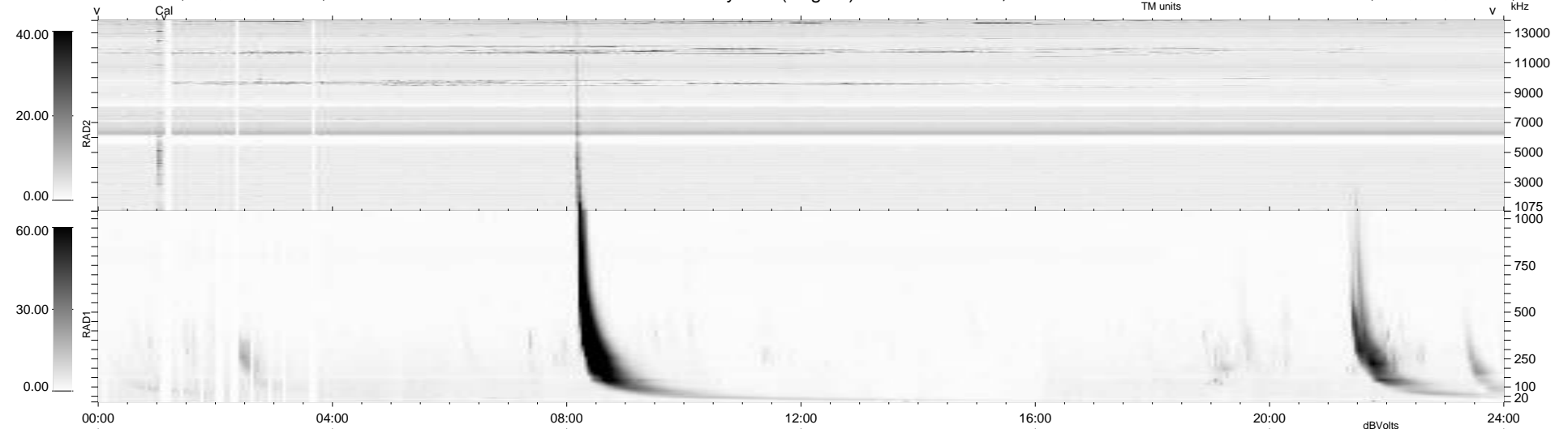
30 bad + 910 good MF/940MF projected (96%) - 0 missing MFs
 Avg interval = 180 secs
 Re = 203.18 (201.83, 16.76, -16.31 GSE)

windlib 2.0b

LZ version = v01

WIND/WAVES Summary Plot (Page 1) for 17-JUL-2014, DOY = 198

DAILY 2014-07-18 18:46:05
 Re = 203.70 (202.03, 20.30, -16.36 GSE)



RAD2
 Antenna Ey
 Mode LIN(1)
 SUM/SEP SEP
 Toggle OFF
 RAD1
 Antenna Ex
 Mode LIS(2,4)
 SUM/SEP SUM
 Toggle OFF
 TNR
 Antenna ExEy
 Mode A-32
 Sweep ACE