

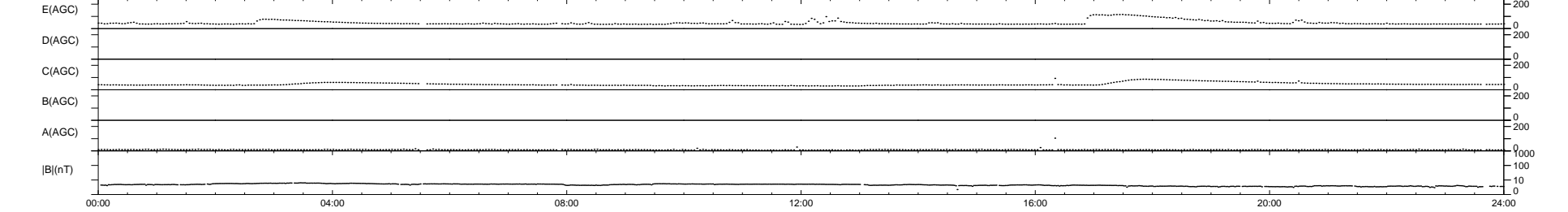
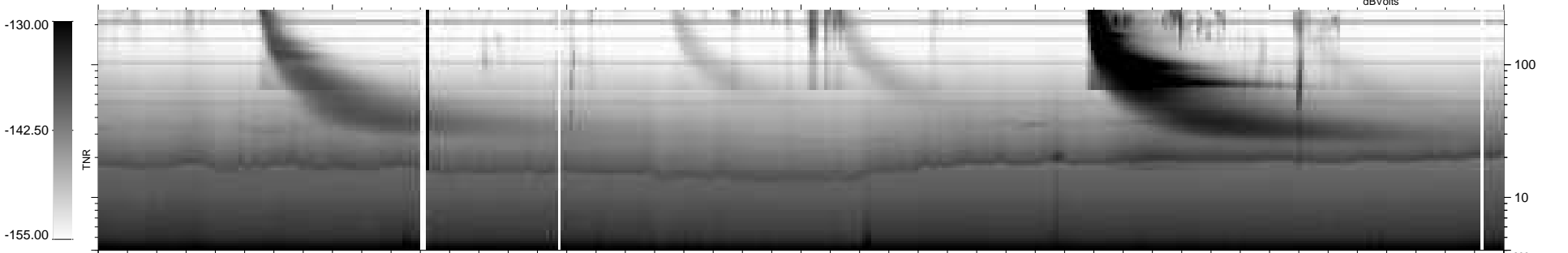
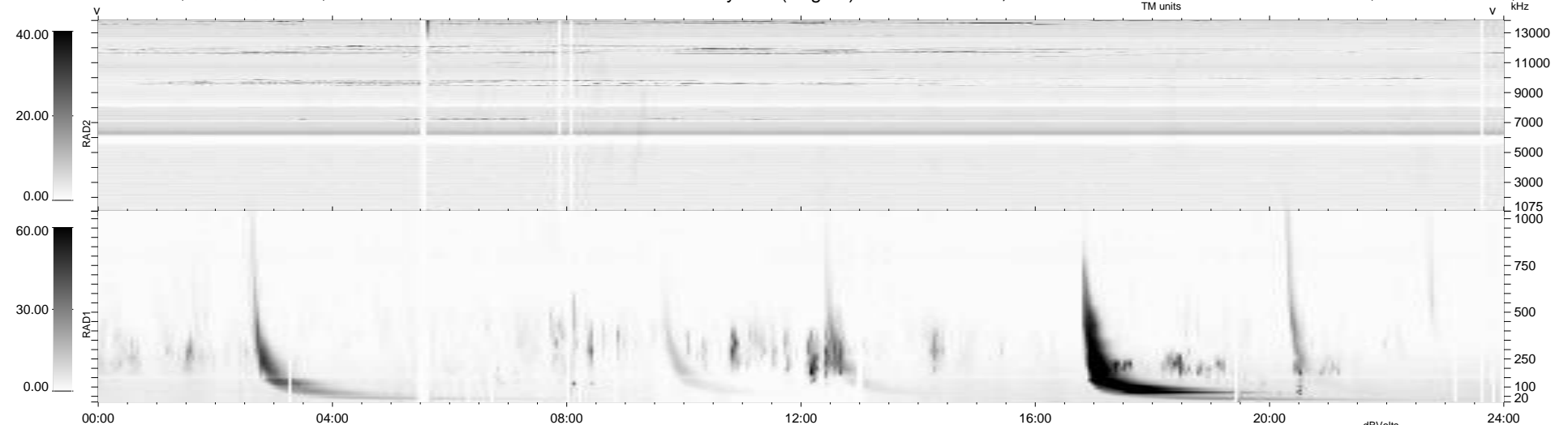
43 bad + 896 good MF/939MF projected (95%) - 0 missing MFs
 Avg interval = 180 secs
 Re = 202.74 (201.65, 13.19, -16.24 GSE)

windlib 2.0b

LZ version = v01

WIND/WAVES Summary Plot (Page 1) for 16-JUL-2014, DOY = 197

DAILY 2014-07-17 23:46:05
 Re = 203.17 (201.83, 16.73, -16.31 GSE)



RAD2
 Antenna Ey
 Mode LIN(1)
 SUM/SEP SEP
 Toggle OFF

RAD1
 Antenna Ex
 Mode LIS(2,4)
 SUM/SEP SUM
 Toggle OFF

TNR
 Antenna ExEy
 Mode A-32
 Sweep ACE