

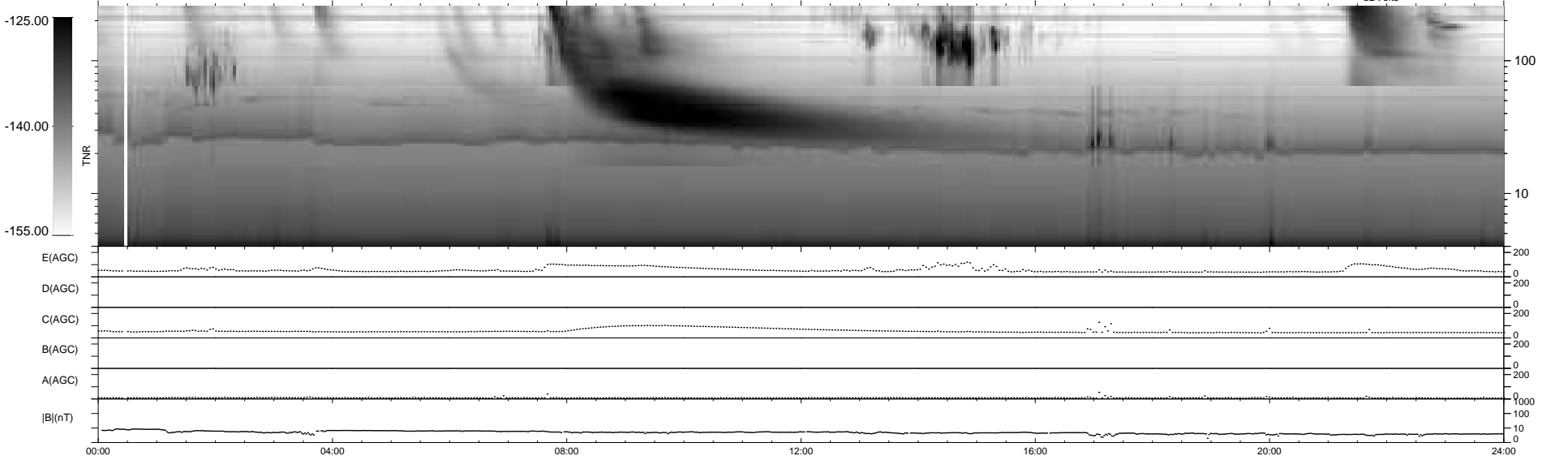
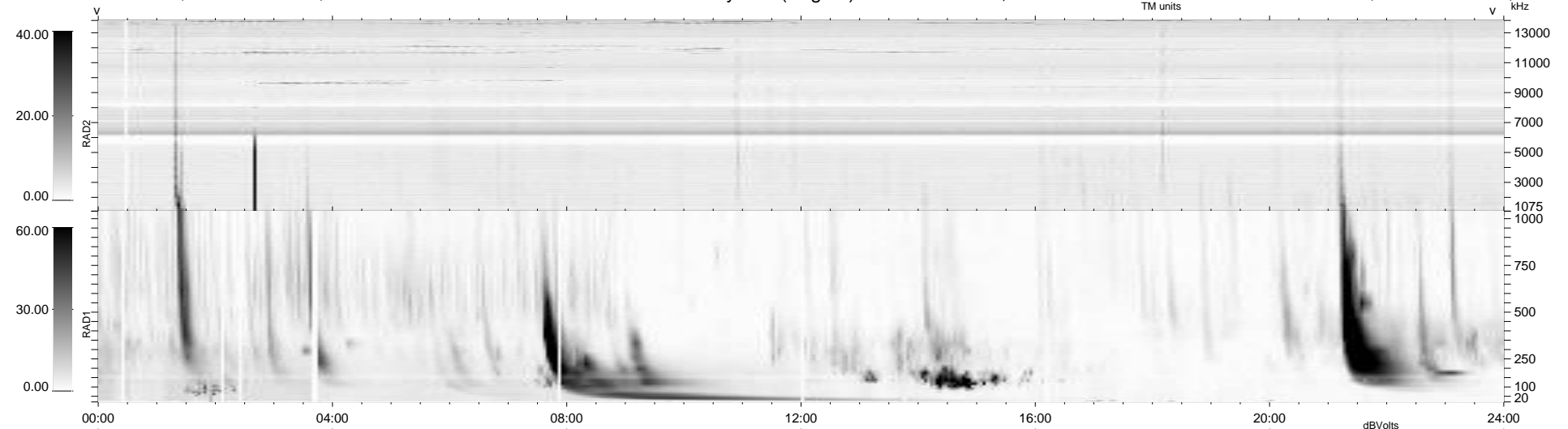
23 bad + 916 good MF/939MF projected (97%) - 0 missing MFs
 Avg interval = 180 secs
 Re = 202.29 (201.55, -8.09, -15.28 GSE)

windlib 2.0b

LZ version = v01

WIND/WAVES Summary Plot (Page 1) for 10-JUL-2014, DOY = 191

DAILY 2014-07-11 15:46:04
 Re = 202.09 (201.45, -4.56, -15.50 GSE)



RAD2
 Antenna Ey
 Mode LIN(1)
 SUM/SEP SEP
 Toggle OFF
 RAD1
 Antenna Ex
 Mode LIS(2,4)
 SUM/SEP SUM
 Toggle OFF
 TNR
 Antenna ExEy
 Mode A-32
 Sweep ACE