

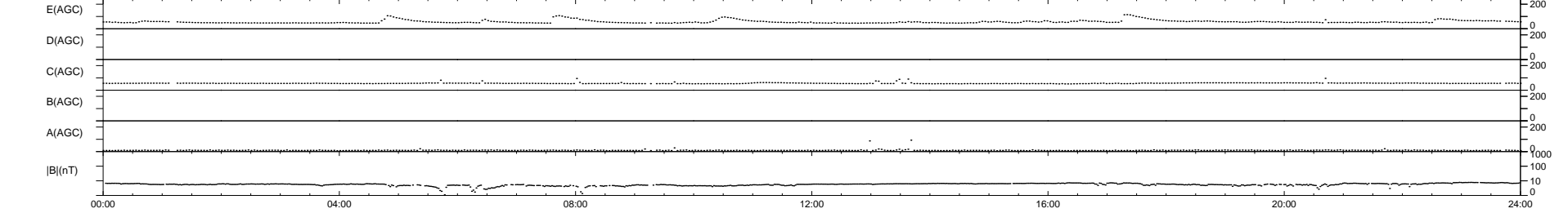
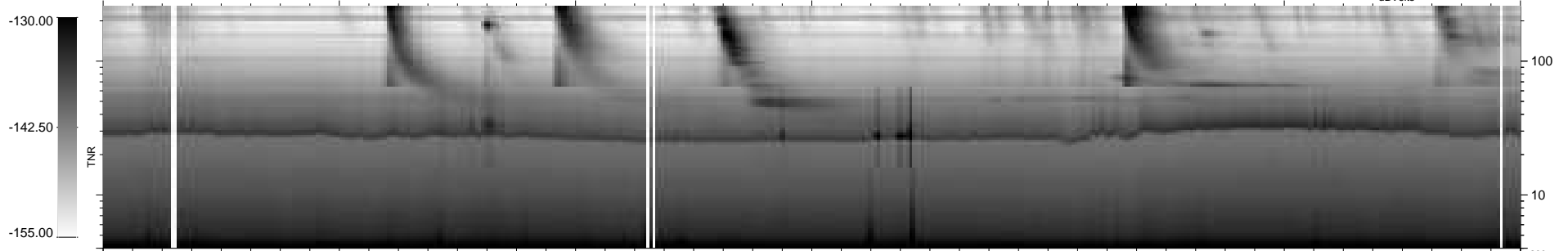
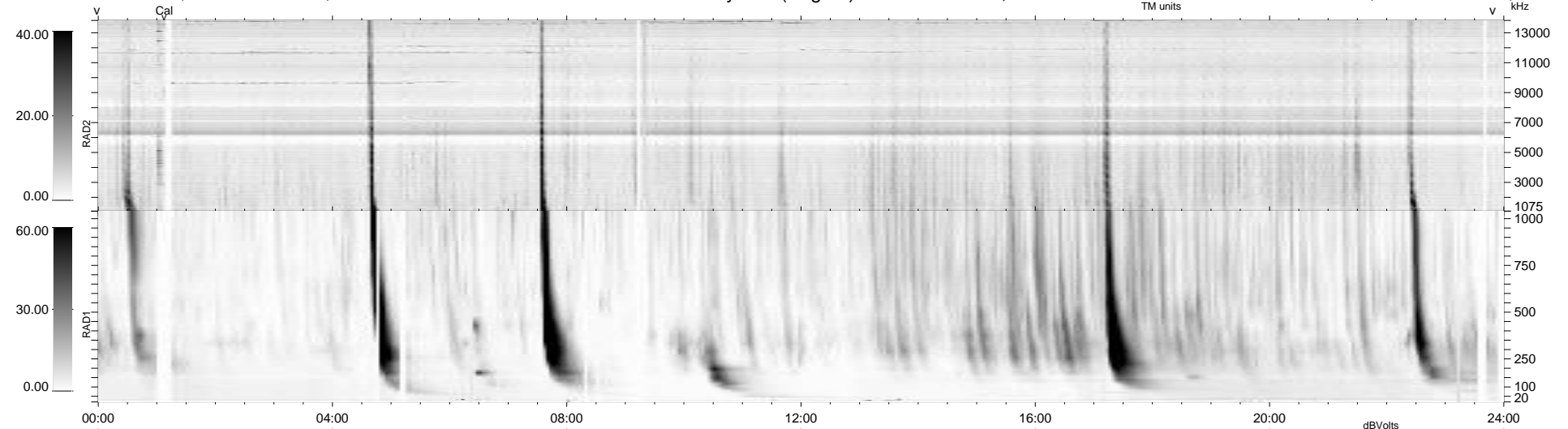
47 bad + 893 good MF/940MF projected (95%) - 0 missing MFs  
 Avg interval = 180 secs  
 Re = 202.59 (201.70, -11.64, -15.04 GSE)

windlib 2.0b

LZ version = v01

### WIND/WAVES Summary Plot (Page 1) for 09-JUL-2014, DOY = 190

DAILY 2014-07-10 23:46:04  
 Re = 202.29 (201.55, -8.11, -15.28 GSE)



RAD2  
 Antenna Ey  
 Mode LIN(1)  
 SUM/SEP SEP  
 Toggle OFF

RAD1  
 Antenna Ex  
 Mode LIS(2,4)  
 SUM/SEP SUM  
 Toggle OFF

TNR  
 Antenna ExEy  
 Mode A-32  
 Sweep ACE