

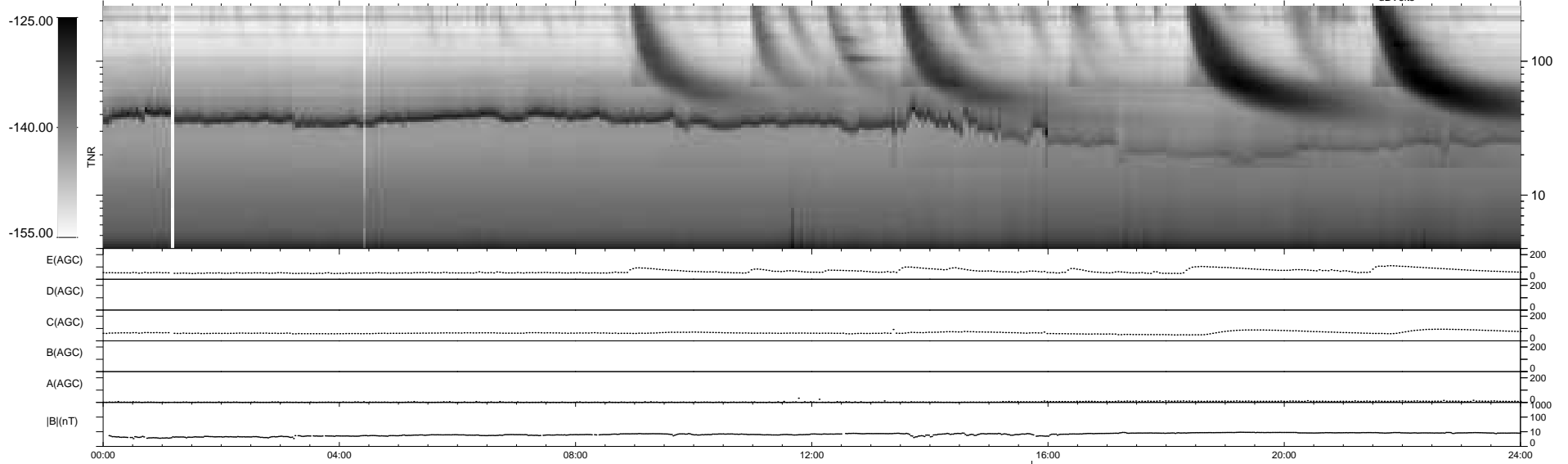
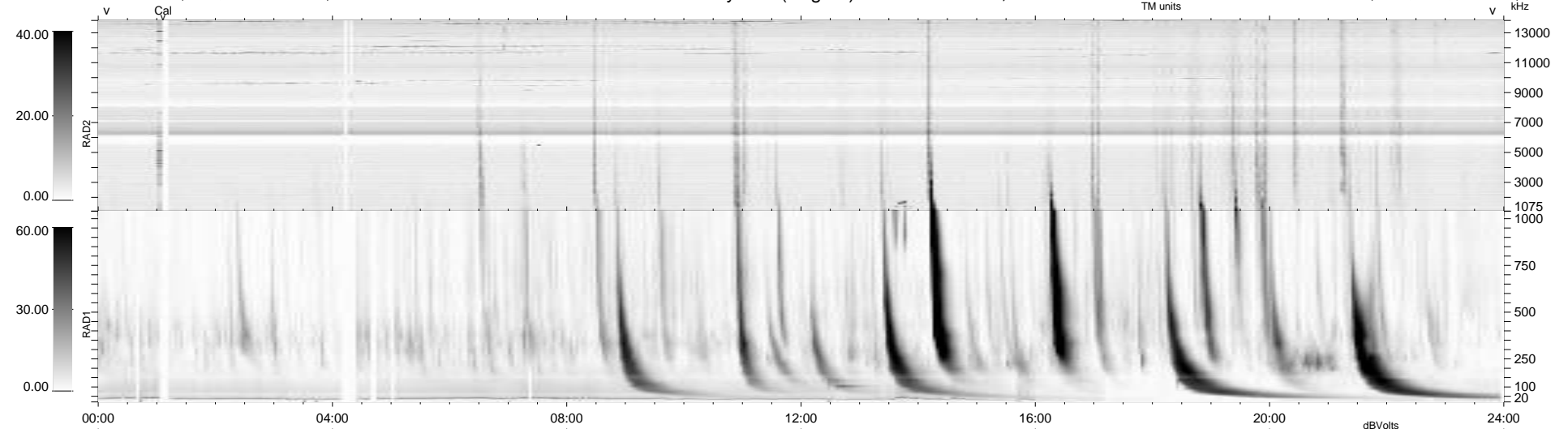
28 bad + 910 good MF/939MF projected (96%) - 1 missing MF
 Avg interval = 180 secs
 Re = 203.47 (202.09, -18.76, -14.49 GSE)

windlib 2.0b

LZ version = v01

WIND/WAVES Summary Plot (Page 1) for 07-JUL-2014, DOY = 188

DAILY 2014-07-09 10:46:05
 Re = 202.99 (201.88, -15.23, -14.77 GSE)



RAD2
 Antenna Ey
 Mode LIN(1)
 SUM/SEP SEP
 Toggle OFF
 RAD1
 Antenna Ex
 Mode LIS(2,4)
 SUM/SEP SUM
 Toggle OFF
 TNR
 Antenna ExEy
 Mode A-32
 Sweep ACE