

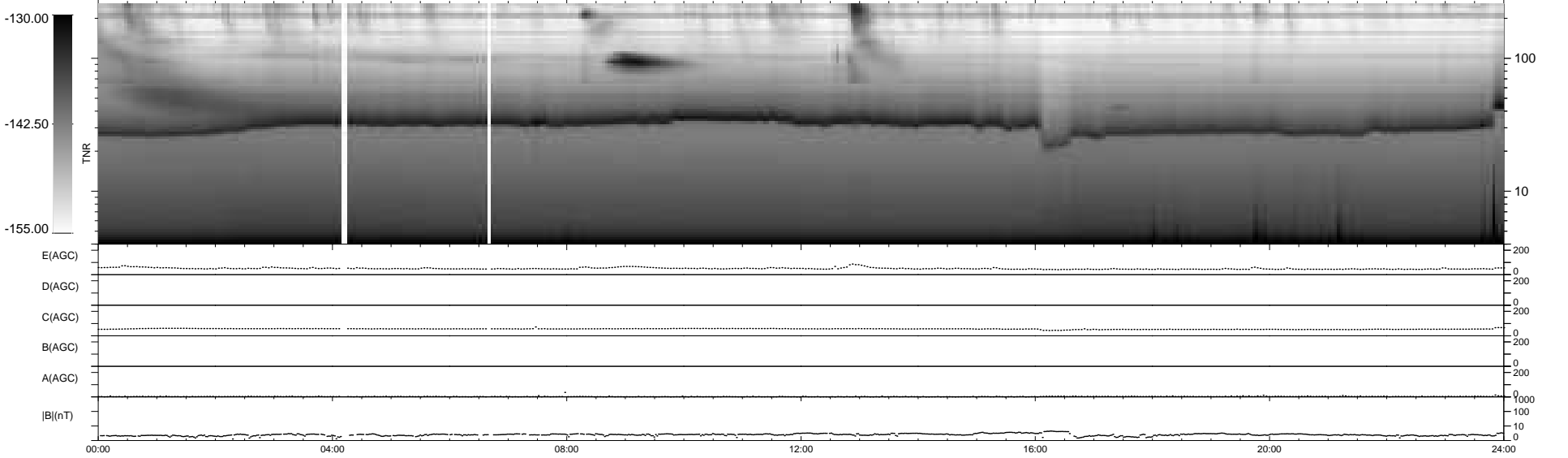
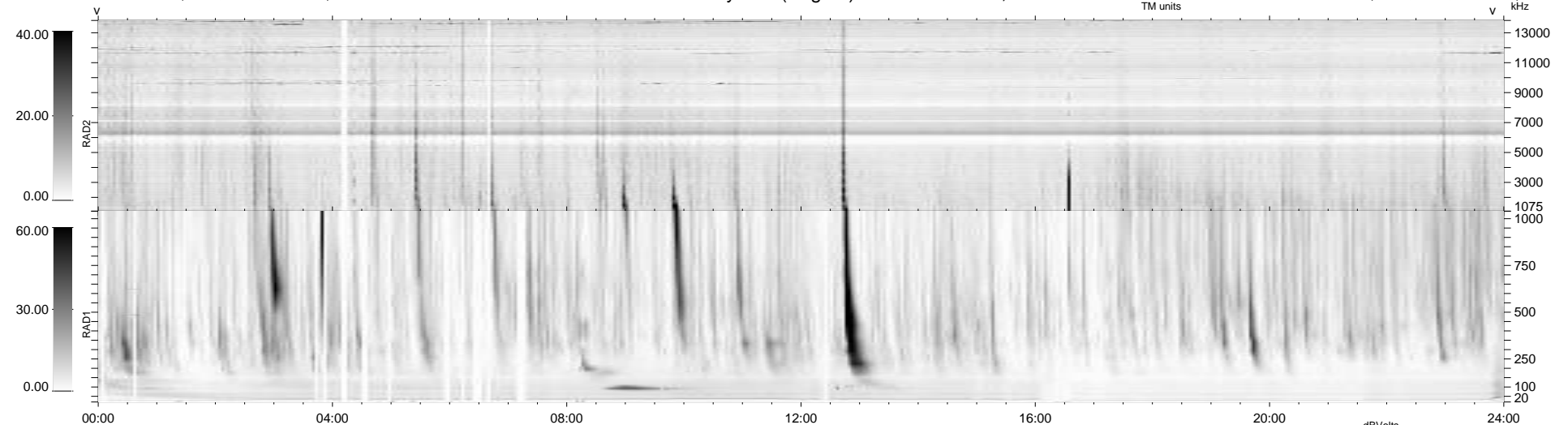
34 bad + 906 good MF/940MF projected (96%) - 0 missing MFs
 Avg interval = 180 secs
 Re = 207.06 (203.41, -36.56, -12.70 GSE)

windlib 2.0b

LZ version = v01

WIND/WAVES Summary Plot (Page 1) for 02-JUL-2014, DOY = 183

DAILY 2014-07-03 20:46:04
 Re = 206.22 (203.13, -33.06, -13.10 GSE)



RAD2
 Antenna Ey
 Mode LIN(1)
 SUM/SEP SEP
 Toggle OFF

RAD1
 Antenna Ex
 Mode LIS(2,4)
 SUM/SEP SUM
 Toggle OFF

TNR
 Antenna ExEy
 Mode A-32
 Sweep ACE