

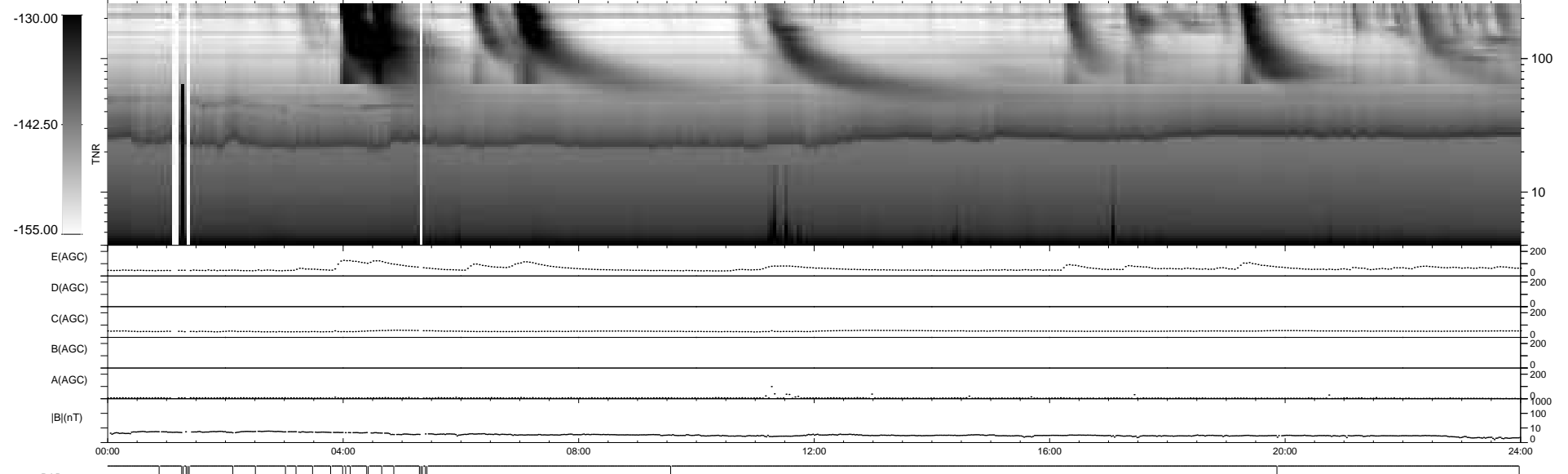
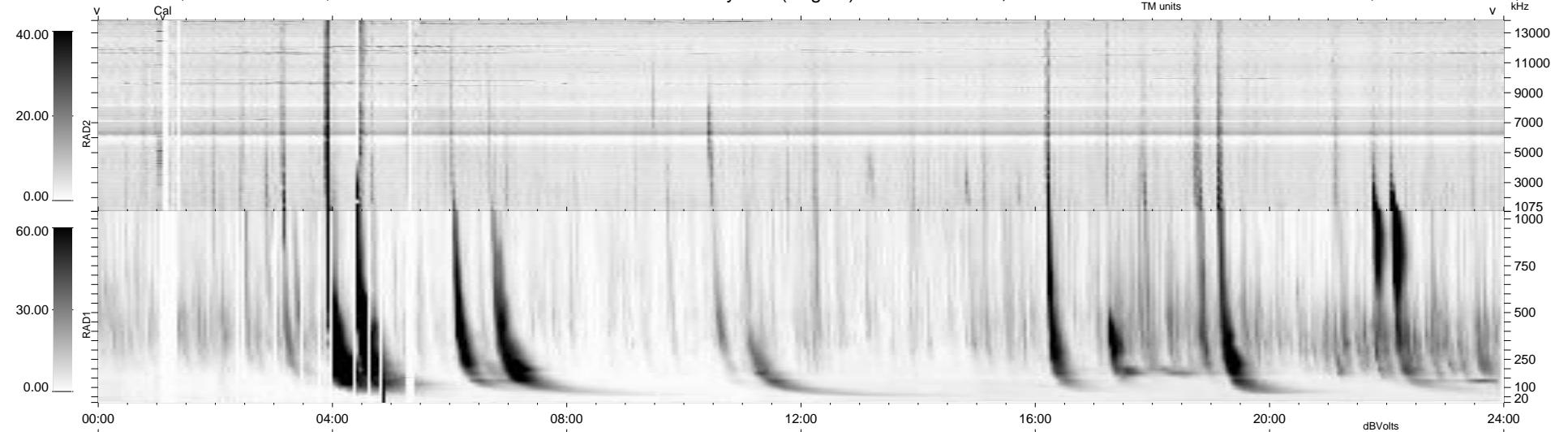
27 bad + 912 good MF/939MF projected (97%) - 0 missing MFs  
 Avg interval = 180 secs  
 Re = 207.96 (203.69, -40.04, -12.27 GSE)

windlib 2.0b

LZ version = v01

### WIND/WAVES Summary Plot (Page 1) for 01-JUL-2014, DOY = 182

DAILY 2014-07-03 02:46:04  
 Re = 207.07 (203.41, -36.58, -12.70 GSE)



```

RAD2
Antenna Ey
Mode LIN(1)
SUM/SEP SEP
Toggle OFF

RAD1
Antenna Ex
Mode LIS(2,4)
SUM/SEP SUM
Toggle OFF

TNR
Antenna ExEy
Mode A-32
Sweep ACE
  
```